

for the most part steep, though there were also two or three places in which it formed level expansions with soft ground, where grass and bushes were growing. The dry wood of the last-named was extraordinarily plentiful all the way and consisted sometimes of logs of massive proportions. So far as we were able to see, the

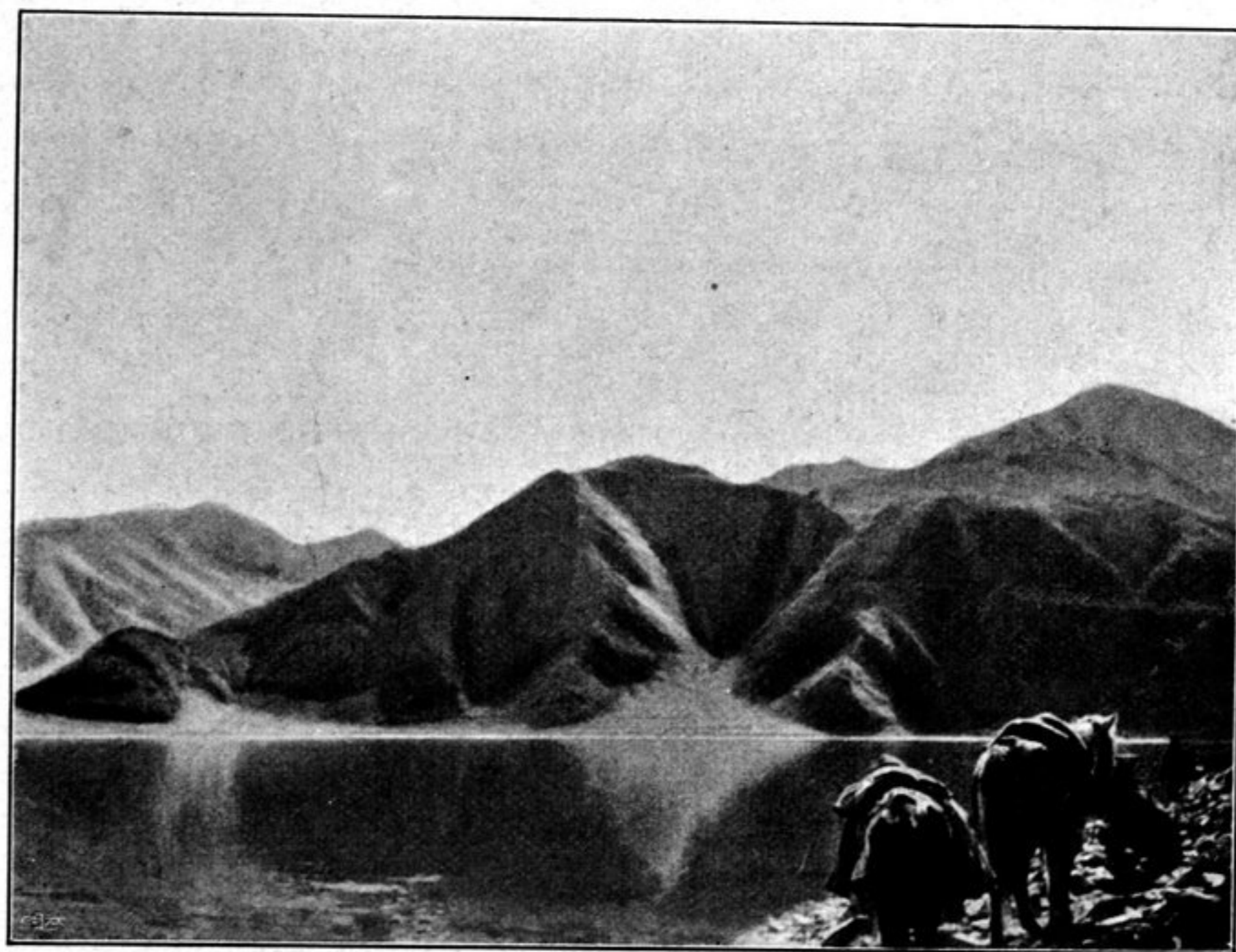
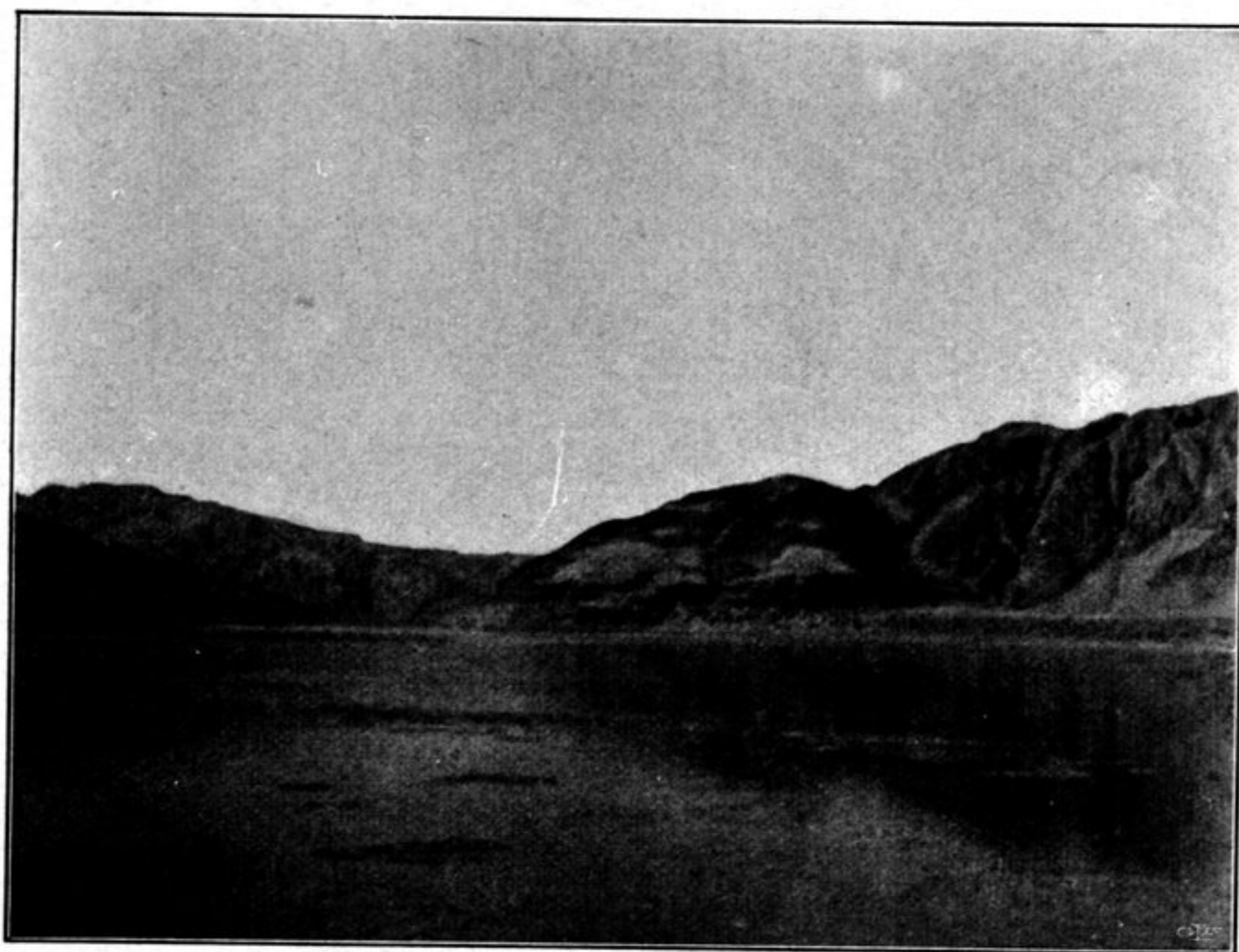


Fig. 199. FROZEN PARTS OF THE TSO-NGOMBO.

southern shore was at this part broader than the opposite northern shore, and bore a larger number of bushes; the reason of this may be in part that they are less interfered with by passing caravans, which keep to the north side. The lake still continued to be very narrow, the breadth being little more than a kilometer. It was