

In the western part of the bay, which was protected against the wind and the waves, the ice was thick and strong; but outside the cape on the west side of the bay there was open water all the way to the point at which the river issues from the Tso-ngombo. But some Tibetans whom we met told us, that even this

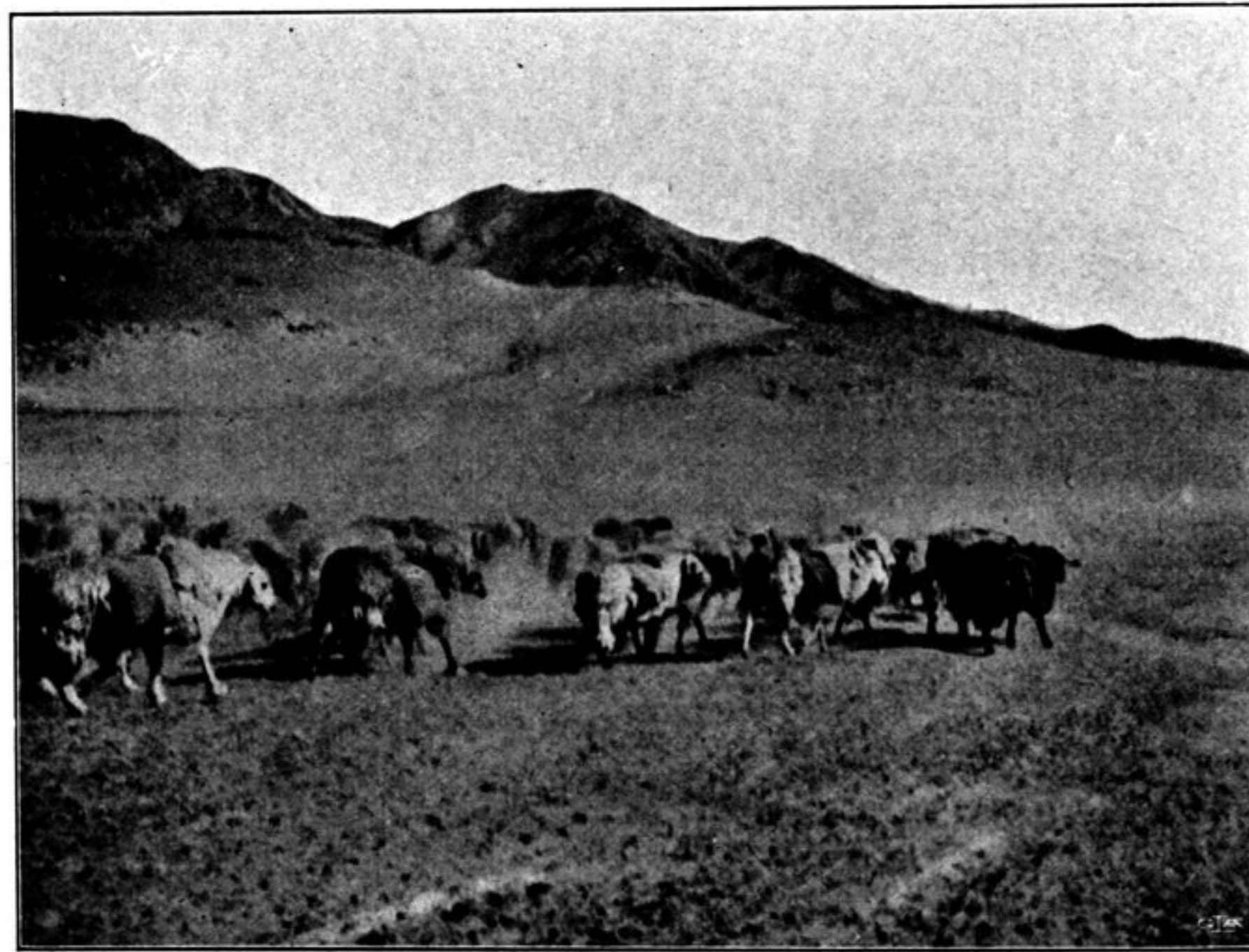
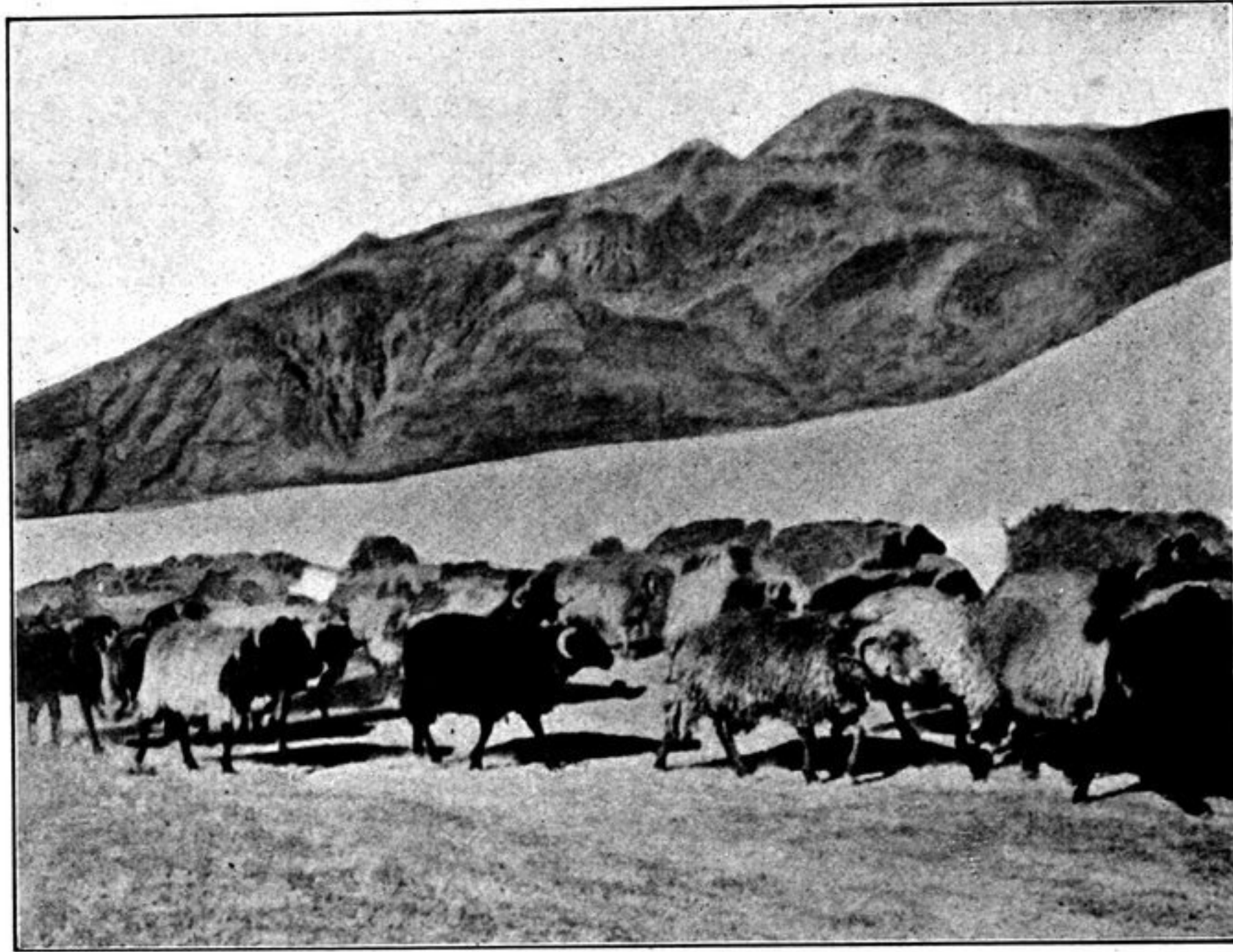


Fig. 207. A SHEEP-CARAVAN ON THE SHORE OF TSO-NGOMBO.

part of the lake had been covered with a thin sheet of ice the day before, though nothing like strong enough to withstand the hard wind which was then blowing. And their statement was rendered probable by our seeing bands of broken ice on the shores and capes, showing how the wind had blown it from the west. In one