

or two places we were witnesses of how the drifting ice, under the impulse of the wind, ploughed up the soft material of the beach, an illustration of the way in which the strand-ramparts are formed which I have described above. As I thus travelled

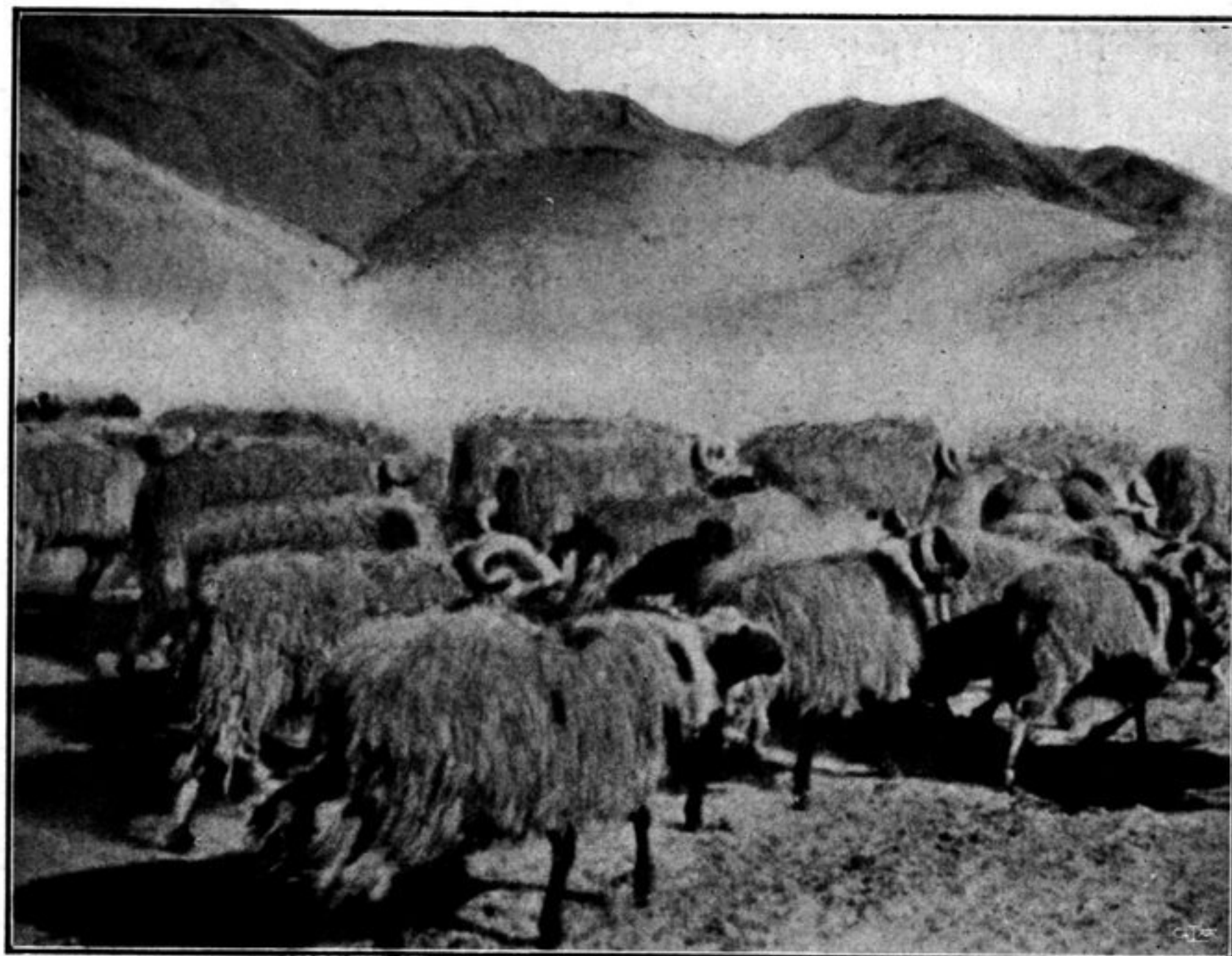


Fig. 208. A SHEEP-CARAVAN ON THE SHORE OF TSO-NGOMBO.



Fig. 209. AT THE WESTERN END OF TSO-NGOMBO.

alongside the Tso-ngombo just during the days when it was freezing over, I had an opportunity to observe how the formation of the ice advanced from east to west; or in other words, how the easternmost basin froze first, then those successively that followed next after it, yet in such wise that the narrow and sheltered parts of