

ning of December the Tso-ngombo discharges 3 cub.m. into the Panggong-tso; this lake probably does not freeze, at least not the whole of it. Consequently the evaporation from the latter lake is more active in winter than it is from the former. This causes a difference of level, and that again intensifies the erosive energy of the river.

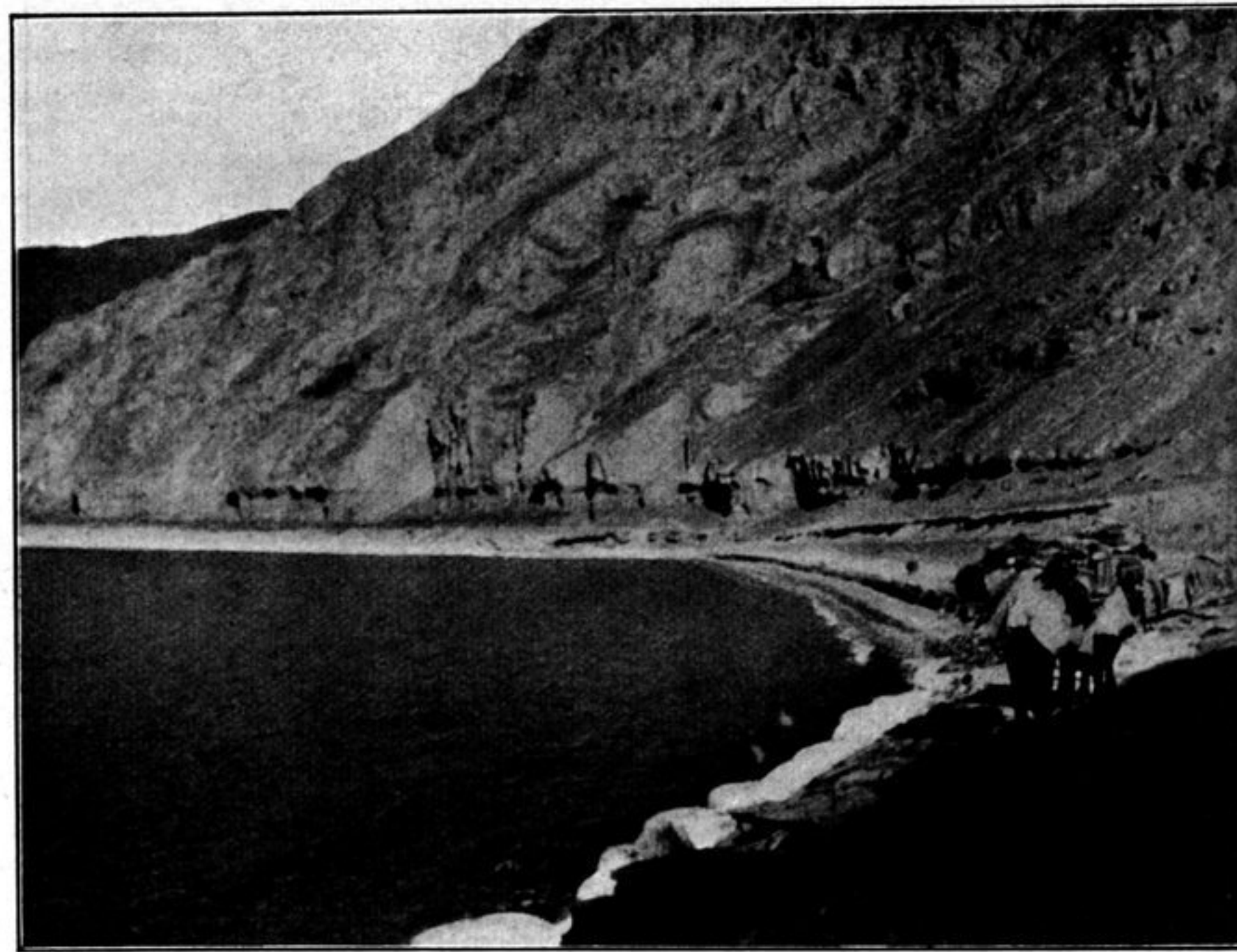
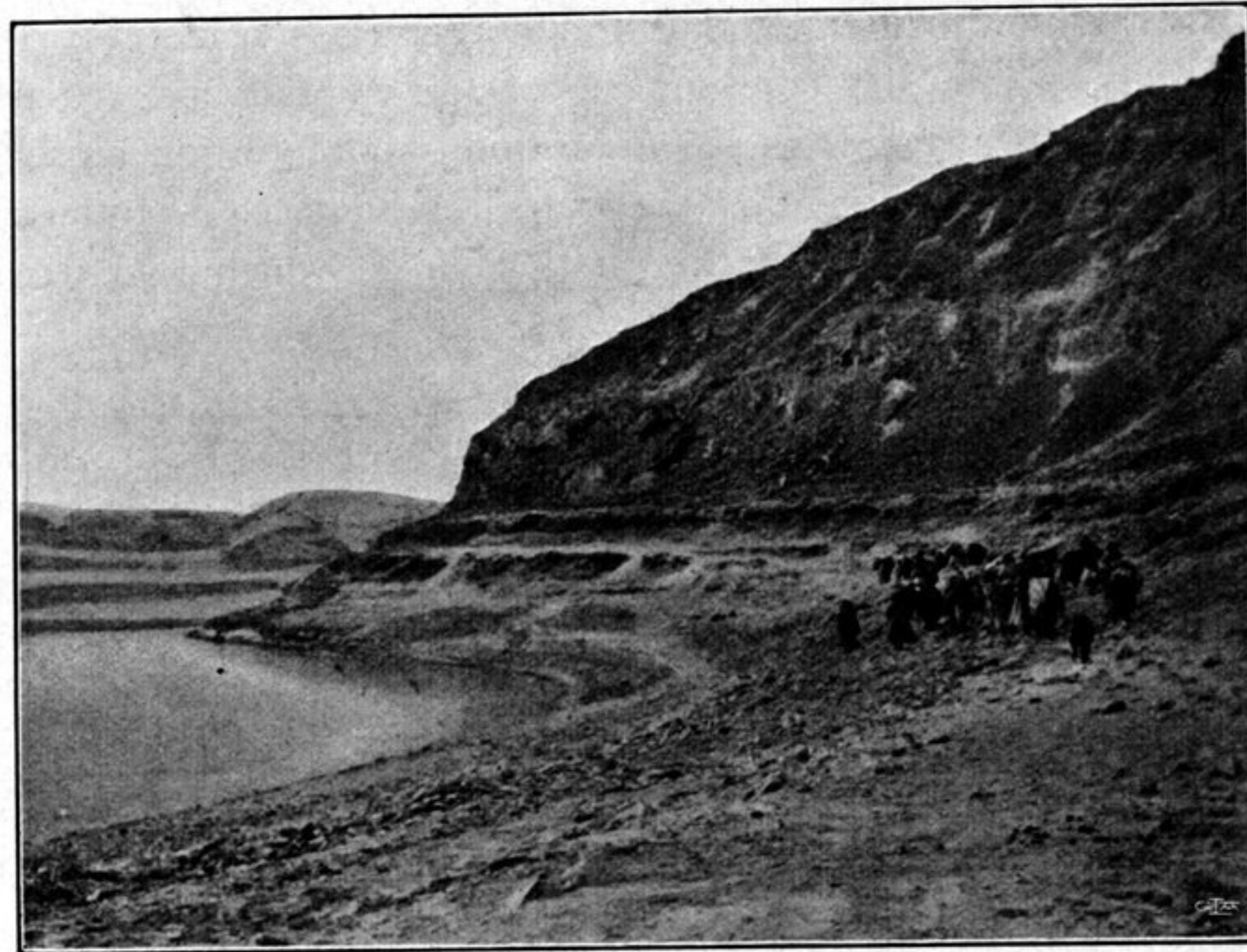


Fig. 213. TERRACES ON THE SHORE OF TSO-NGOMBO.

There is a constant inflow into the upper lake, but the water is passed on to the lower, the Panggong-tso. There is nothing to show that the two lakes, say in consequence of the contribution from the Tso-ngombo being at any season arrested, ever happen to lie at the same level, or that there can be a retrogressive current from