

this arises when the waves beat against the stones, chilled as they are during the night (figs. 226 and 227). Wherever the shore is flat and forms bays, it is often bordered with a narrow fringe of ice lying on the dry ground, and presenting in profile the appearance shown in fig. 228. Its edge is as a rule 19.5 cm. high and is abruptly

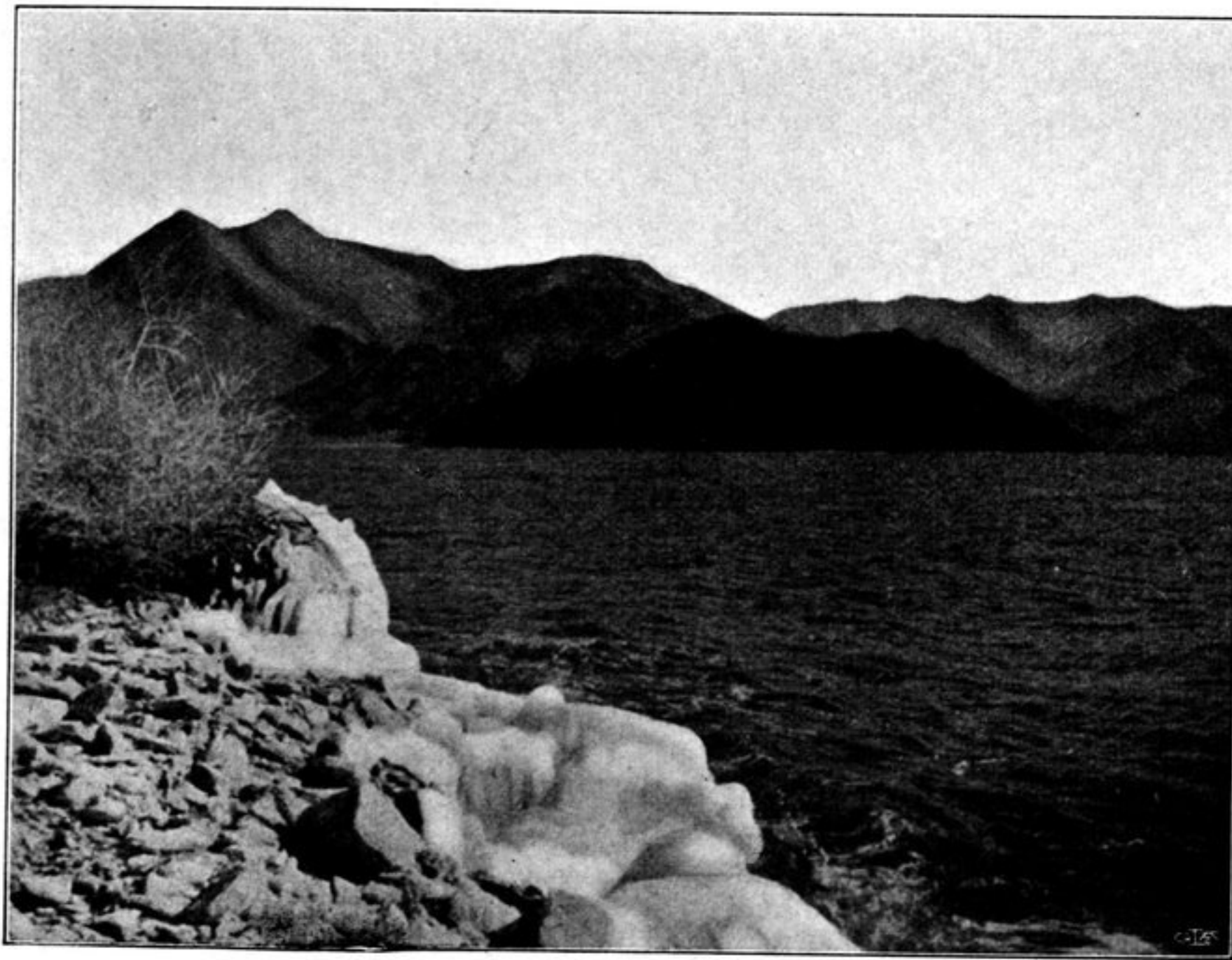
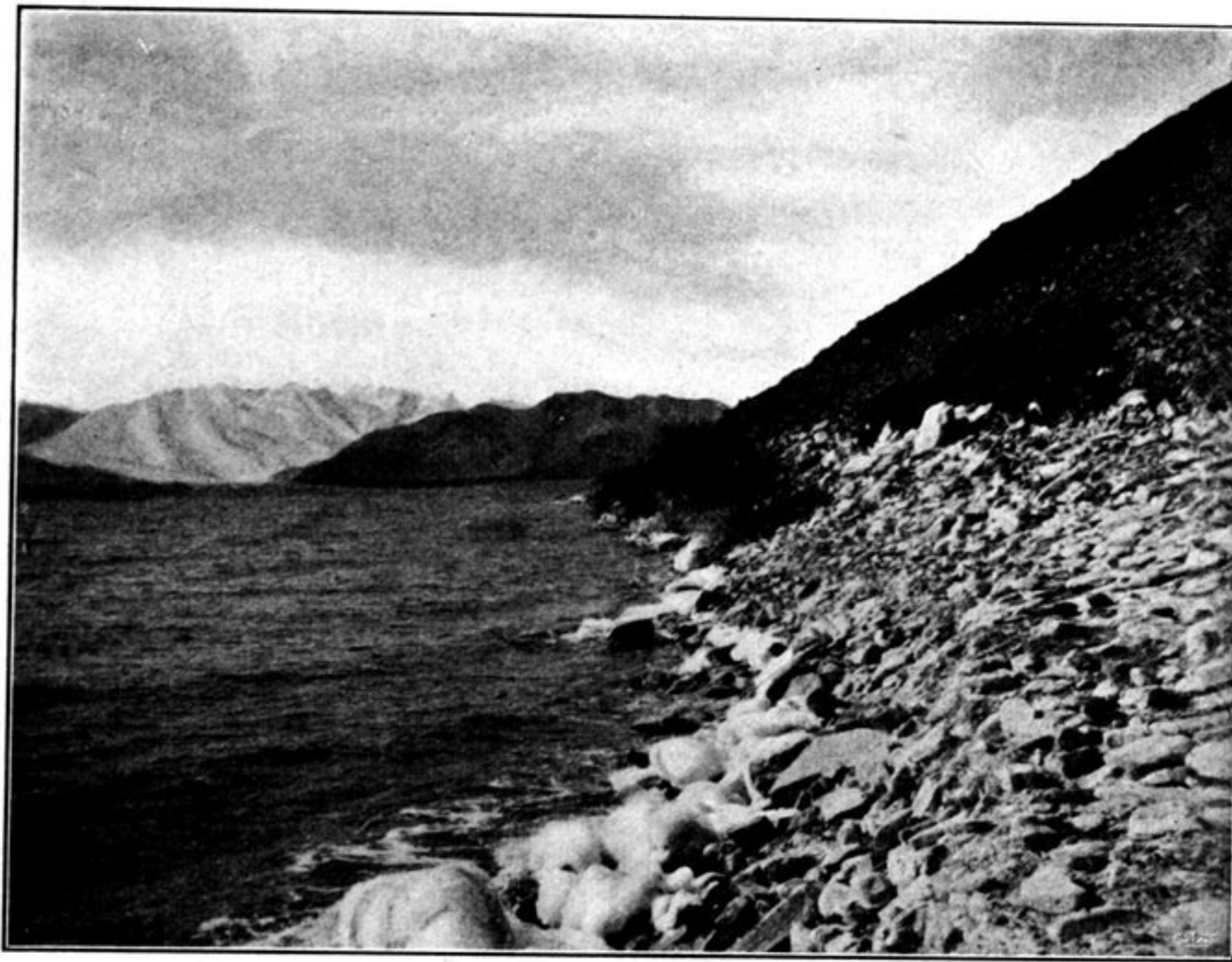


Fig. 226.

broken off. It would however be rash to conclude from this, that the lake had dropped to the extent indicated since the narrow strip of ice froze; it is more probable that this ribbon of ice originated as a consequence of the beat of the waves. Nevertheless the diminishing inflow from the Tso-ngombo in autumn and winter will of course