



Fig. 242. A TYPICAL BAY OF THE NORTHERN SHORE OF PANGGONG-TSO.

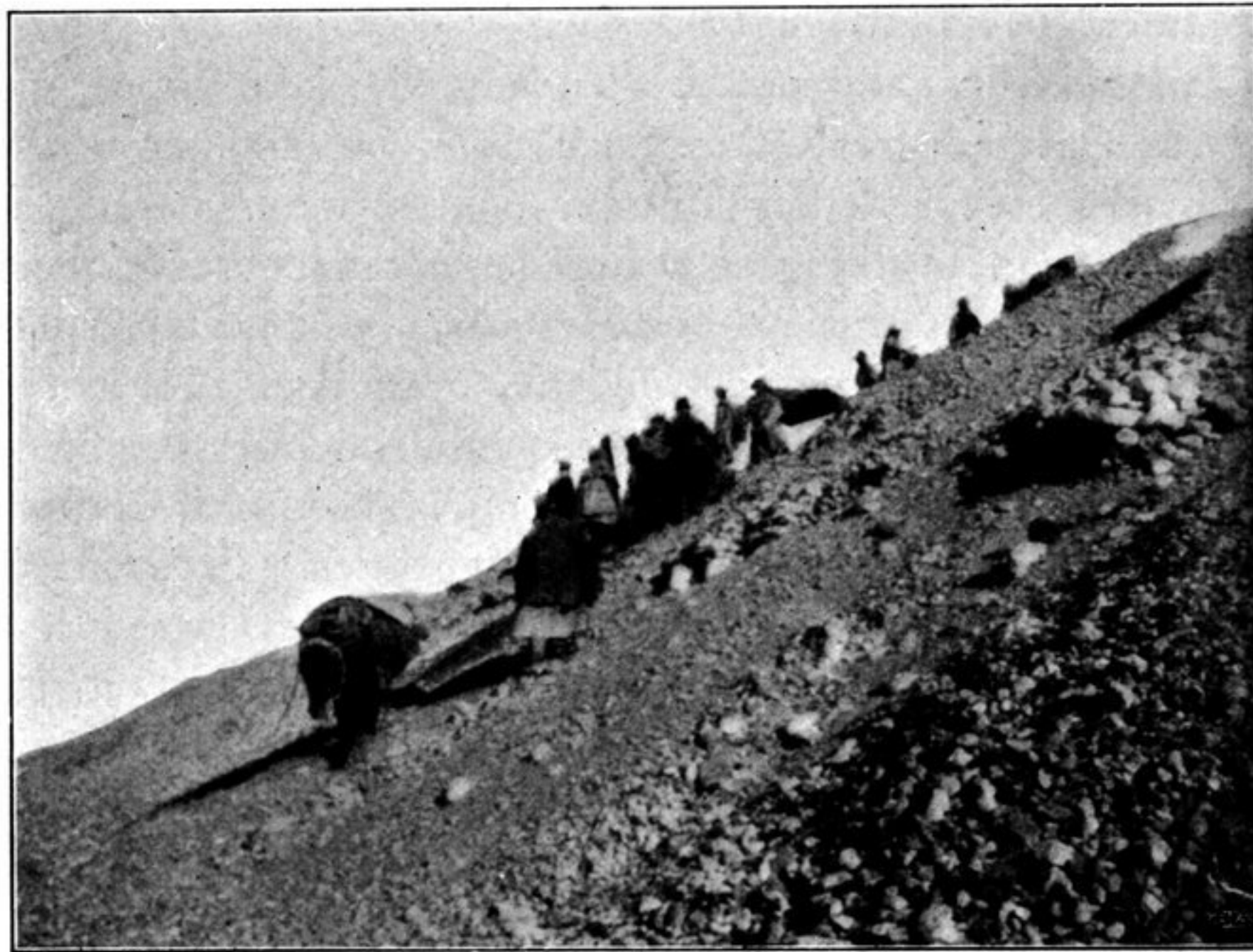


Fig. 243. UP TO THE DIFFICULT PASS.

The track then skirted first the promontory next the camp, and next a smaller similar promontory which separates two little bays from one another. After that came a large cape like that which I have described in our preceding day's journey, and north-west of it followed a more deeply penetrating bay. This last is bordered on the west by a large, compact mountain spur, which does not allow of any passage round it at the bottom. The Tibetans had warned us of this place and predicted that it would be practically impossible for us to get our camels over it. After