

Fig. 251. CAMP CXLVIII. IN THE FOREGROUND THE TERRACE FROM WHICH THE STREAM ISSUES.

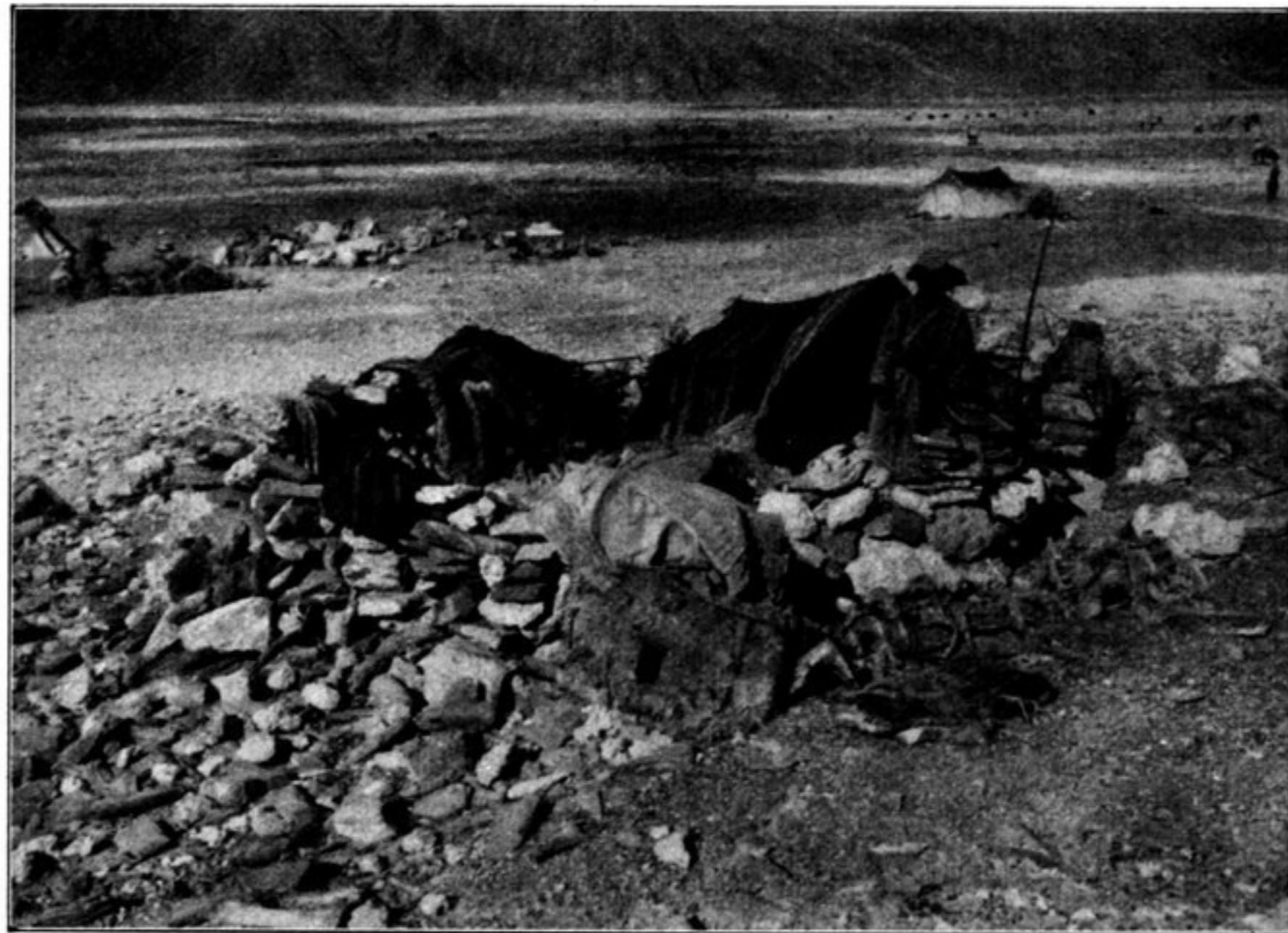


Fig. 252. CAMP CXLVIII. TENTS OF THE LADAKIS.

just make out what we guessed to be occasional short glacier arms. Directly opposite to us, or S. 43° W., were the village and fields of Man, and beside a glen traversed by a spring-fed stream were houses and steadings in several places.

Quite near to our camp and close to the lake-side a copious spring gushed out. With the temperature of the air at -6.0° at 1 p.m., the temperature of the water in the bay was $+6.1^{\circ}$, the difference being attributable to the spring just mentioned; for the temperature of the spring-water was $+16.2^{\circ}$, so that the water was tepid. It was as bright as crystal and perfectly fresh, and issued in a continuous