

little likely that they have taken any note of the changes which may have occurred. Here again ramparts and rings of white salt indicate that the lake formerly reached a higher level.

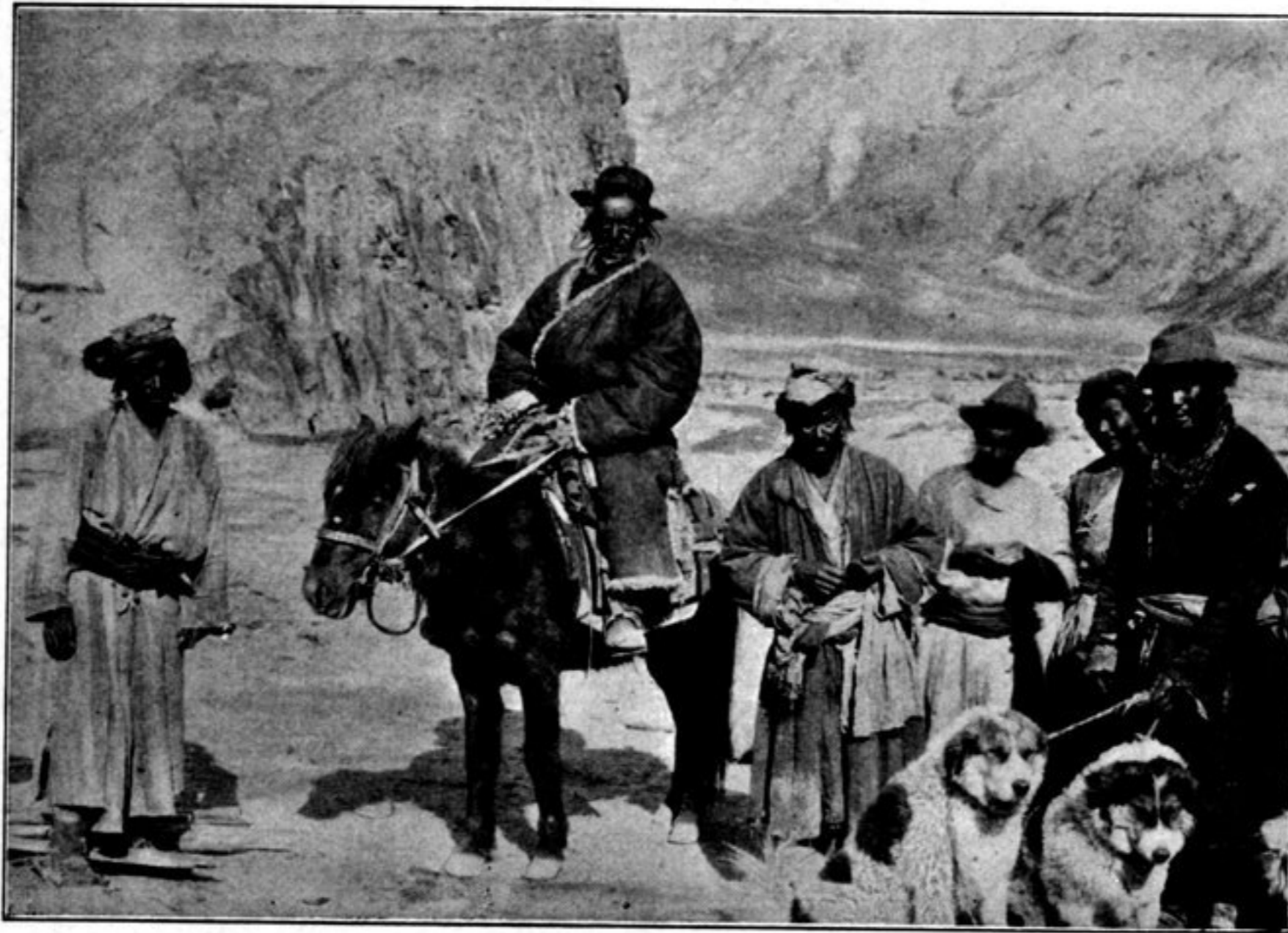


Fig. 259. SOME GROUPS OF THE LADAK RELIEF EXPEDITION.

The bay is long and narrow, and picturesque, and penetrates inland a distance equal to the breadth of the entire Panggong-tso; in fact it resembles a fjord clasped about by vast mountain-spurs. On the southern shore is the village of Pangmik with three steadings. The day was genial and still; but in the afternoon the sky was covered with dense clouds and some snow fell. It was a long time since we had witnessed the fall of snow; but in this respect that winter was said to be quite exceptional.

*Hedin, Journey in Central Asia. IV.*