

saw gaping wide in the south-west. This lake does not end like its eastern neighbour in a point, but in two bays of the same size, separated from one another by a gentle outswelling of the shore-line. The surface features in the north-western

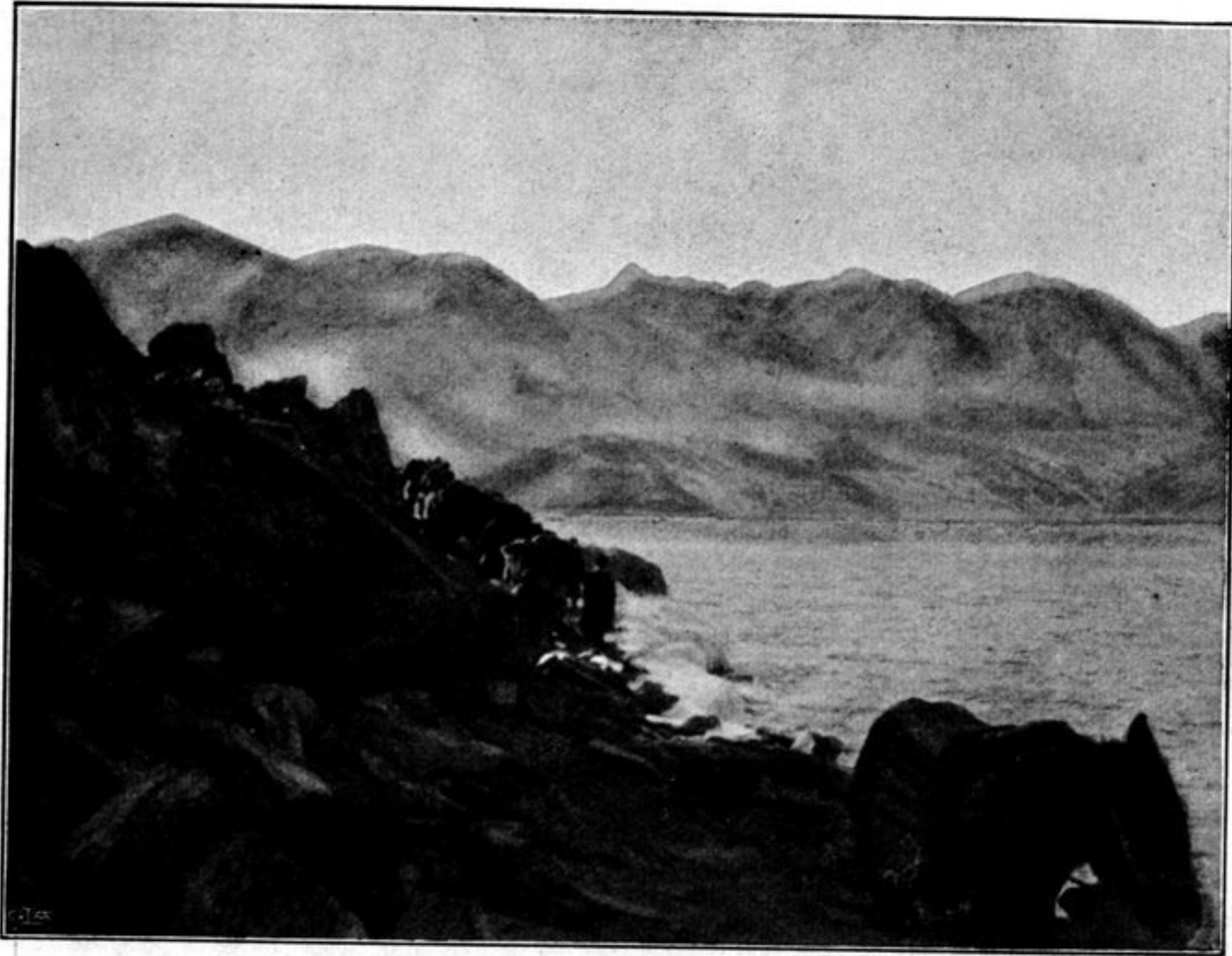


Fig. 261. WESTERN PANGGONG-TSO.

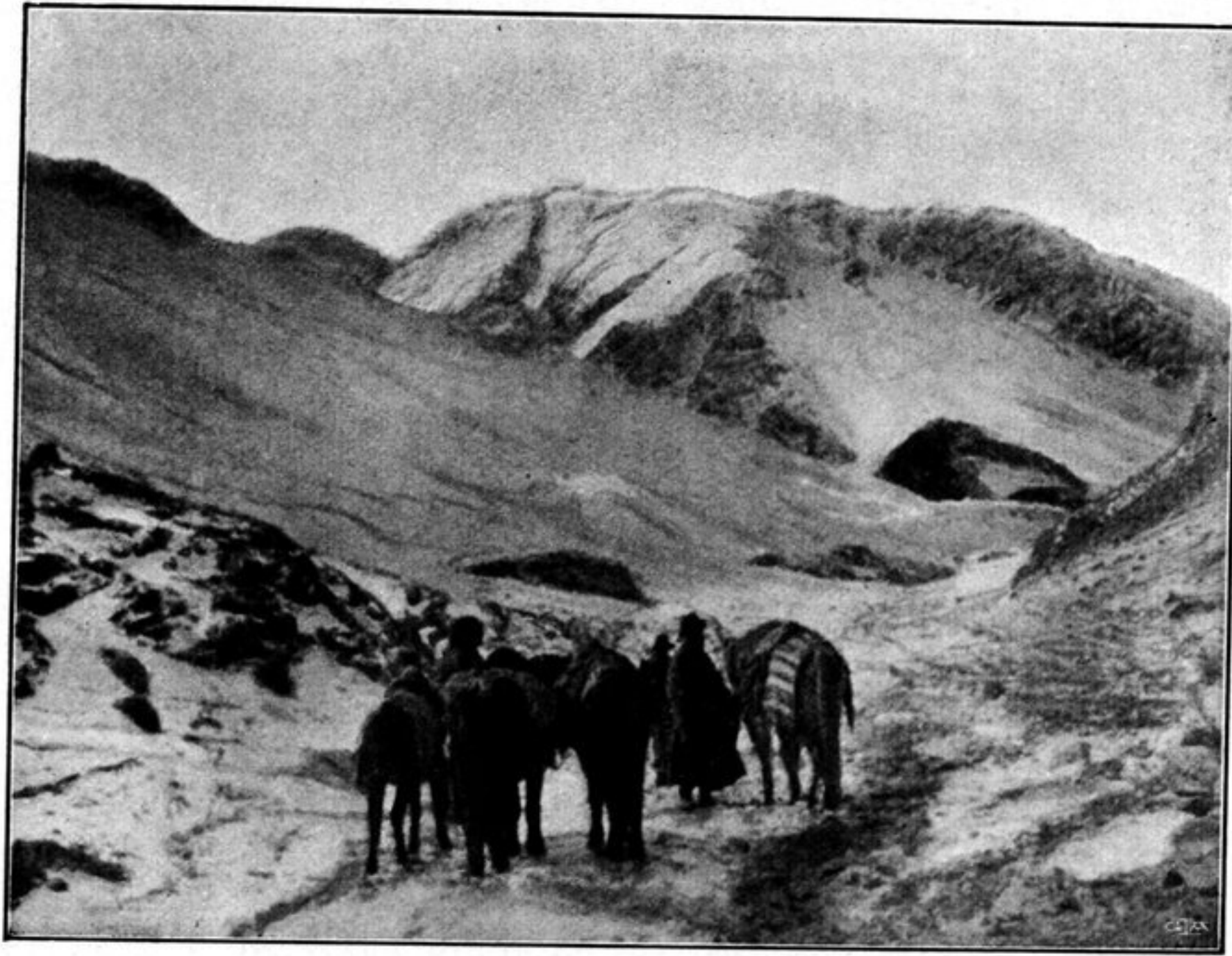


Fig. 262. ON THE ROAD TO THE PASS WEST OF SERTSE.

continuation of the great water-filled latitudinal valley are however very different from those of its eastward continuation. In the latter direction we found the country relatively open, there being two broad, flat valleys, which may be regarded as the continuation of the lacustrine valley. Westwards however, while two glens again