

Fig. 263. VIEWS FROM THE PASS WEST OF SERTSE.

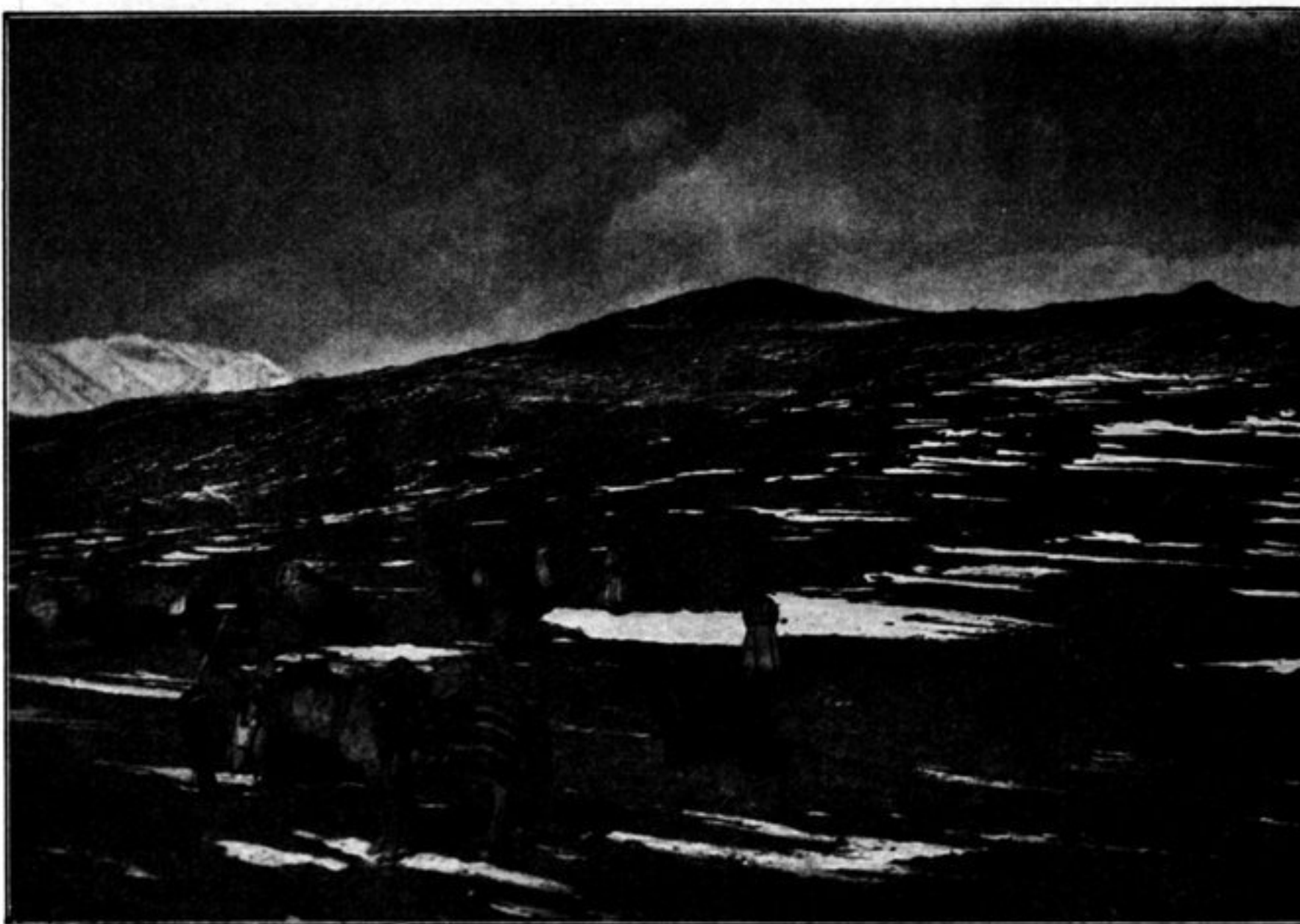


Fig. 264. ON THE PASS OF DECEMBER 16.

debouch upon the lake, one from the north-west, the other from the west-south-west, they are both narrow and deep, and in point of scenery have nothing in common with the big latitudinal valley which contains the Panggong-tso. The level expanse which forms the direct prolongation of this lake is narrow and insignificant, and is bounded on the west by the imposing mountain-mass that separates the two glens one from the other.

This little plain is however of rather a peculiar character, for it very closely resembles a miniature desert. Its surface consists exclusively of soft sand, arranged