

In point of volume the Indus was nearly the reverse of impressive, and I confess I was almost disappointed, having expected to find a vast stream. But then I called to mind the season of the year, the absolute altitude at which we actually

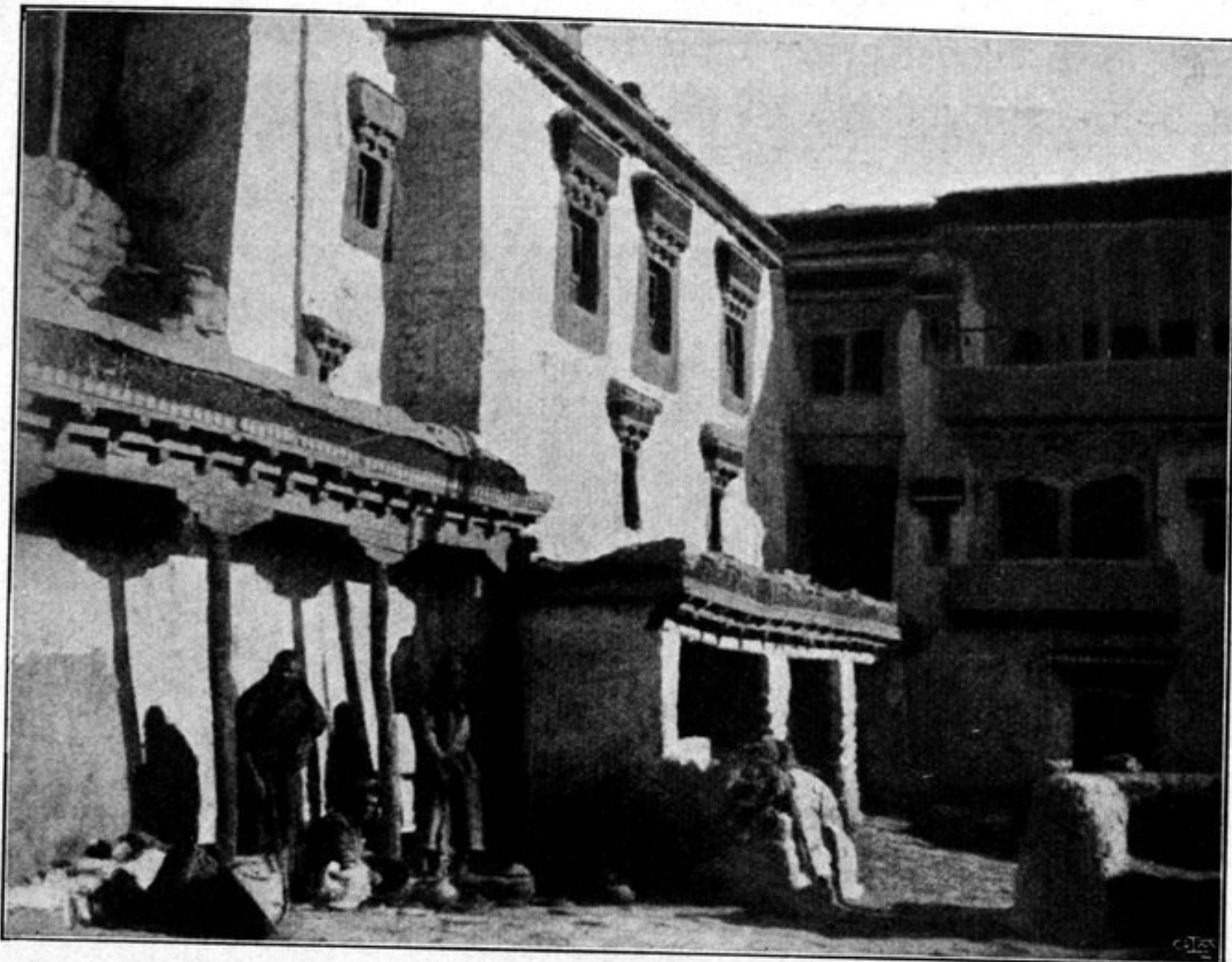


Fig. 279. COURT-YARD OF TIKSE-GOMPA.

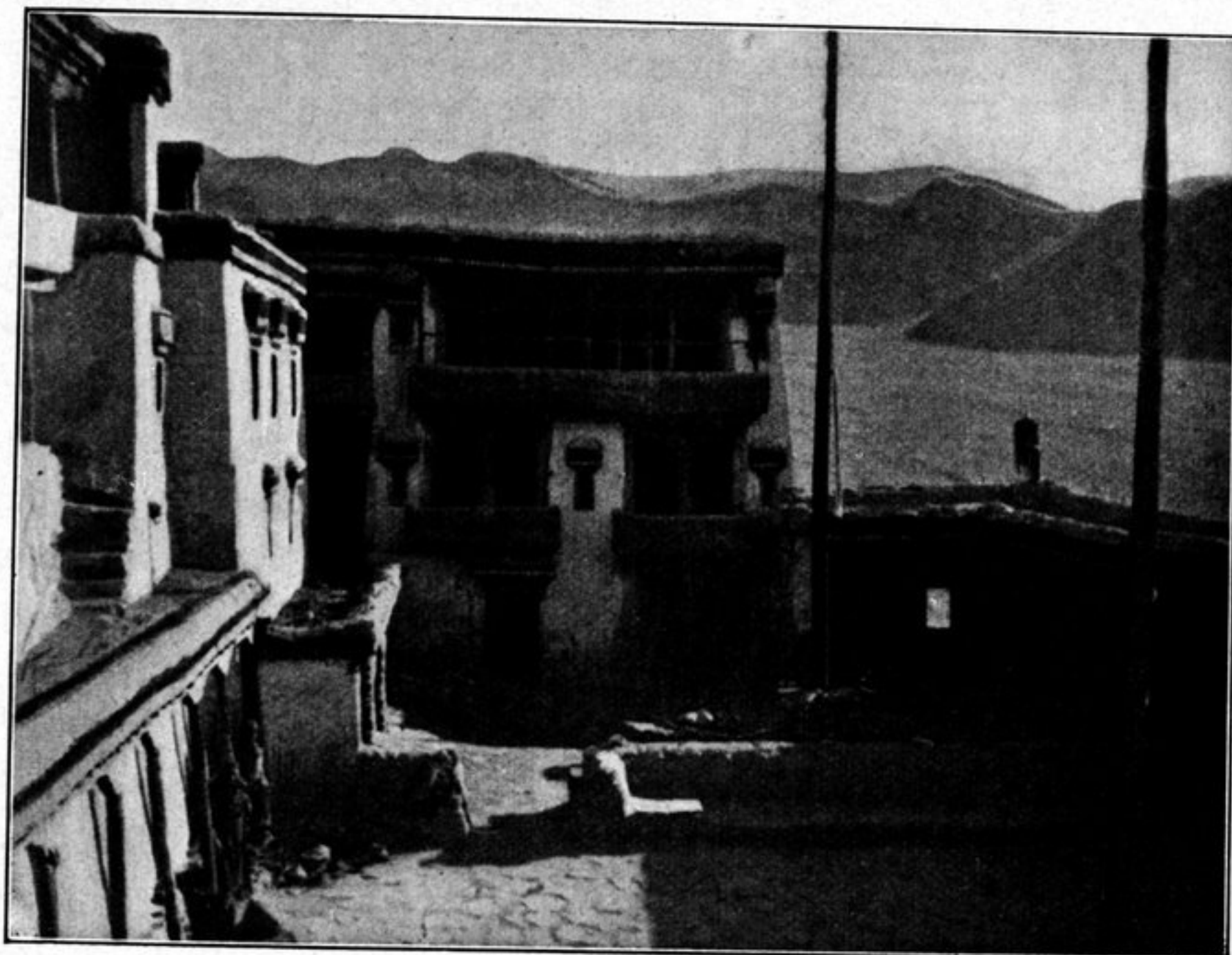


Fig. 280. THE SAME.

were, and the circumstance that the river is not joined by its great tributaries until it gets farther down, and I realised that there existed no grounds for disappointment. Besides, the shape of the river-bed alone bears eloquent testimony to its