

upon reaching that point, we left the road to Skardu and ascended the valley of the Dras, which is deep and large, and traversed by a considerable body of water, though it was then in great part frozen. Generally the snow continued to increase in amount, and went on steadily increasing until we reached the Sodschi-la, although

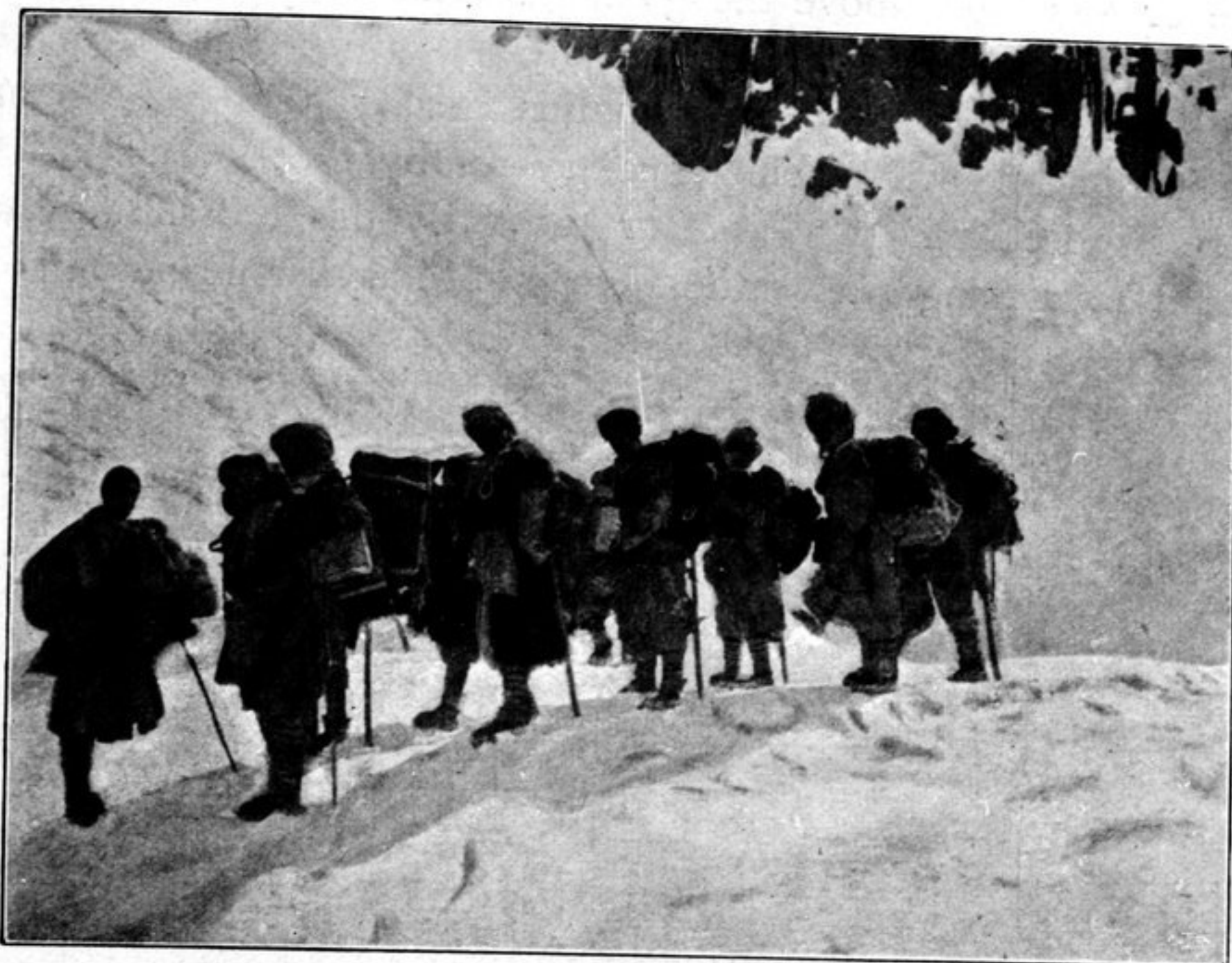


Fig. 292. GROUPS OF MY LADAKI COOLIES.

this pass is a good deal lower than the two that I have already mentioned. The road again runs like a shelf on the side of the slope, and was in so far difficult and tiring that it was covered with hard-trodden snow, as slippery as ice. Here and there on the slope stands an occasional coniferous tree, though quite stunted in