

went through. The ascent from the station up to the actual pass (alt., 11,500 feet) is very slight, scarcely noticeable, and on the other side the descent is equally gentle at first. In fact, in such a dead level of universal whiteness it was difficult to say

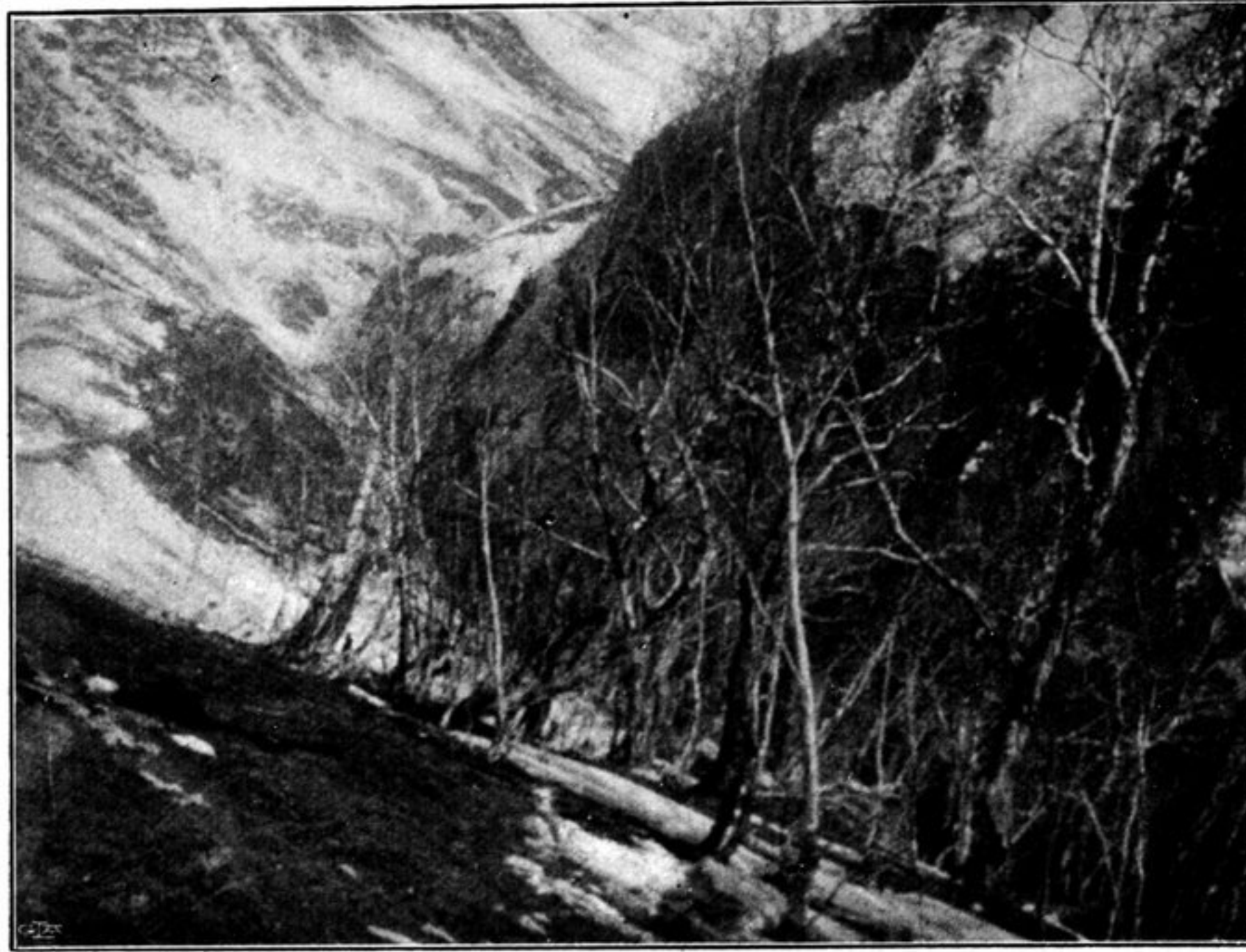


Fig. 295. ON THE SLOPES OF SODSCHI-LA, JANUARY 1902.



Fig. 296. ON THE SLOPES OF SODSCHI-LA, JANUARY 1902.

where the actual water-divide was situated. But it is the mountainous character of the country on the south side of the pass that makes the Sodschi-la so dreaded, and generally keeps it closed for a certain part of the winter, or at any rate makes it