

had gathered on the mountains. In order to make a path for the caravan we hired a couple of hundred yaks, which we drove up over the pass, to trample down the snow.

On the 8th April I travelled only the short distance to Tagar. All night it had hailed and snowed, and we suspected that the amount accumulated on the

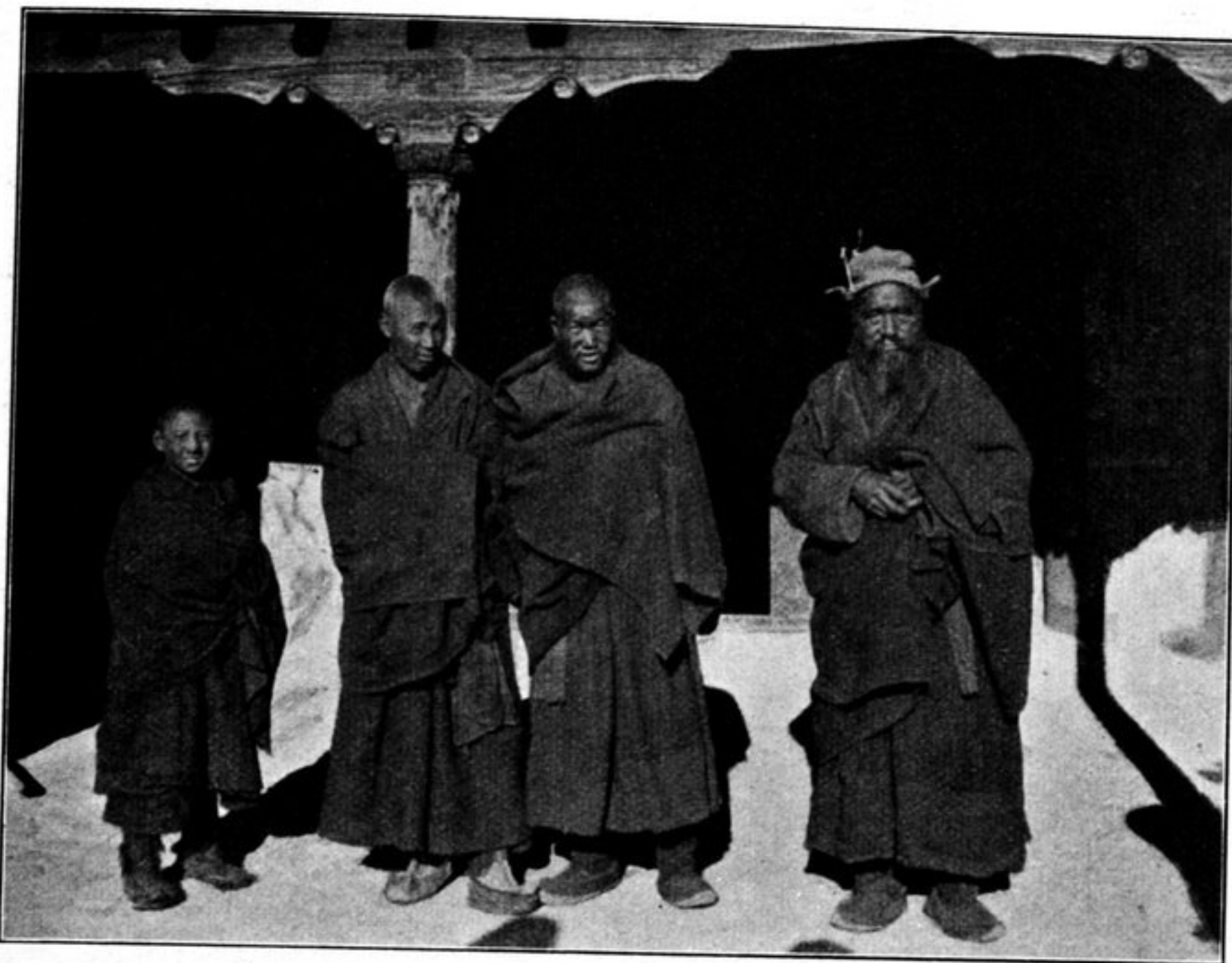


Fig. 309. THE PRIOR AND THREE OTHER LAMAS OF HEMI.

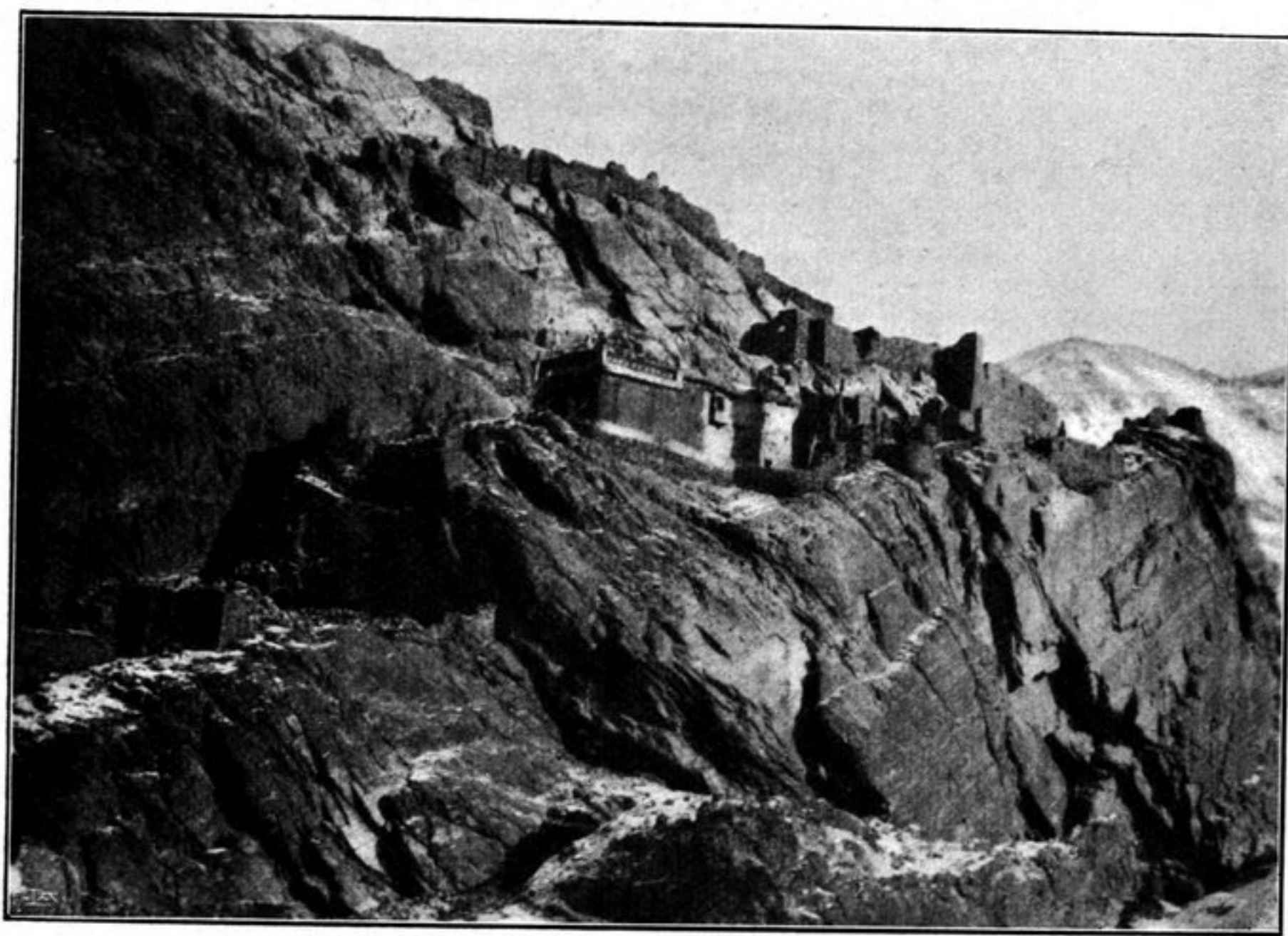


Fig. 310. TEMPEL IN EASTERN LADAK.

pass would be still further increased. Moreover, the acclivity leading up to it looked threatening and inhospitable, its higher parts being wreathed in thick, snow-laden clouds, which every now and again swept down into the pass, under the impulse of fierce intermittent blasts like those of the Sodschi-la. Only a few weeks before I