

the base of a perpendicular cliff; but some distance lower down the river glides diagonally across to the opposite side, to wash the foot of another cliff, and then we were forced to ford it again. For almost the whole of the way the water

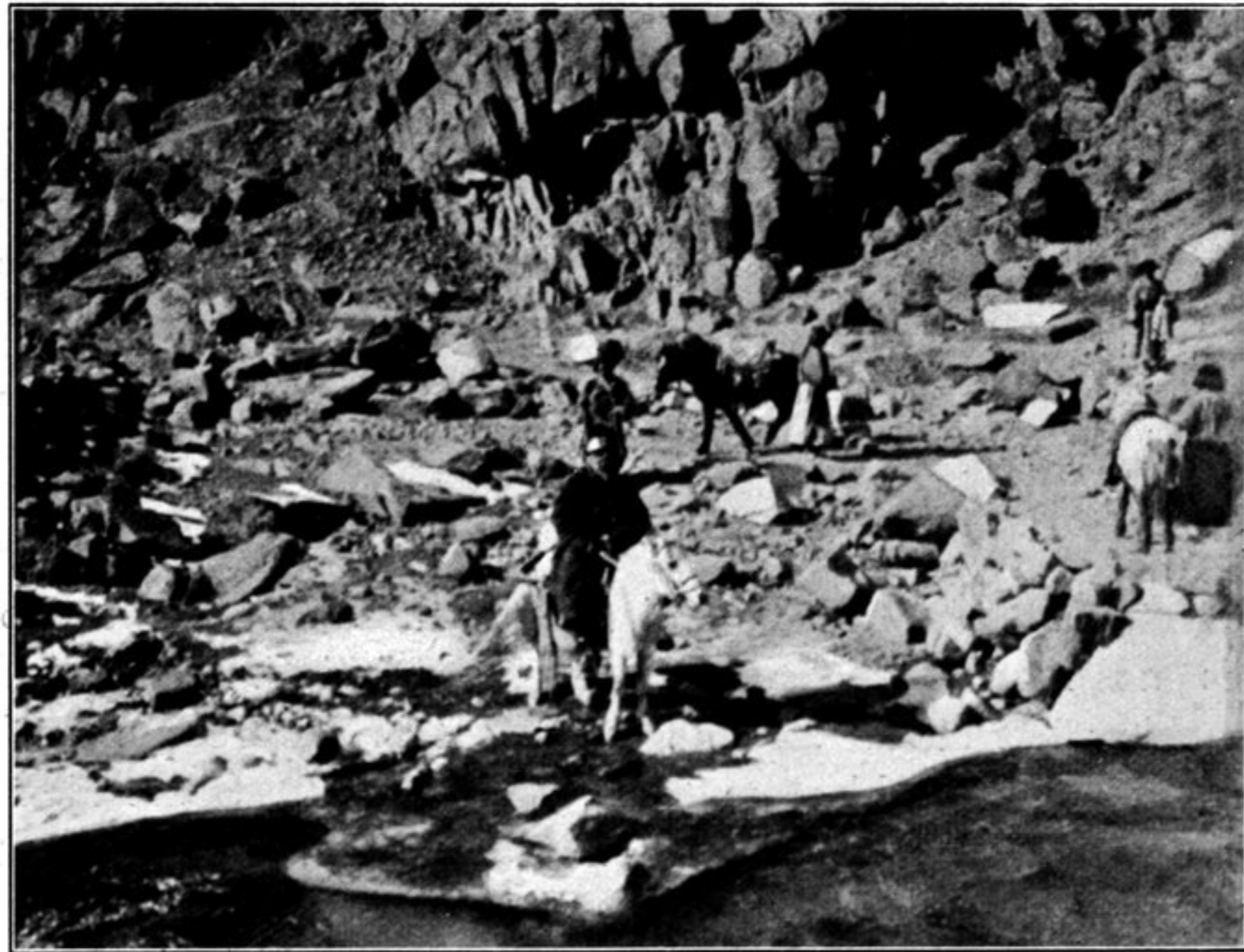
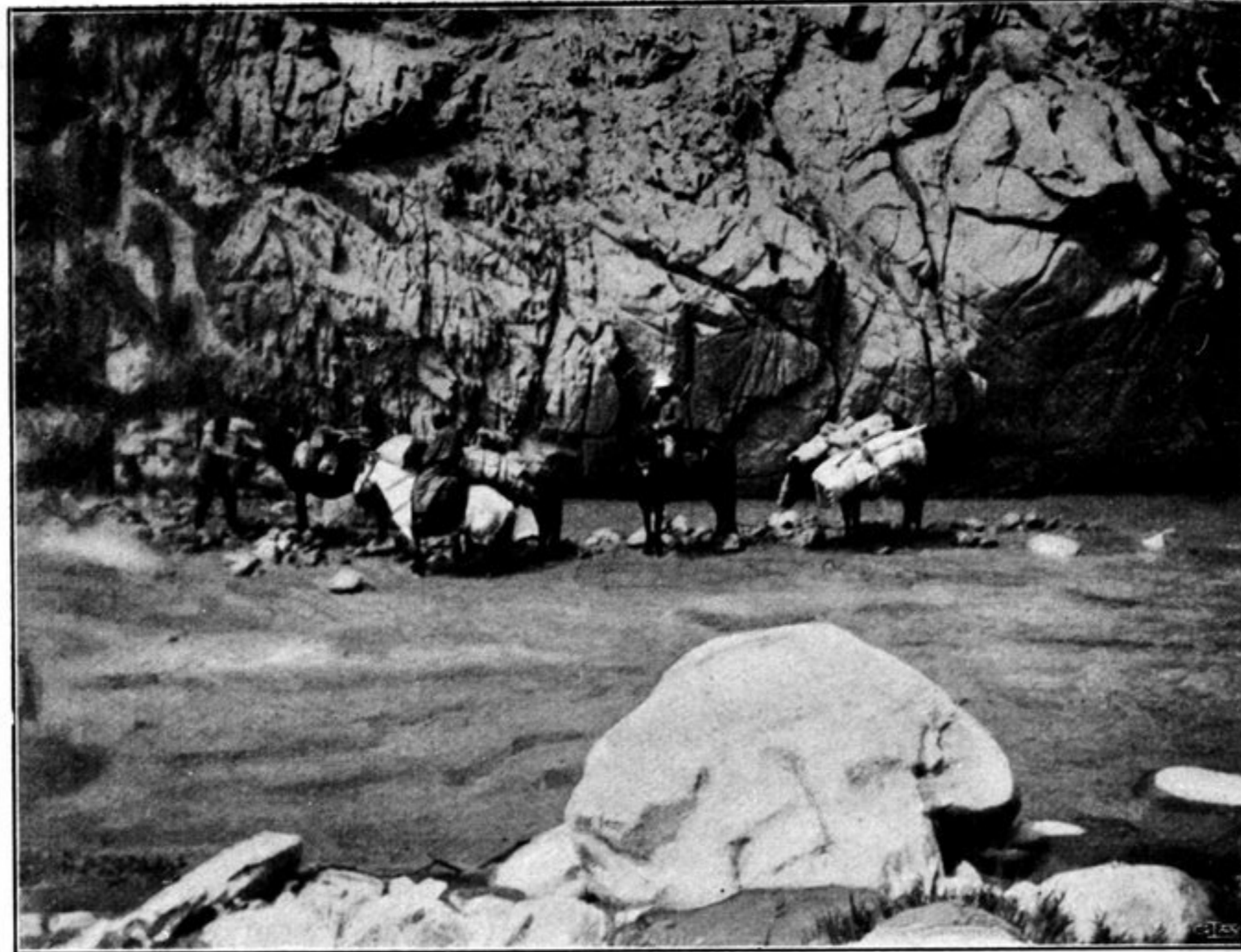


Fig. 315. THE RIVER OF DRUGUB.

foamed and boiled in little restless, broken cascades amongst the stones; it was very seldom that it flowed along quietly for a short distance. The morphology is the same as it is in all transverse glens cleft through granite; the vertical dimensions are more striking than the horizontal. Above our heads towered mighty