

stones and slabs along the faces of the precipices, and upon them the road is carried. This is to avoid fording the stream unnecessarily, a task that grew every day more difficult. During the high-water period it is probably quite impossible to cross

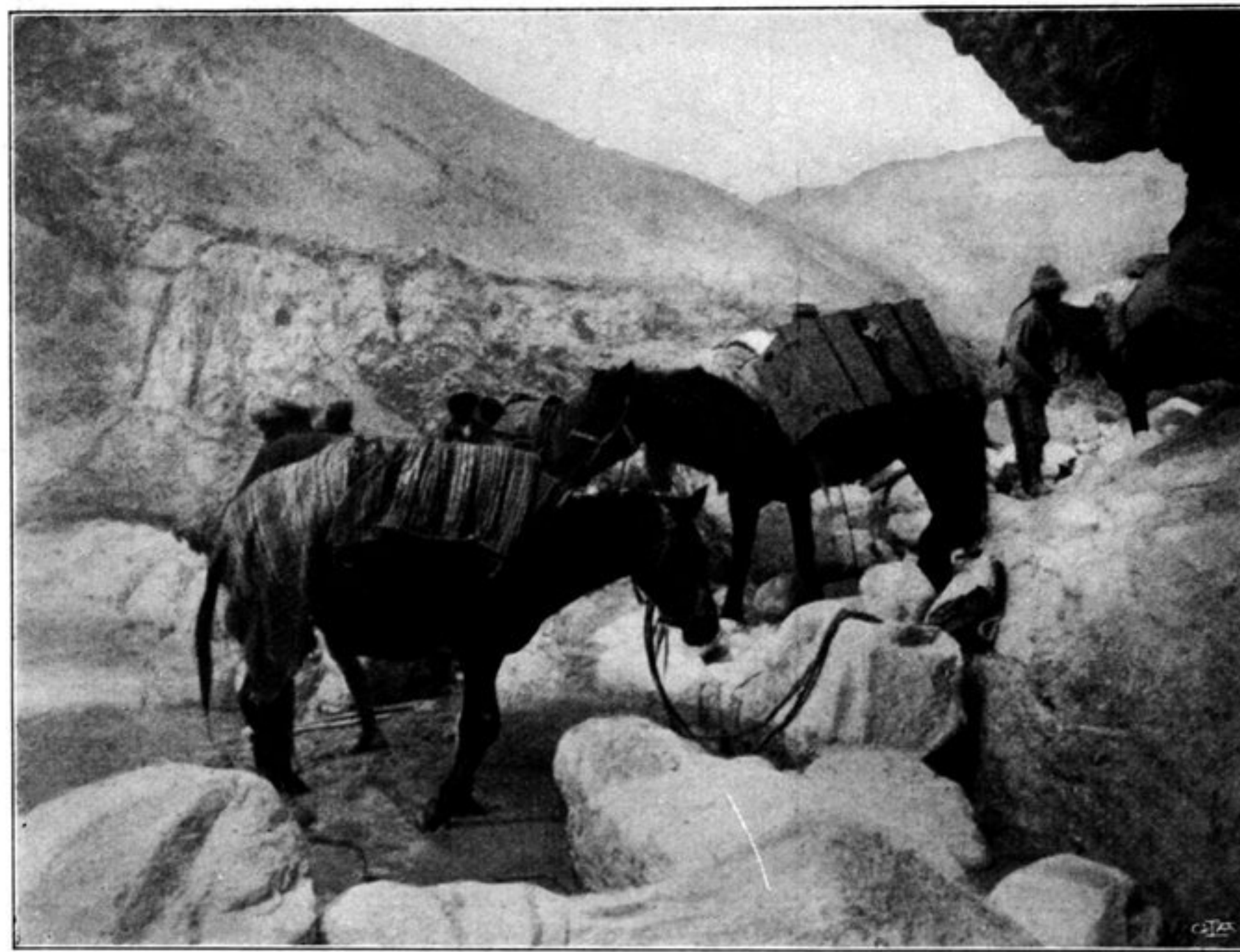
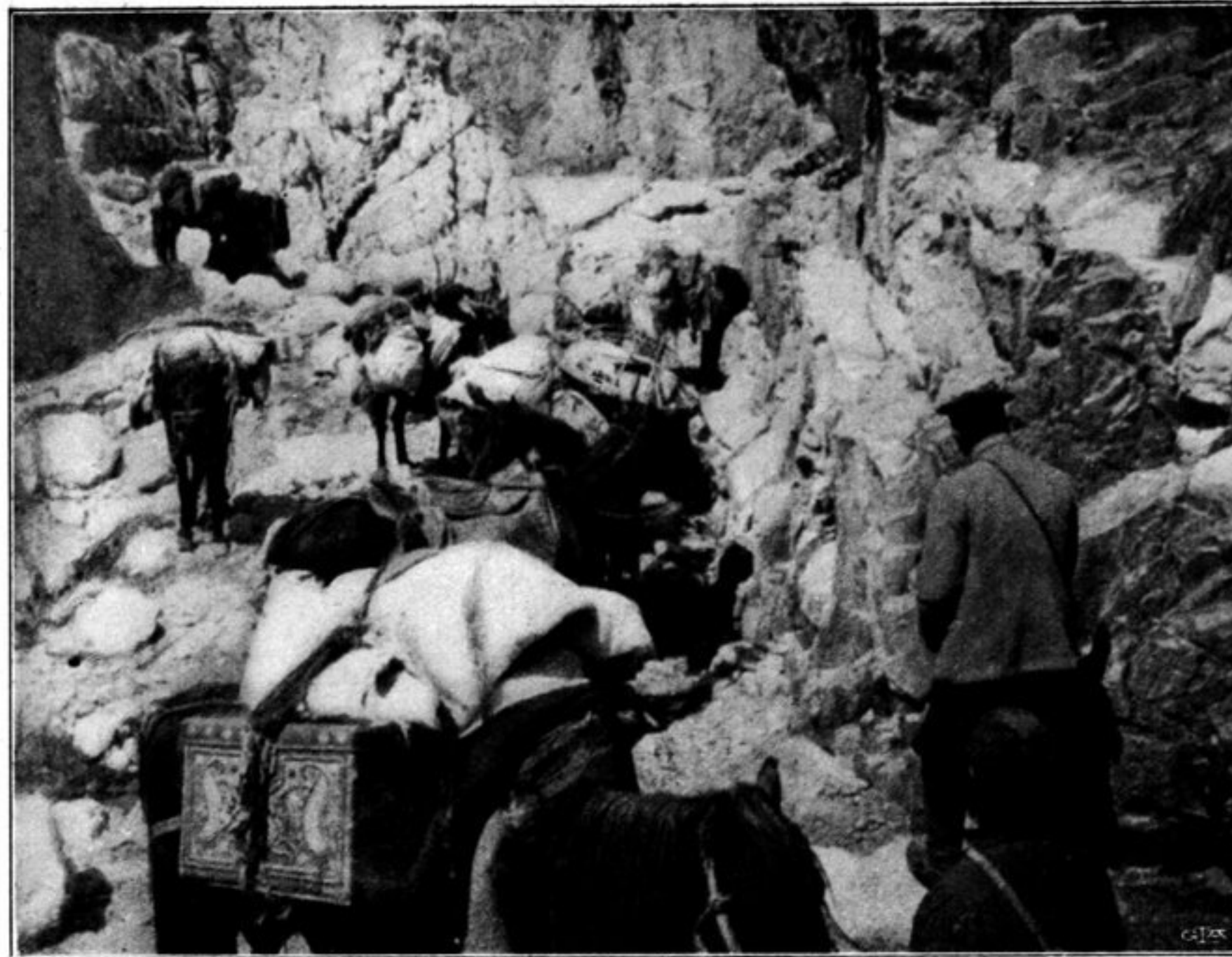


Fig. 317. A SHORT HALT.

the stream; it will then be too deep and too furious. Here I found it convenient to ride a yak, for I could safely leave the animal to look after itself, while I devoted all my attention to my map-making, which the winding character of the glen made very exacting.