

great offshoot which separates the stream of Drugub from the river of Schejok. Higher up this offshoot is cleft by a deep and energetically carved side-glen, the rocky outlet of which faces Schejok. At last however the valley turned to the east, and then to the north-east, and finally to the north. Just in this part of its course

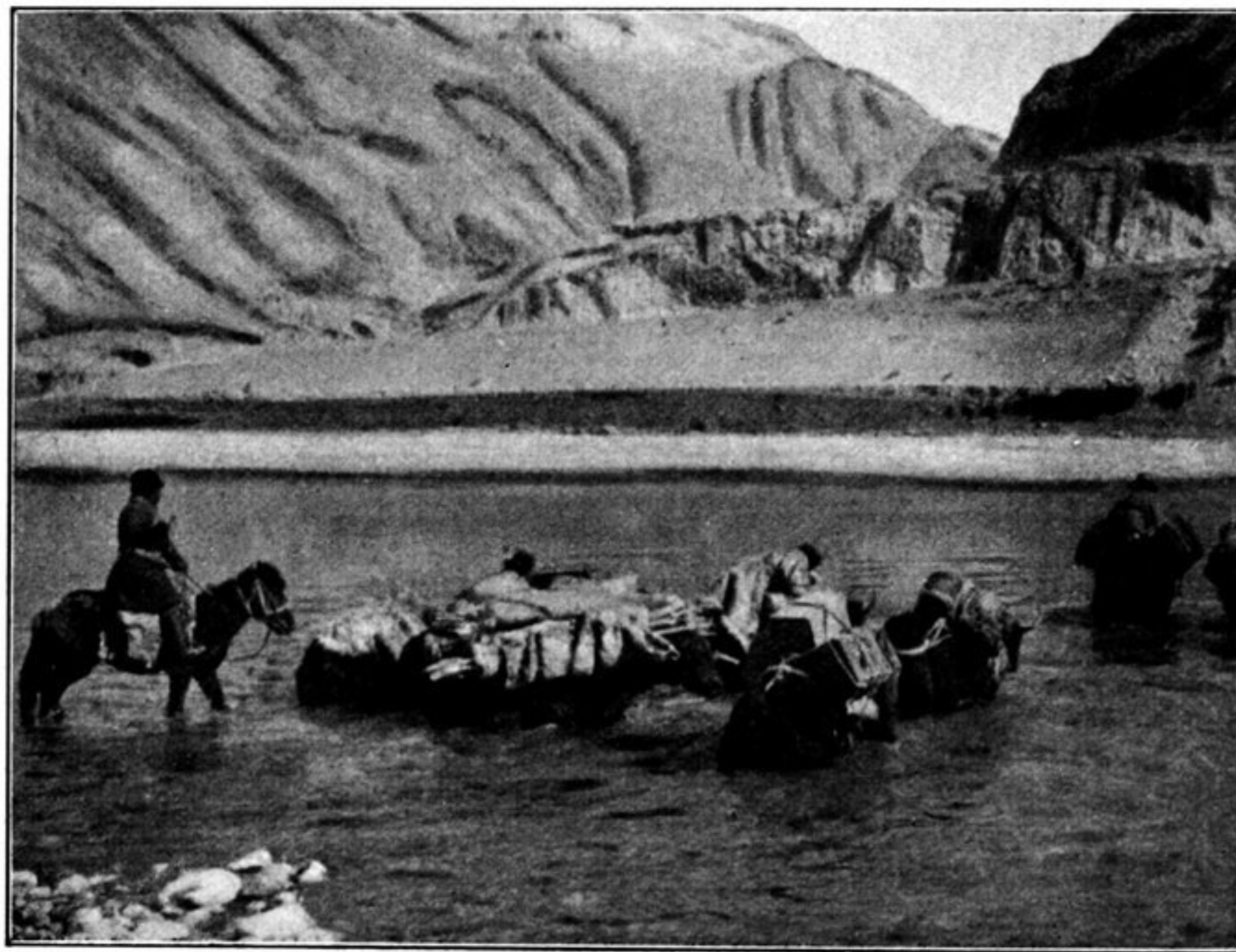
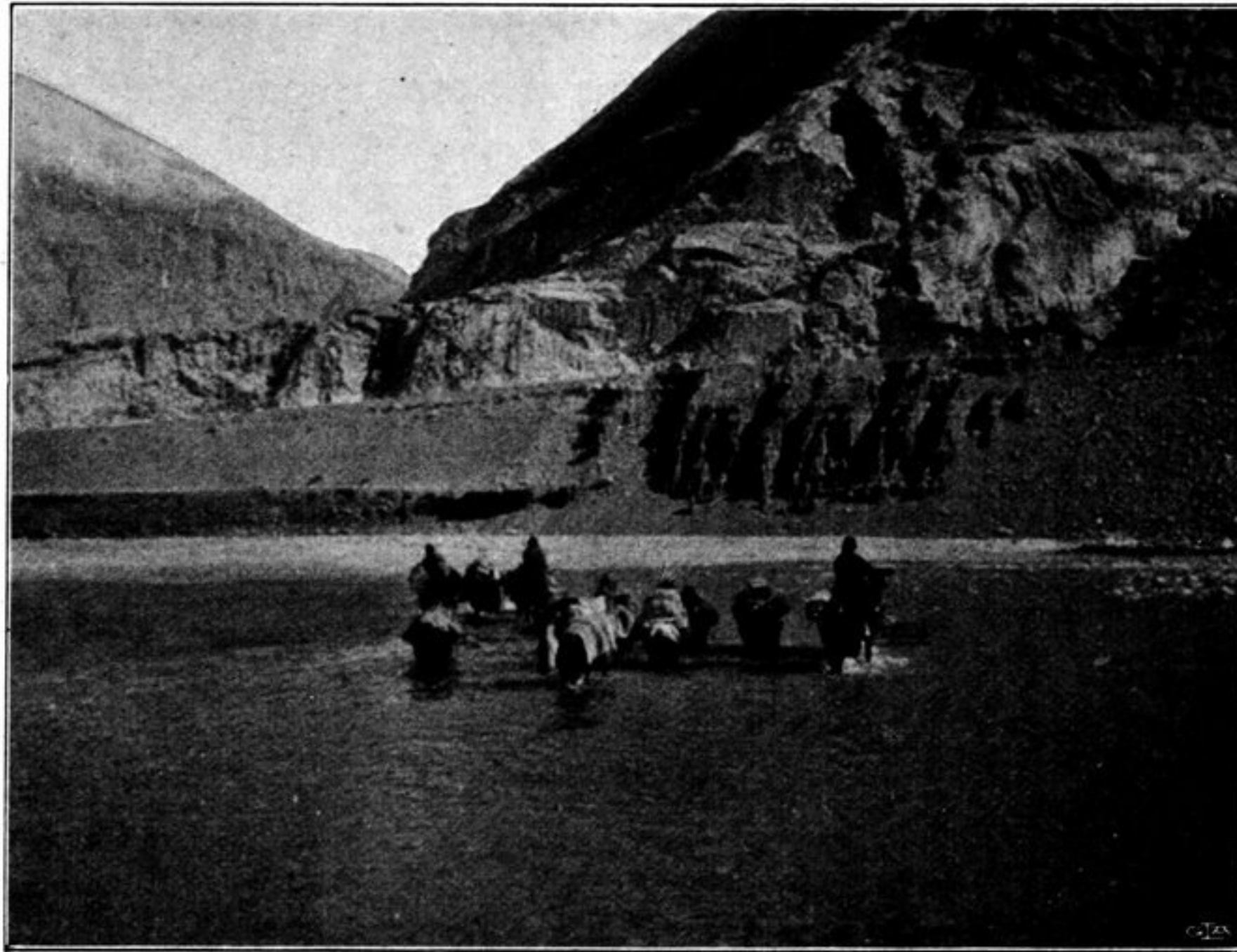


Fig. 322. CROSSING THE RIVER OF SCHEJOK.

the Schejok river alters its direction in a very remarkable way. The stream comes down from the north, but upon reaching the bend in question it turns sharply towards the north-west. Thus all the way from the Kara-korum pass it succeeds in breaking through the mountain-ranges in those localities in which the