

April 15th. During this day's march granite was again the predominant formation, though other rocks also occurred, *e. g.*, diorite, white marble, and a light green schist exceedingly fine of grain. The bottom of the glen is completely filled with grey granite detritus and stones, which hurt our animals' feet, thus causing

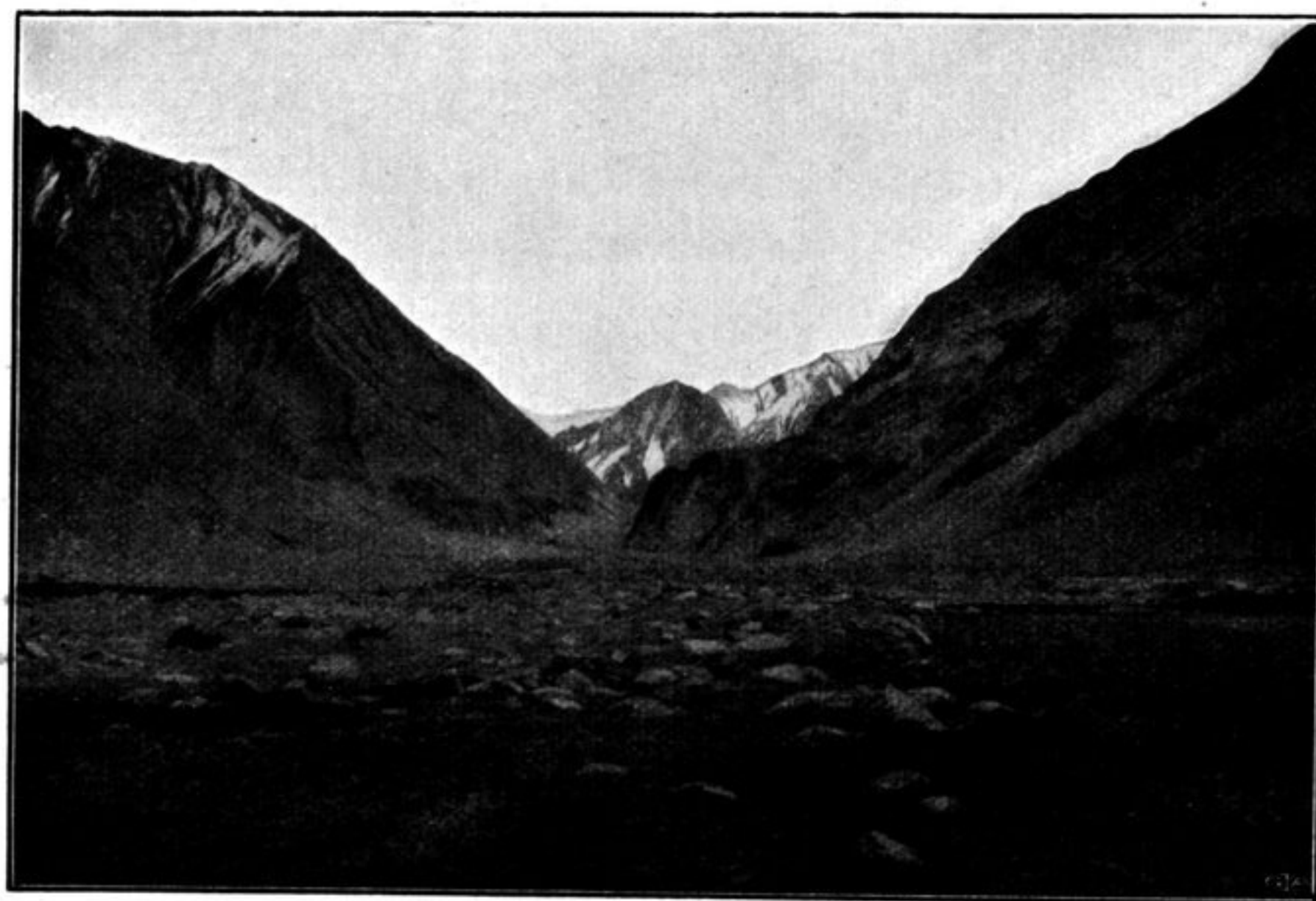
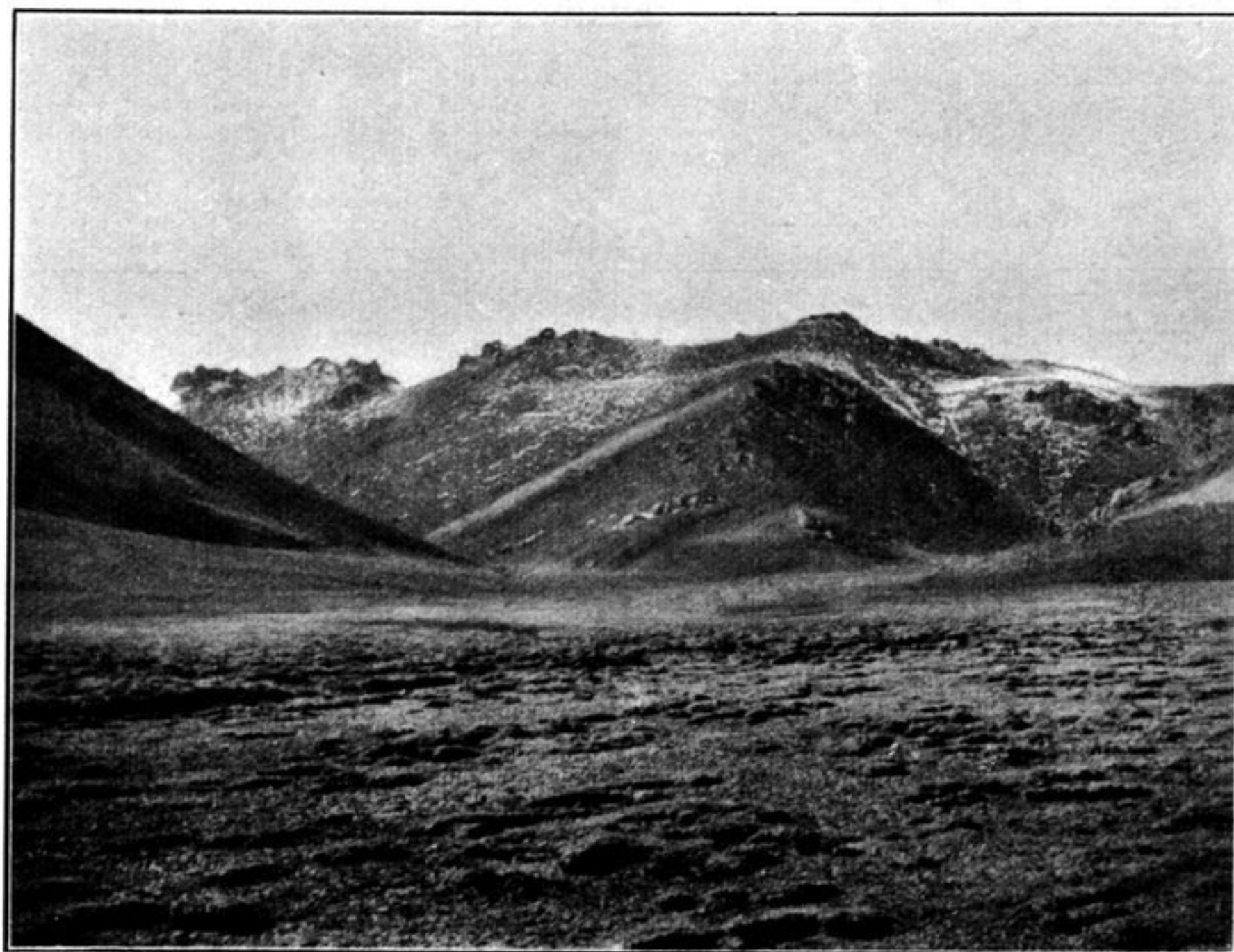


Fig. 325. VIEWS UP THE SIDE-GLENS.

our advance to be very slow. The yaks in particular began to show signs of fatigue. There were, it is true, tracts of soft sand, but they were far fewer than on the day preceding. The glen then contracts a little; but only a relatively small part of its level gravelly bottom continued to be occupied by the stream. The ascent is very gentle and evenly distributed: as yet we had not encountered any waterfall or even