

CHAPTER XXV.

OVER THE KARA-KORUM AND THE SUGET-DAVAN.

On the 21st April we did the interesting stage past the two glacier-arms of Kitschik-kumdan and Tschong-kumdan, both belonging to the vast upheaval of the Kara-korum mountains. The sky was gloriously bright with neither snow nor wind; indeed we actually felt it warm, although not to the same extent as on the Tschang-la. Had the snow whirled as it did the day before, it would have been difficult to make the crossing, besides which we should have lost the spectacle of the wonderful and majestic scenery which is characteristic of that glaciated region.

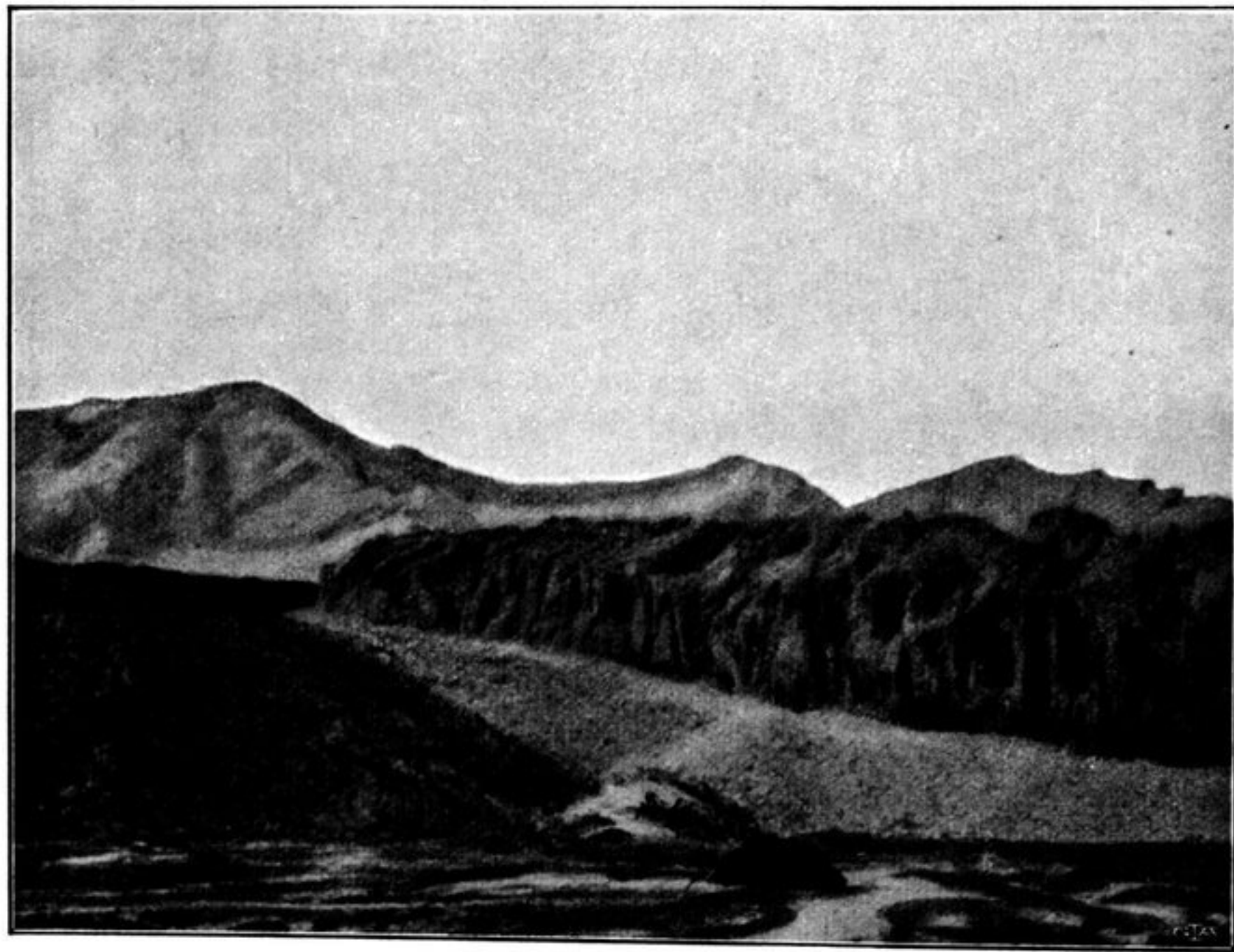


Fig. 332. VIEW OF THE RIGHT SIDE OF THE KITSCHIK-KUMDAN GLACIER.

At first we proceeded north-north-west on the right bank of the river, amongst a chaos of small hills and heights. The amount of snow in the bottom of the glen increased, but the quantity was not at all serious until we reached the vicinity of Japtschan. We passed close on our left a smaller glacier-arm, or perhaps only the