

the year, but in that particular year it had begun only one month before the time of our arrival. It was expected therefore that the stream would carry a bigger flood than usual.

April 28th. After leaving the big gravel-and-shingle terraces at the foot of Suget we gradually approached the Kara-kasch-darja and then travelled down its left bank. The bottom of the glen still continued to be filled with detritus and stones of all sizes; but the köuruk bushes became increasingly numerous and were growing on small mounds. On our left we passed a side-glen, up which was a track leading to the summer grazing-grounds, and then, evidently, farther on over some pass to Kok-jar. At first the stream flowed north-east, and then north. Its glen, which

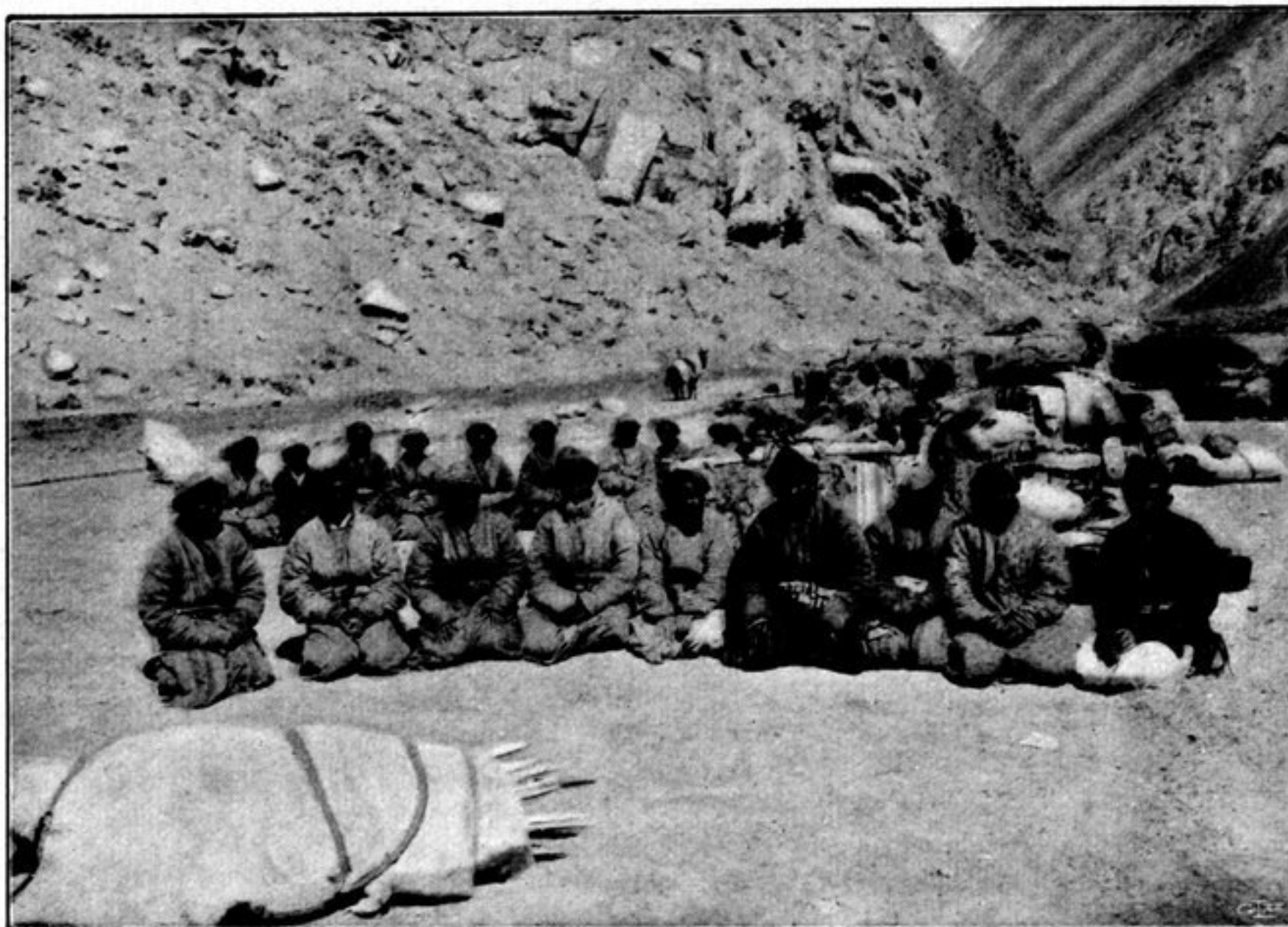


Fig. 339. THE BEK AND OTHER KIRGIS AT CHAL-TÜSCHKÜN.

forms an expansion at Suget, contracts again after that, and at about 50 m. above its floor old erosion terraces were visible. Here we met with partridges and wild-duck; but nobler game there was none, owing, I was told, to the poverty of the grazing. We crossed the river twice; at one point, where the stream brushes the foot of the mountains on the left side of the glen, there were still fairly thick ice-sheets. At Chal-tüschkün a side-glen enters from the S. 80° W.; in its outlet stands a small stone hut and on a little pinnacle is a masar. Here we encamped for the night at an absolute altitude of 3618 m. A little higher up this glen was the encampment of the bek, where he had around him his camels and horses, and sheep and goats. He said he had lived for sixty years in that locality and latterly had served as karaultschi. Out of the glen of Chal-tüschkün issues a brook, which during the night had grown to three times its former size; by that time the volume of the main river had likewise augmented considerably. During the day it had been only partly fine and twice there fell a sprinkling of snow. In the summer the Kara-kasch-darja is said to be so big that there are only two places at which it can be