

Fig. 341. KIRGIS CAMELS AT TOGHRA-SAJ.

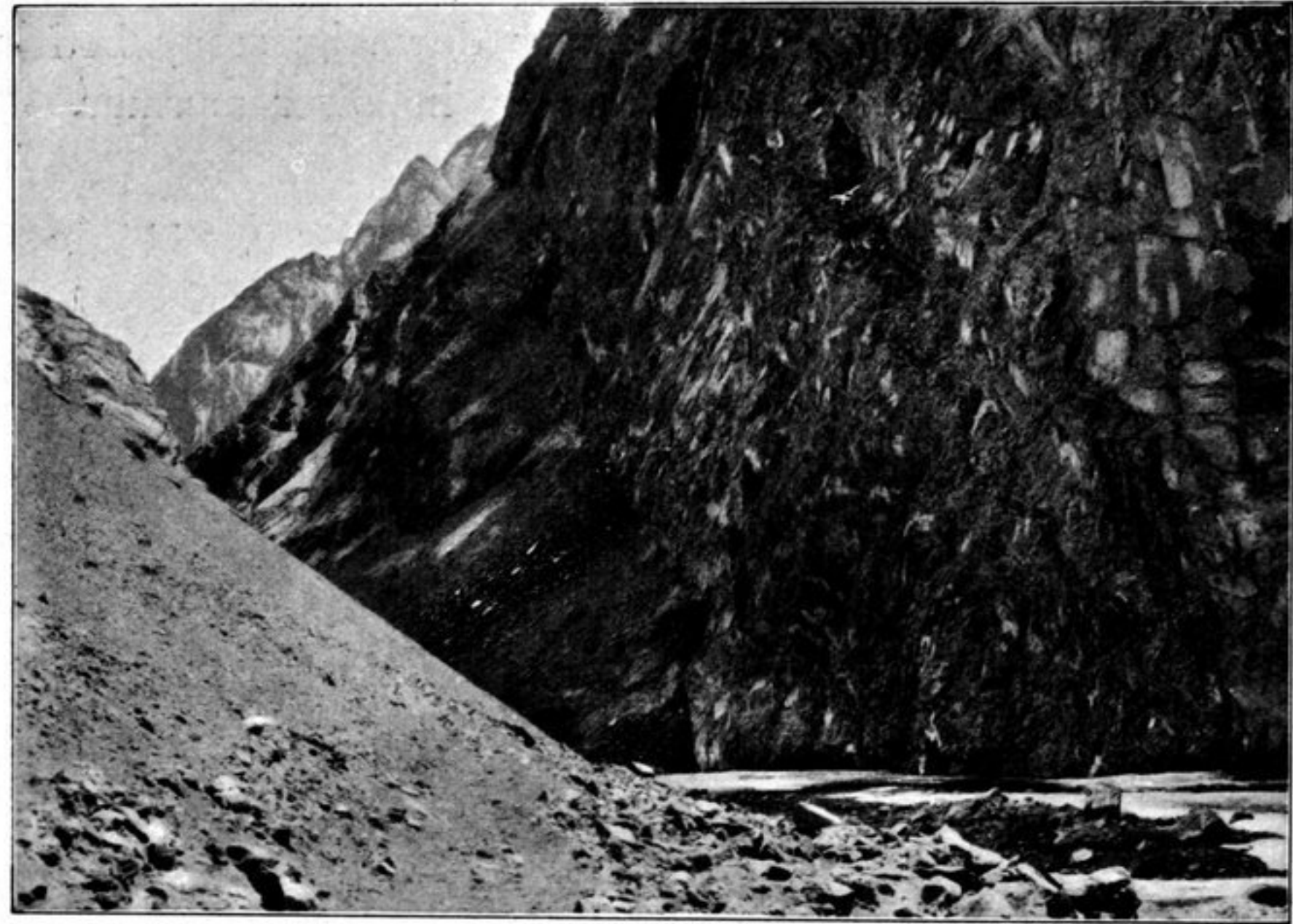


Fig. 342. BOS-TSCHAT.

very often we did not see it, owing to its bed being cut so deep down through the gravel-and-shingle deposits; besides, it was screened by the terraces on the top of which, gravelly and strewn with stones, the track makes its disagreeable way. A typical section of this transverse glen is shown in fig. 340. The river is seen hugging the rocky wall on the right of the glen, and consequently on that side terraces are less frequent, and what there are are in every case fragmentary. On the opposite side however the terraces are all the better developed, and are often built up in two storeys. In some places however the river crosses over and presses against that side, forcing the path higher up on the slope, so that it is like a narrow cornice