

CHAPTER XXXVII.

OTHER PARALLEL RANGES OF NORTHERN TIBET.

In what follows I shall endeavour to deal in the same way with the remaining ranges of Tibet. The Astin-tagh is separated from the next range on the south, namely the Akato-tagh, by a broad latitudinal valley which continues all the way to Anambar-ula. The Akato-tagh I crossed over five times, the passes by which I did so being in two cases so close together that, upon a comparison with the othe

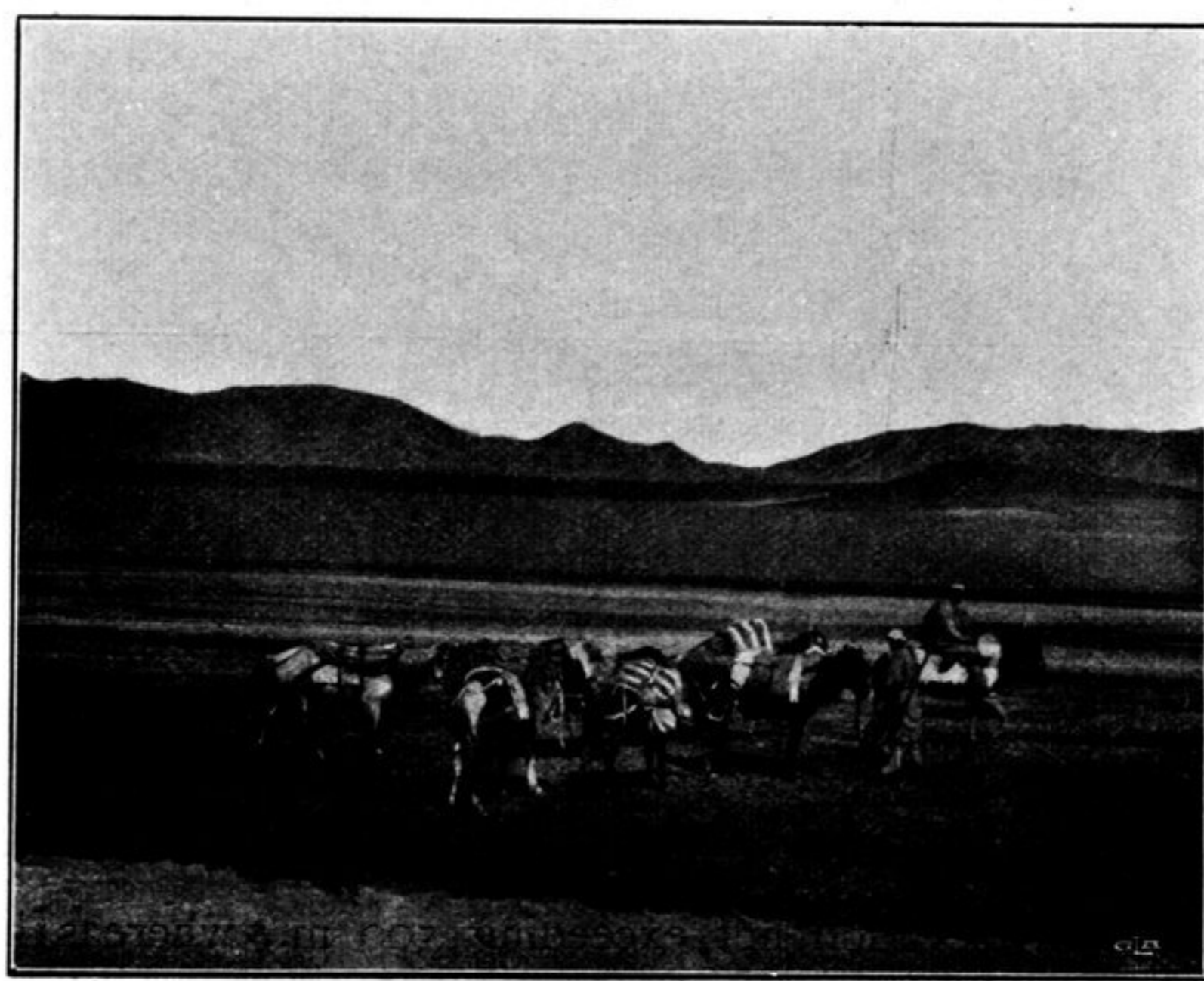


Fig. 362. LATITUDINAL VALLEY OF ARKA-TAGH.

passes in the same range, they ought to be regarded as one: I mean the low and easy saddle which lies south-east of Usun-schor, where I obtained readings of 3208 and 3154 m. Let us take the mean of these two altitudes, and put the height of the saddle at 3181 m. The nearest pass to this on the west, by which we crossed over the range again, is the Ghopur-alik, 4926 m. high, and still farther west lies the pass between Camps VIII and IX (1901), with an altitude of 4079 m. In the