

or are now in process of disappearing leave relatively deep depressions around them. A lake during the course of its gradual disappearance may pass through two or more of the variations of shape mentioned above. The Lakor-tso was

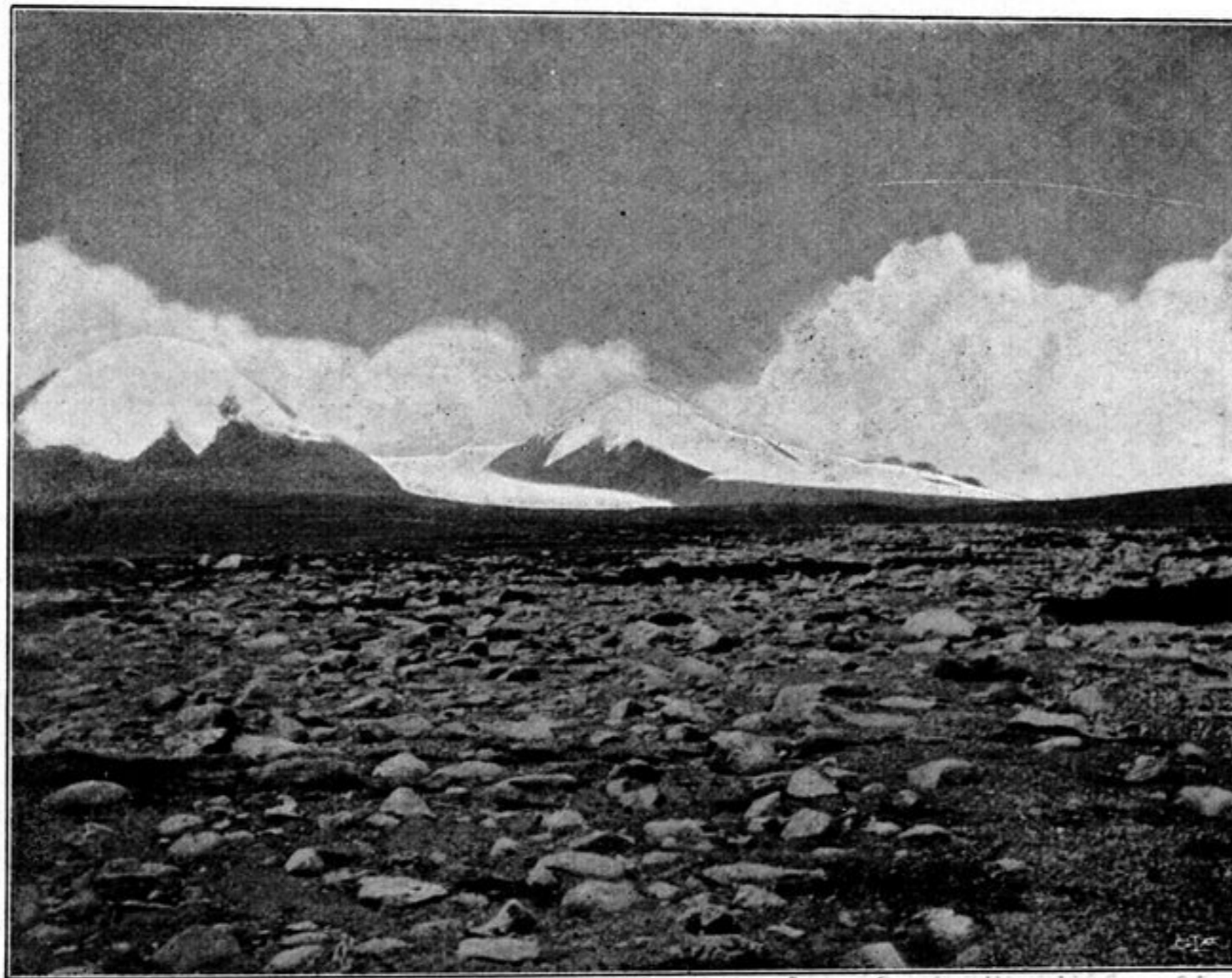
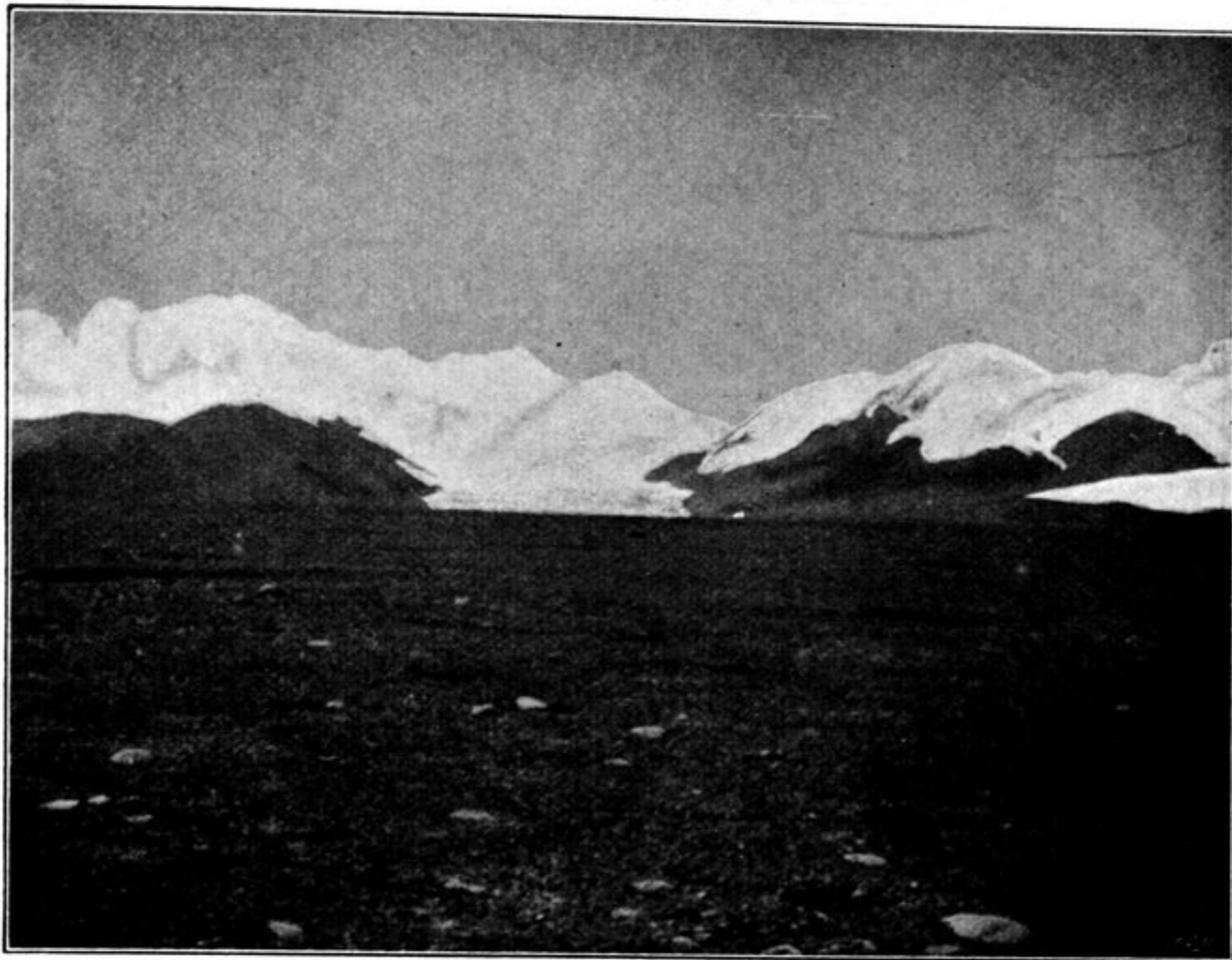


Fig. 378. SOME VIEWS OF ISOLATED GLACIATED MOUNTAINS IN CENTRAL TIBET.

formerly a true mountain-lake; at the present day it is something intermediate between that type and a flat lake, and after it has dropped still further, it will undoubtedly become a true flat lake, nowhere in contact with the surrounding mountains.