

I have recently stated, that the knowledge which we now possess about Tibet leads us to infer that chains of lakes exist in all the great latitudinal valleys, and that we may legitimately picture the whole of the internal-drainage plateau

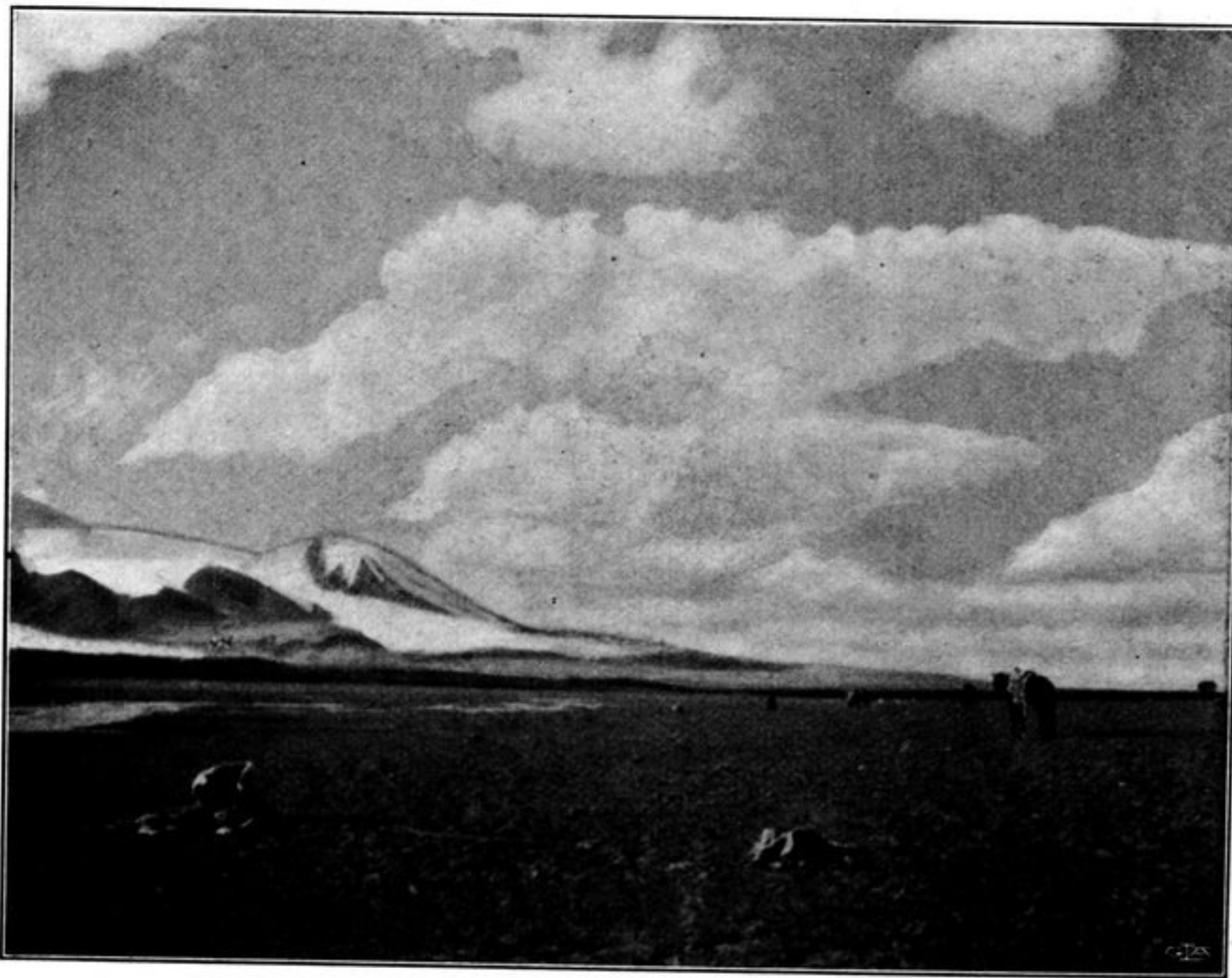
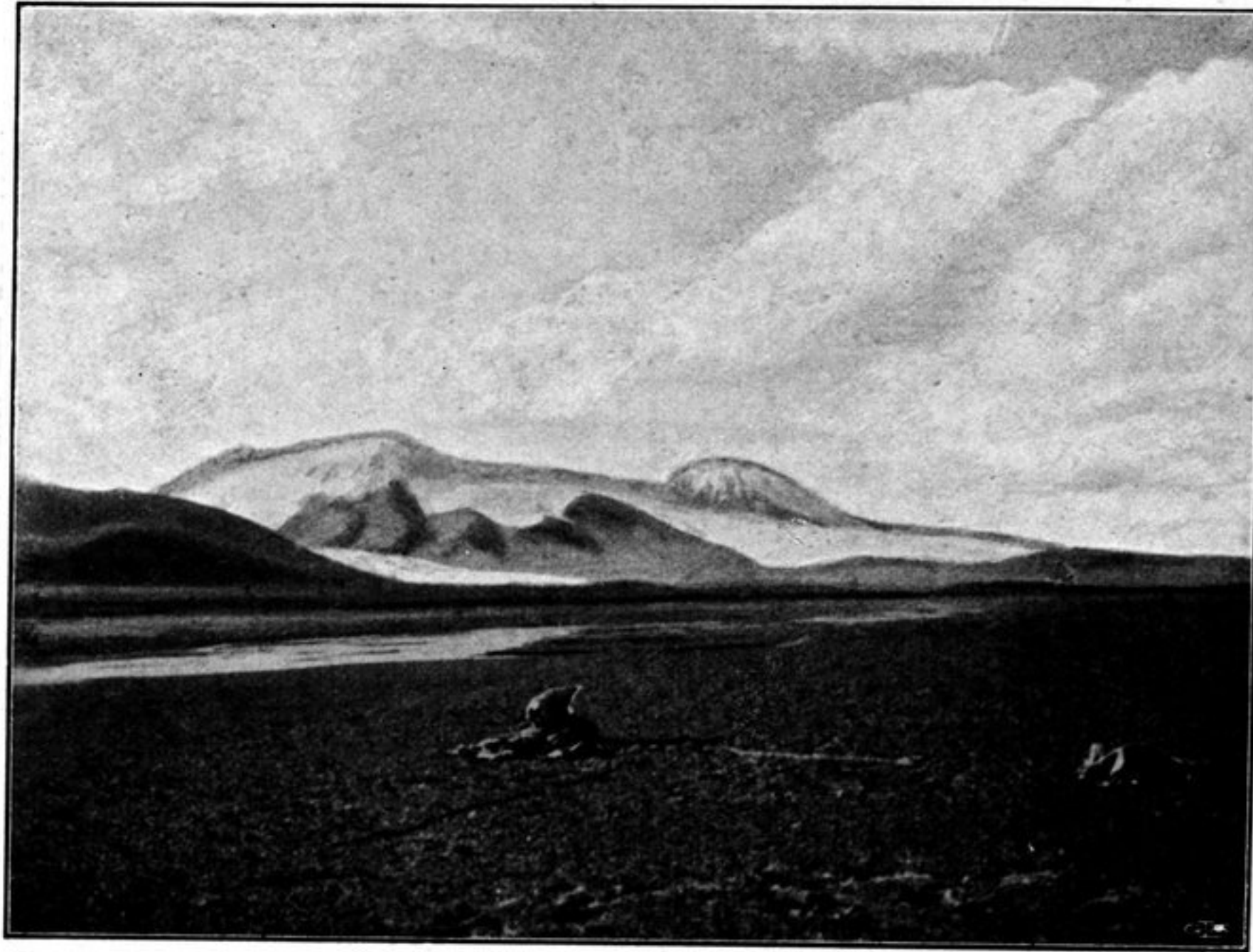


Fig. 379. SOME VIEWS OF ISOLATED GLACIATED MOUNTAINS IN CENTRAL TIBET.

country as dotted all over with lakes. All the same it would be an error to imagine them as being everywhere evenly and uniformly distributed. On the contrary, indications seem to point to their occurring in greater numbers in certain localities than in others. The regions in which they appear to be especially plentiful are between the Arka-tagh and Tang-la ranges, on both sides of the great