

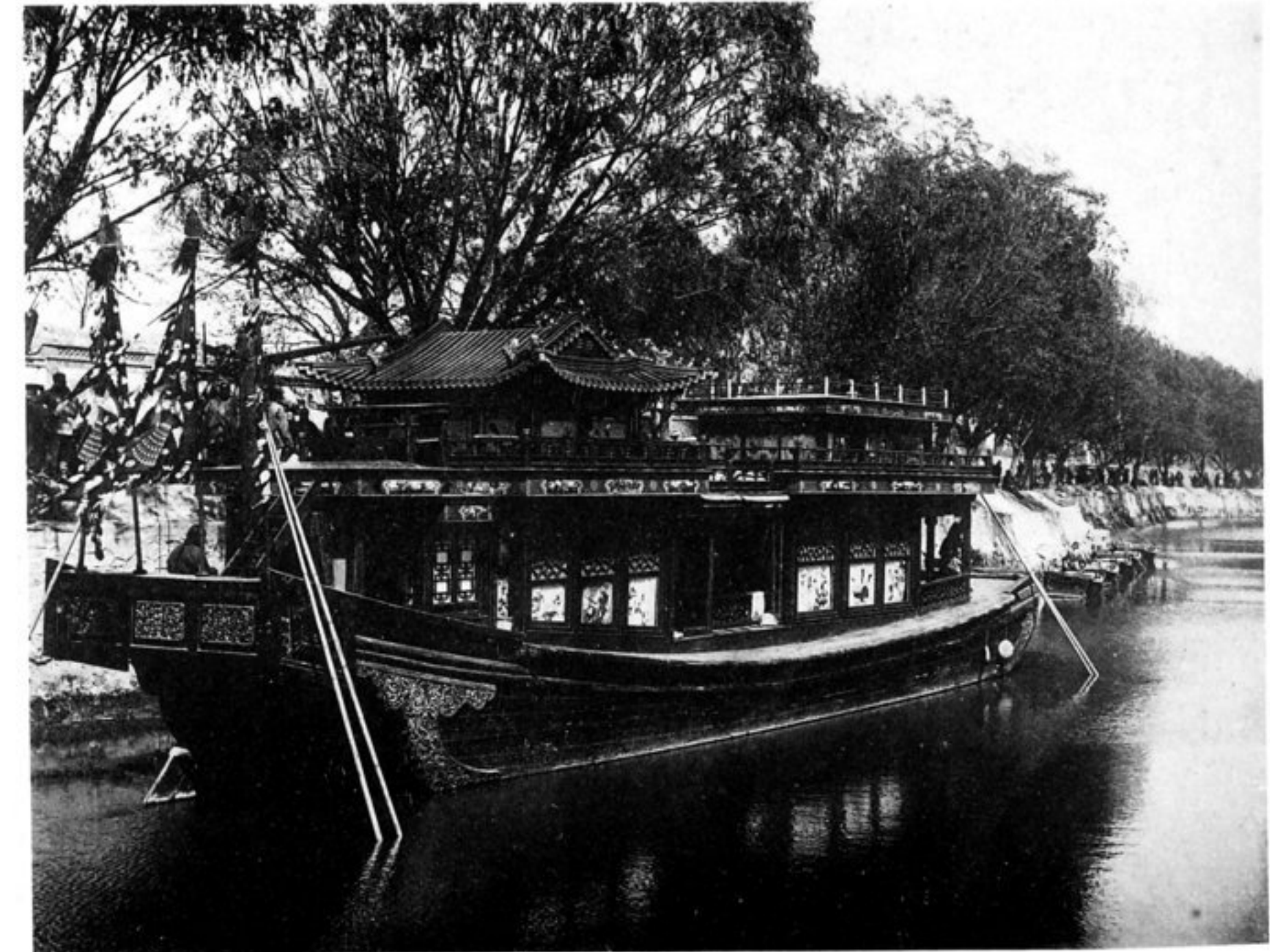
シベク驚ニ誠トコルナ巧精其リアシ刻彫像佛ノ多幾ニ側四ノ塔 寺塔五
The Five Pagodas in the Woo-Ta Temple.



リアニ地ノ里六約トコル距ヲ門直西ノ京北アシニ立建ノ賢忠魏朝明 寺雲碧
Pi-Yun Temple, 3 miles from Peking. This was erected during Ming dynasty.



リアニ内庭喇ルニアニ近附ノ場兵練旗八外門定安 塔寺黃
(Peking) The Marble Pagoda in Howan Temple.



船座寶帝皇
Imperial Barge.