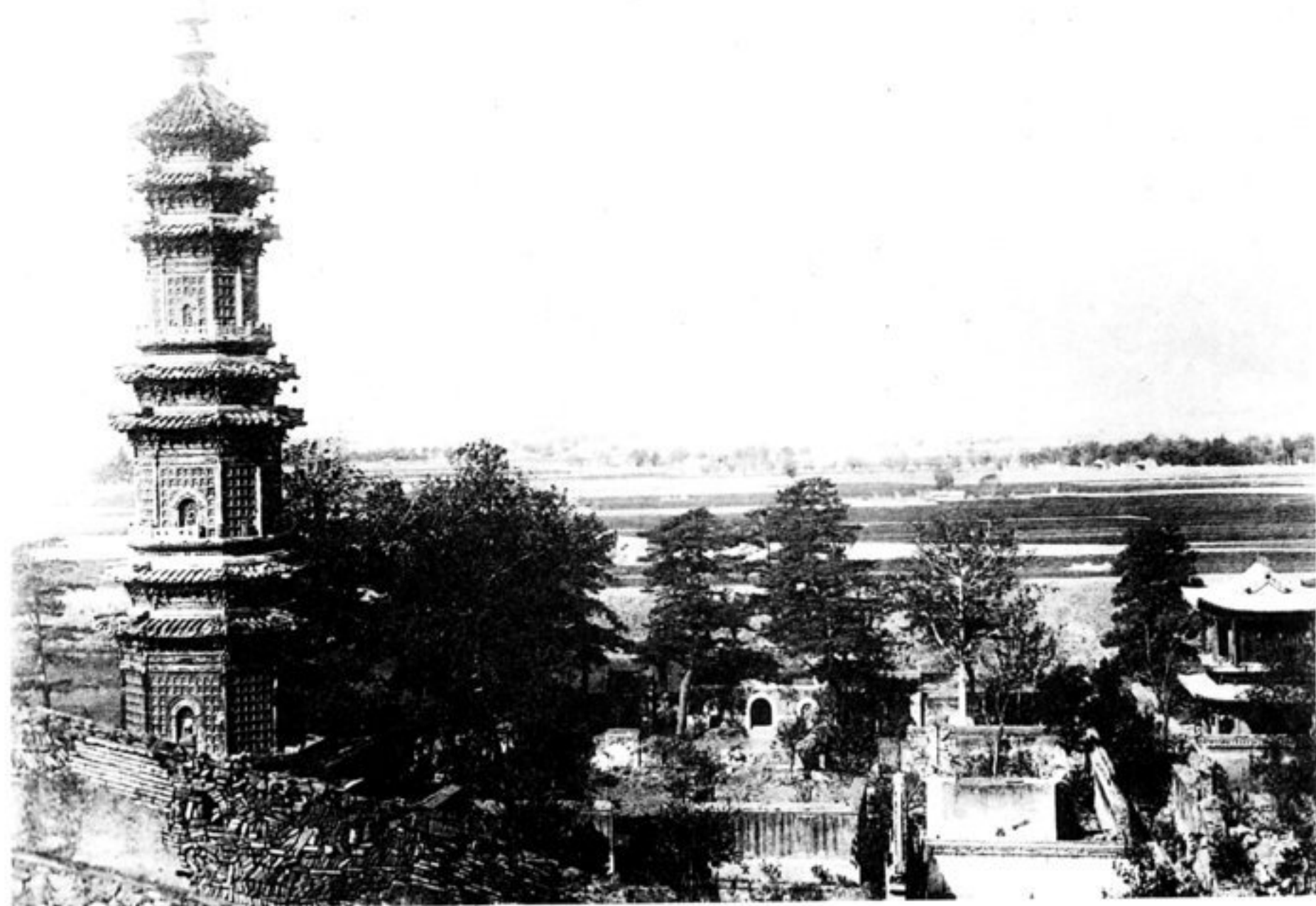


ニ山ノ其リタ經ヲ年百幾リヨシケ設ヲ宮行ニ所此宗章ノ金 泉一第下天 山泉玉  
 リセ付ヲ名ノ泉一第下天ニ之帝隆乾リヲ泉清  
 Yui Shen Shan. This is very famous for Spring.



ノ側塔テシニ物遺ノ代時魏リ在ニ南ノ觀雲白外門便西京北 塔寺寧天 (京北)  
 シヘス掬テシト然蒼色古モルセ場珊半ハ像泥  
 (Peking) The Pagoda in Tin-Ning Temple. This was erected during Wei dynasty.



リナ雅古ル頗造構其テシニ物遺ノ殿蓉芙宮離ノ金リアニ頂山 塔峰玉 山泉玉  
 Yui Hon Tower. This beautiful tower is standing on the top of Mount Yui Shen.



リタ得ヲ名其テ以ヲルア像佛臥ルナ名有ニ内寺リアニ山西 寺佛臥  
 The Sleeping Buddha in the Wo-Fo Temple at See-Shan.