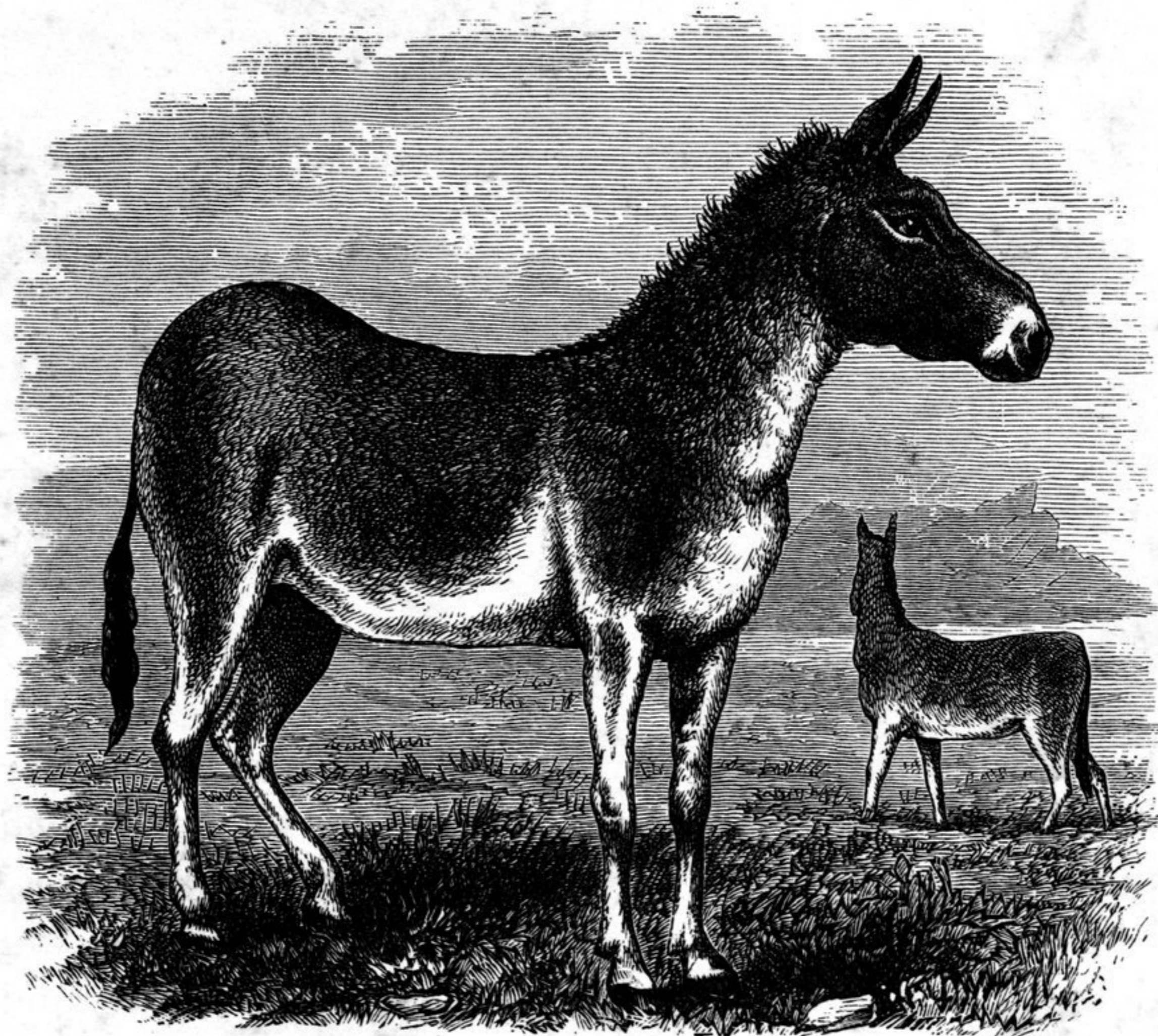


At this city you must needs lay in victuals for forty days, because when you quit Etzina, you enter on a desert which extends forty days' journey to the north, and on which you meet with no habitation nor baiting-place.² In the summer-time, indeed, you will fall in with people, but in the winter the cold is too great. You also meet with wild beasts (for there are some small pine-woods here and there), and with numbers of wild asses.³ When you have travelled these forty days across the Desert you come to a certain province lying to the north. Its name you shall hear presently.

NOTE I.—Deguignes says that YETSINA is found in a Chinese Map of Tartary of the Mongol era, and this is confirmed by Pauthier, who reads it *Itsinaï*, and adds



Wild Ass of Mongolia.

that the text of the Map names it as one of the seven *Lu* or Circuits of the Province of Kansuh (or Tangut). Indeed, in D'Anville's Atlas we find a river called *Etsina Pira*, running northward from Kanchau, and a little below the 41st parallel joining