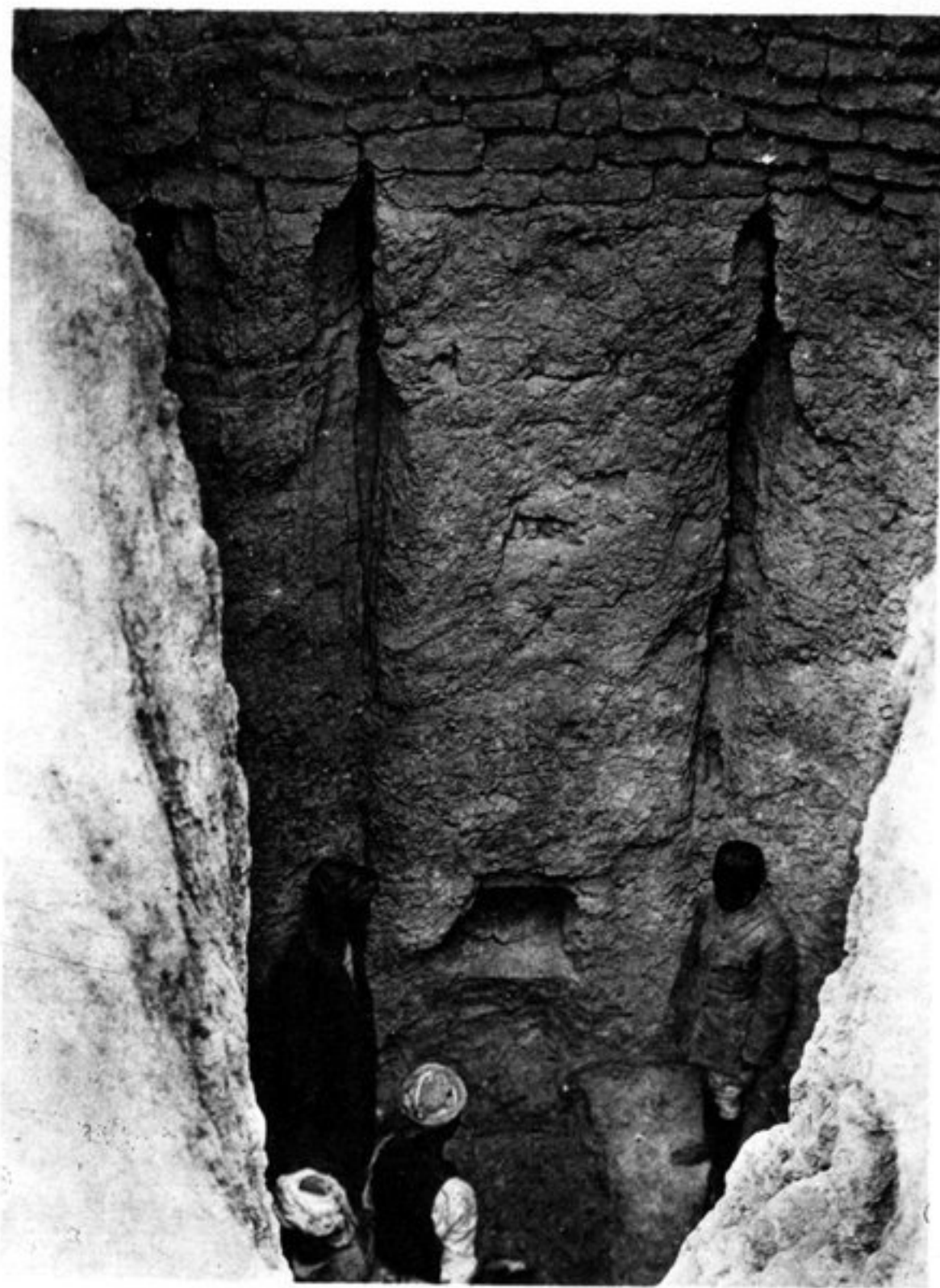
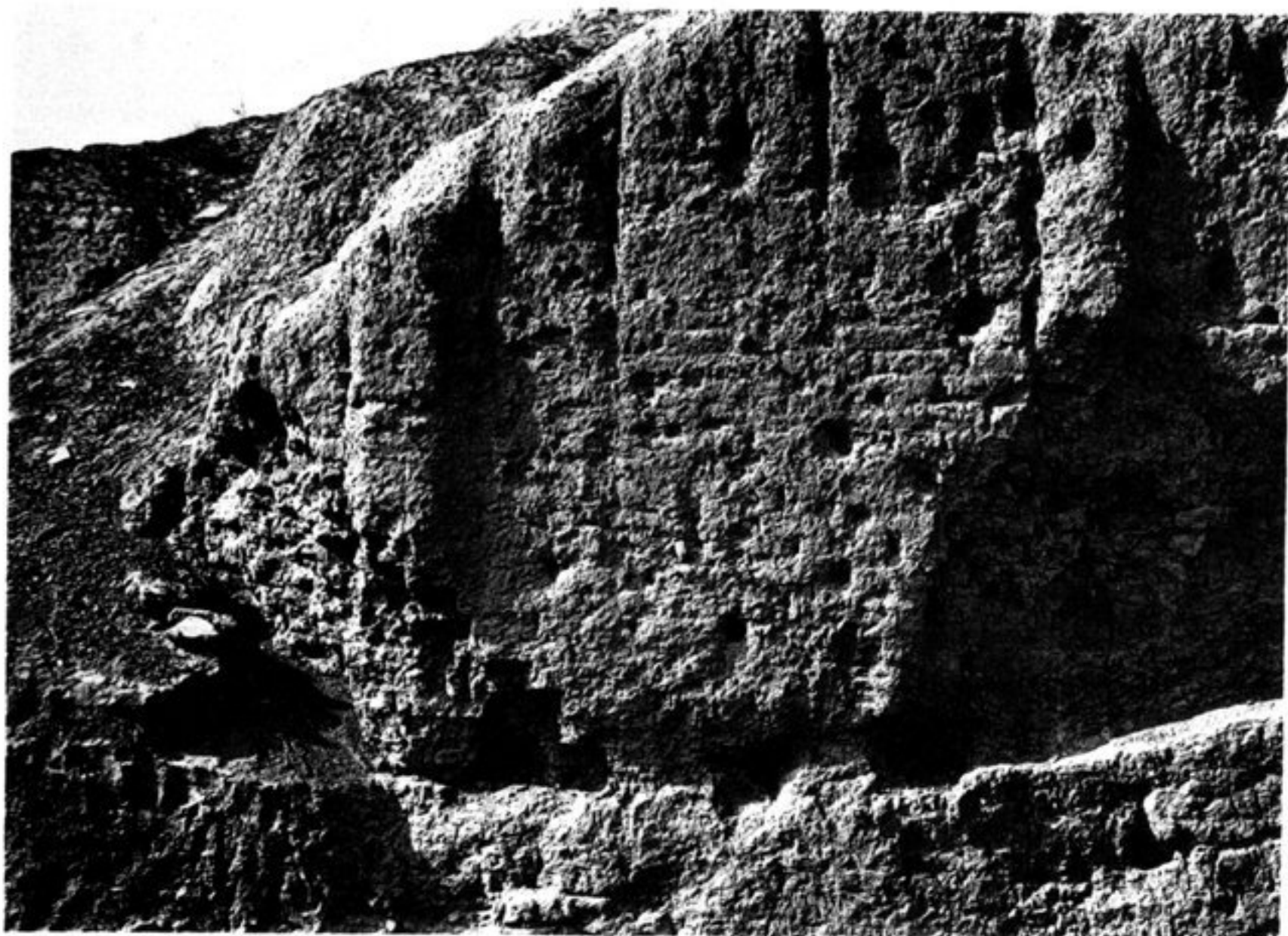




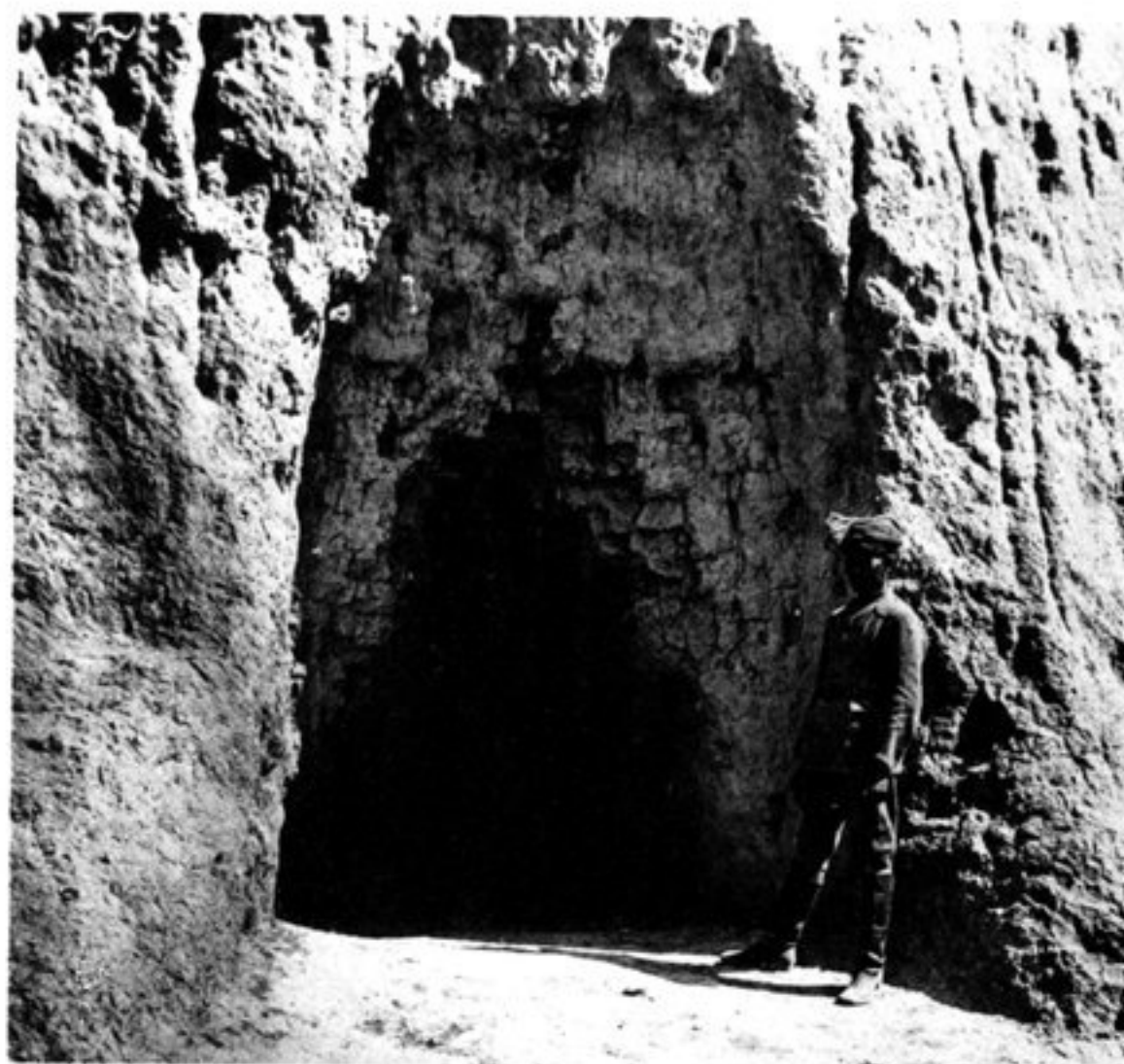
a) COIN NORD DE L'ESCALIER EST.



c) CELLULE INTÉRIEURE DU DOME.



b) PORTION EST DE LA FAÇADE NORD.



d) ENTRÉE SUD DES TUNNELS.



e) BLOCS DE CIMENT MASSIF.



f) FRAGMENTS DÉCORATIFS.