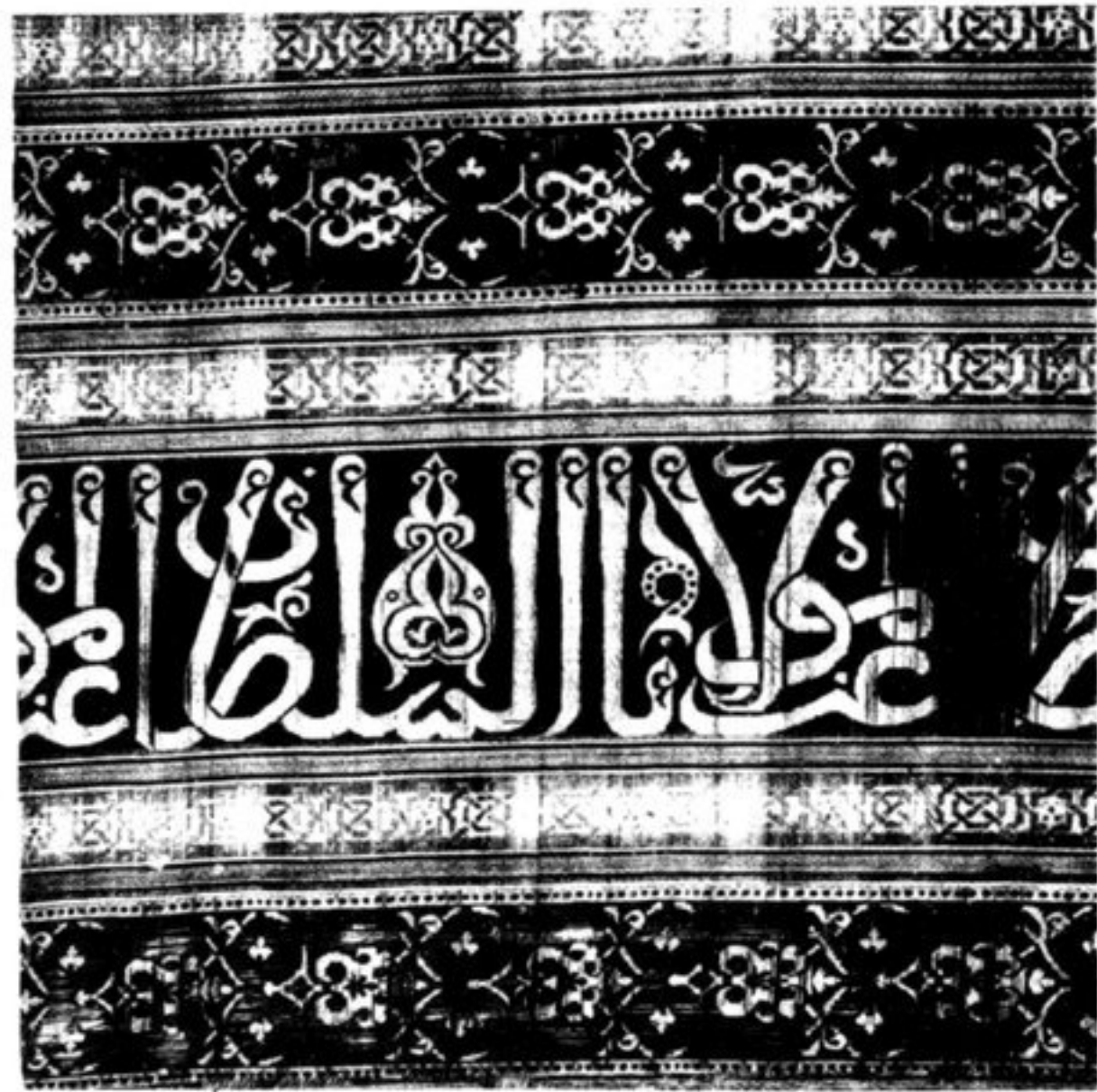


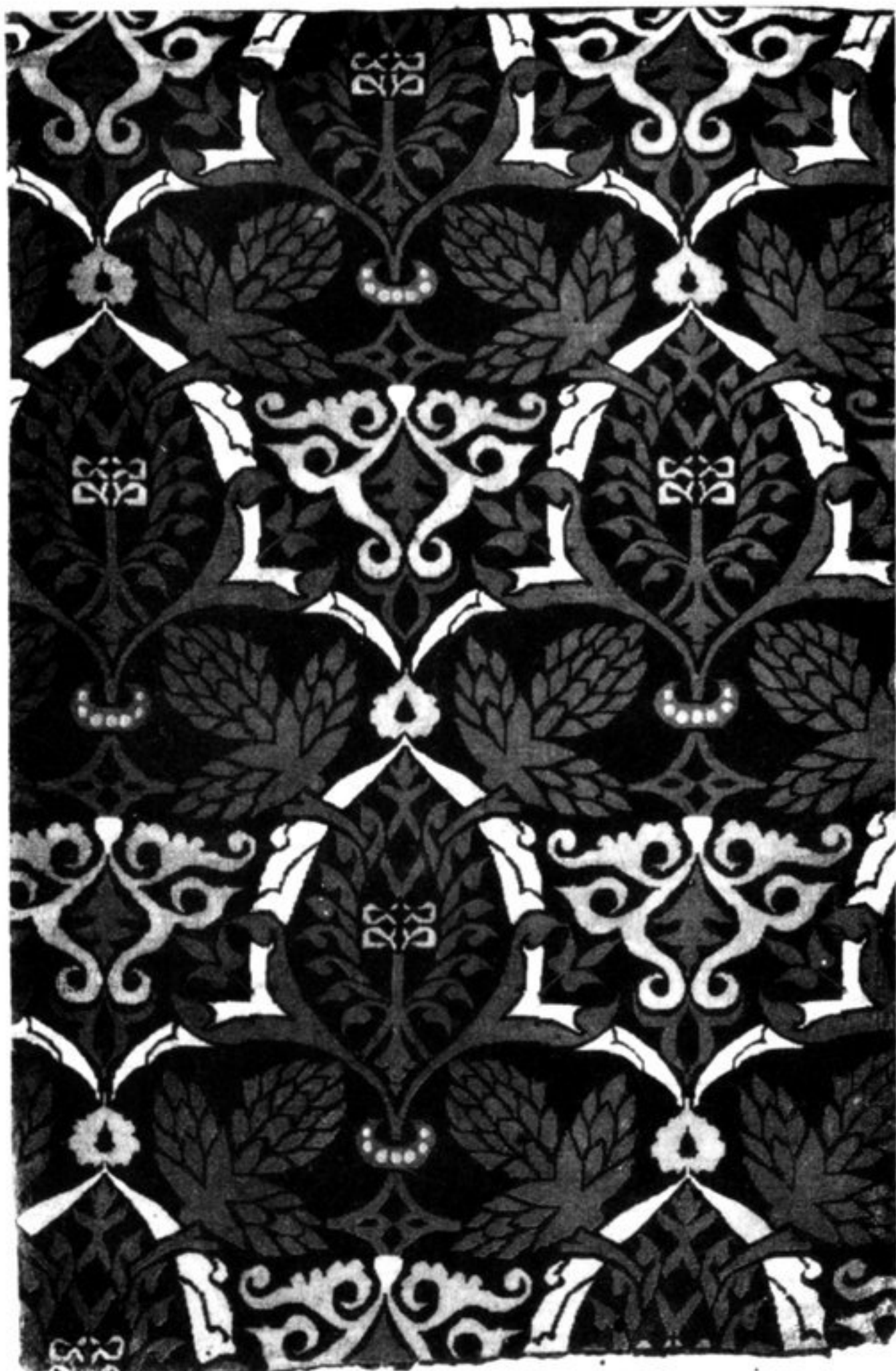
SPANIEN 15. JAHRH.



371



372



373



374

Seidenstoffe maurischen Stils aus Granada.

Abb. 371. Polygonalmuster, Kgm. Berlin. — Abb. 372. Streifenmuster, S. Kensington Museum. — Abb. 373. Arabeskenmuster, Kgm. Berlin. — Abb. 374. Arabesken und Löwen, um 1500. Kgm. Berlin.