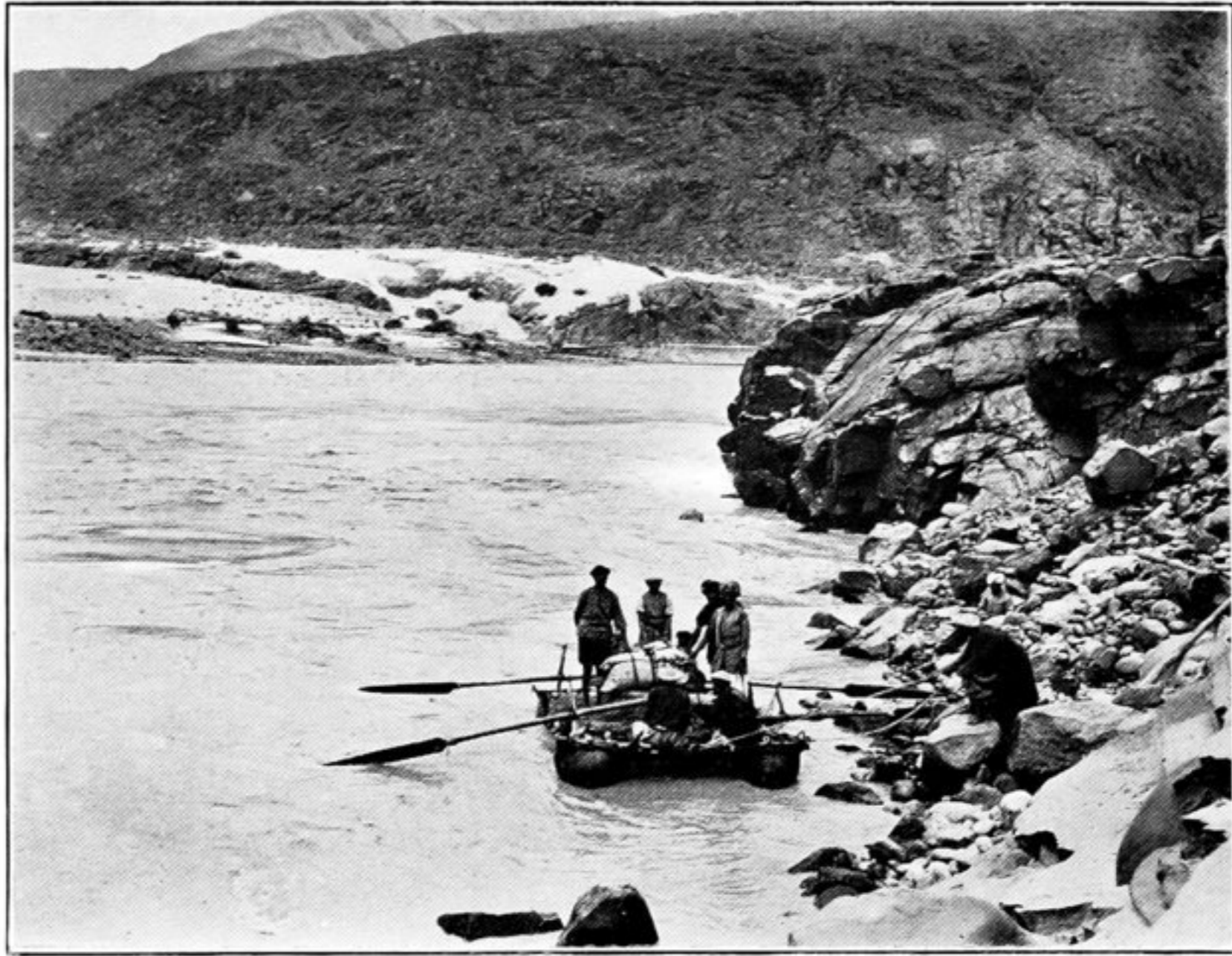


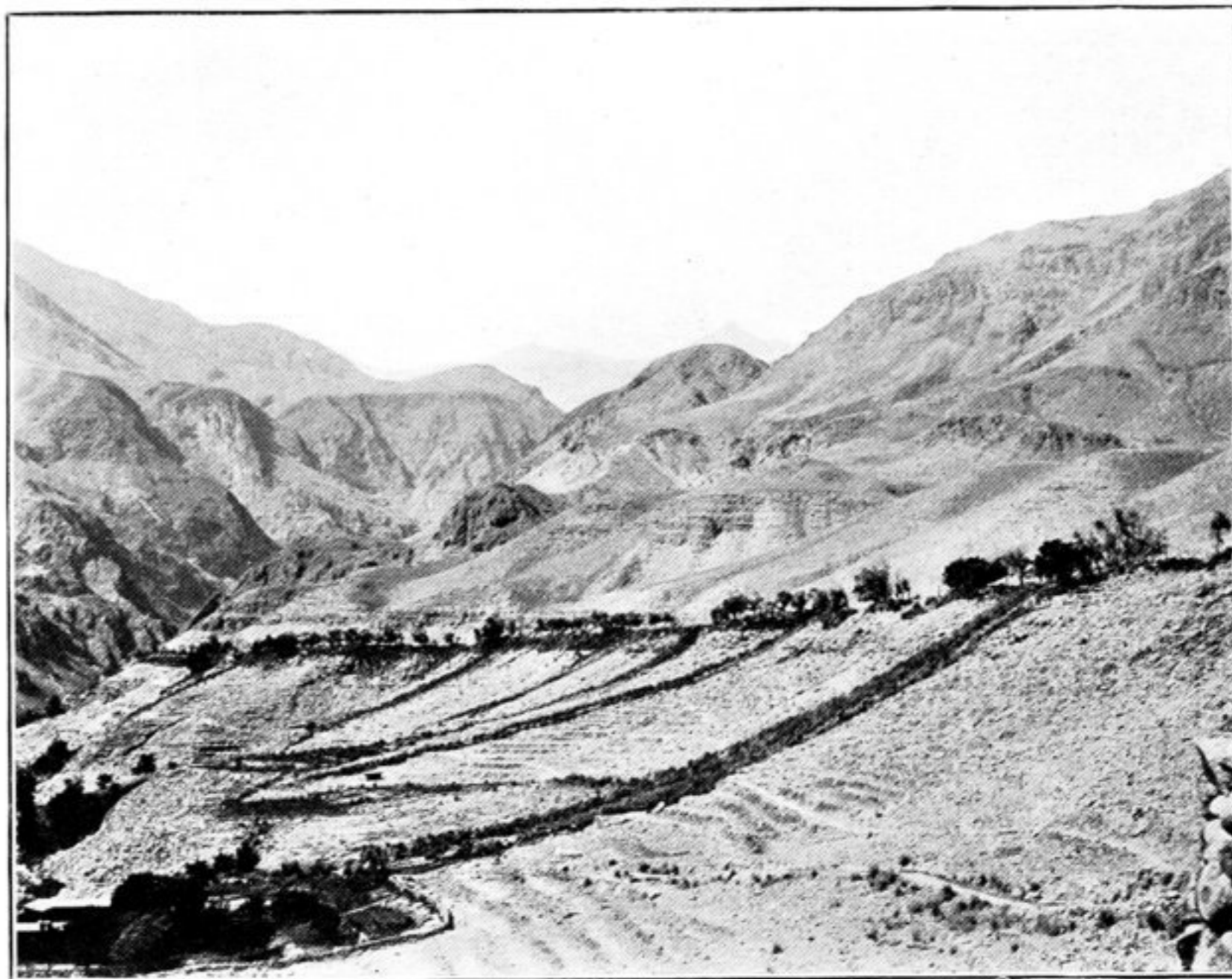
1. VIEW OF KISHANGANGĀ RIVER FROM ABOVE KĒL.



2. CROSSING INDUS FROM RIGHT BANK OPPOSITE MOUTH OF HÖDAR VALLEY.



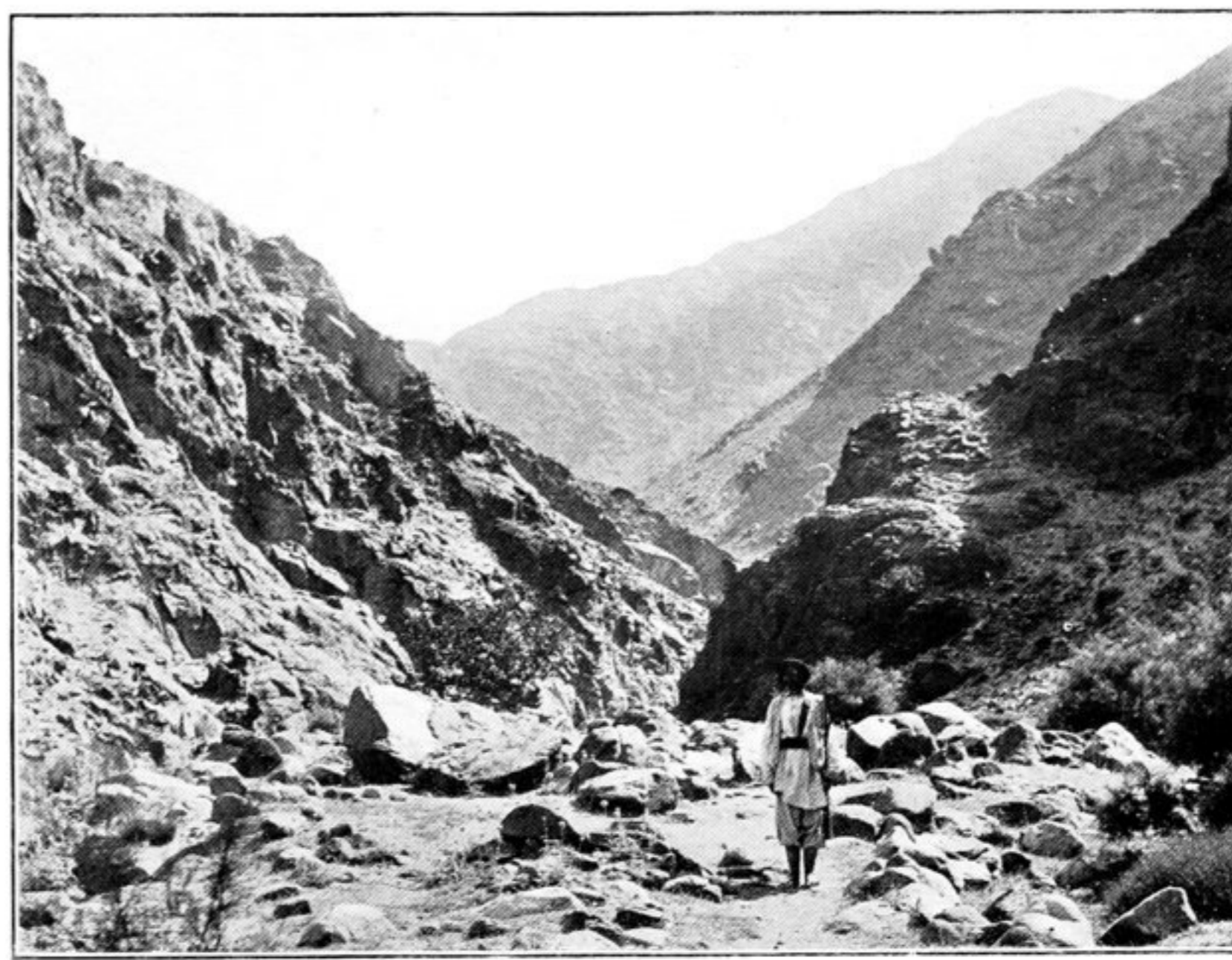
3. VIEW DOWN NIAT VALLEY, NEAR THE, CHILĀS.



4. MOUTH OF BUTO-GĀH VALLEY ABOVE CHILĀS FORT.



5. RUINED SITE OF KĪNO-KŌT AT MOUTH OF HÖDAR VALLEY.



6. VIEW UP HÖDAR VALLEY FROM DĀR HAMLET.