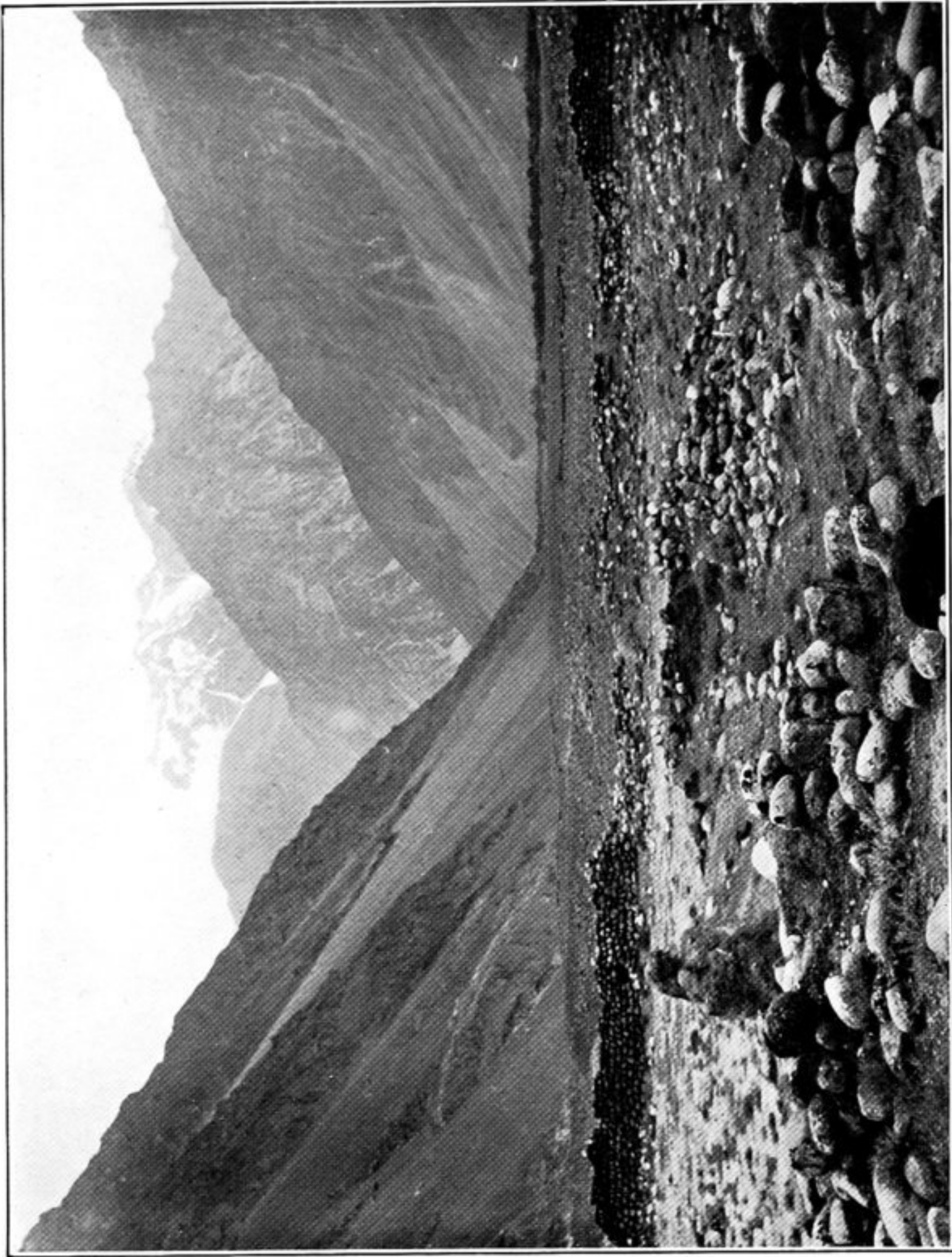
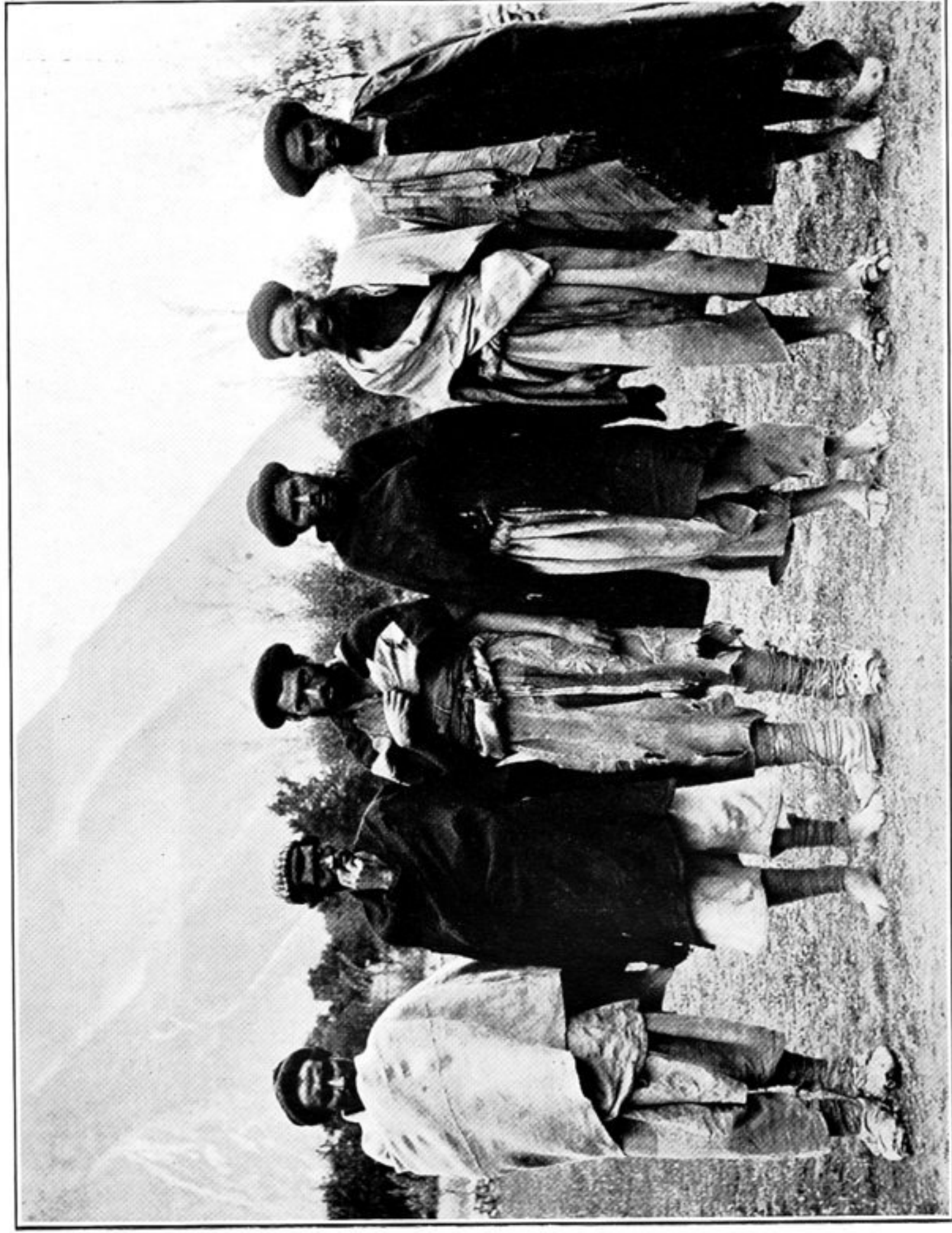


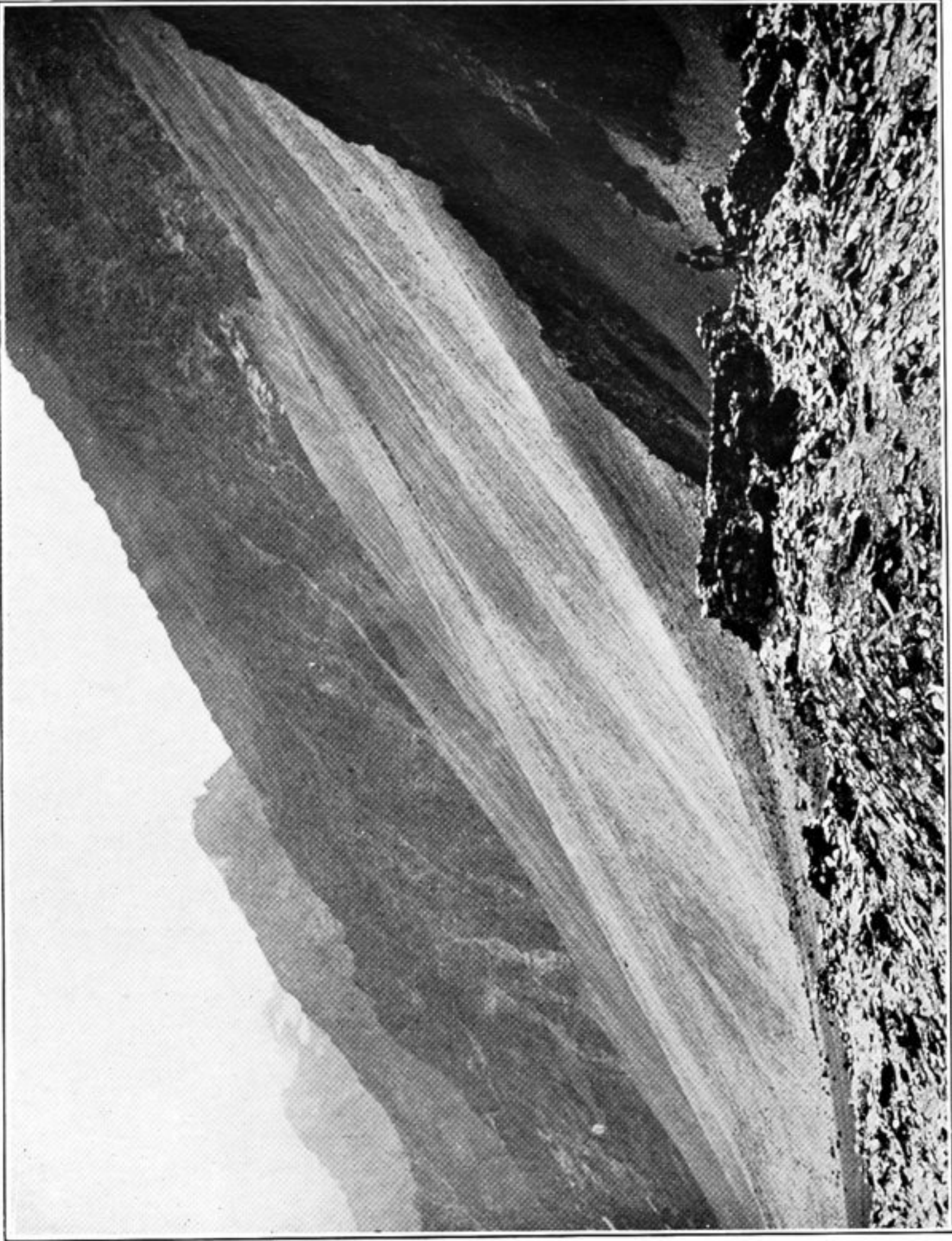
37. JUNCTION OF YASIN AND GHIZAR RIVERS ABOVE GÜPIS.



38. RUINED ENCLOSURE OF BAHRI-KHÂN, DASHT-I-TAUS, WITH VIEW TOWARDS HEAD OF YASIN VALLEY.



39. GROUP OF TANGIRIS AT JAGLÔT.



40. RUINED FORT OF CHUMARKHAN, YASIN.