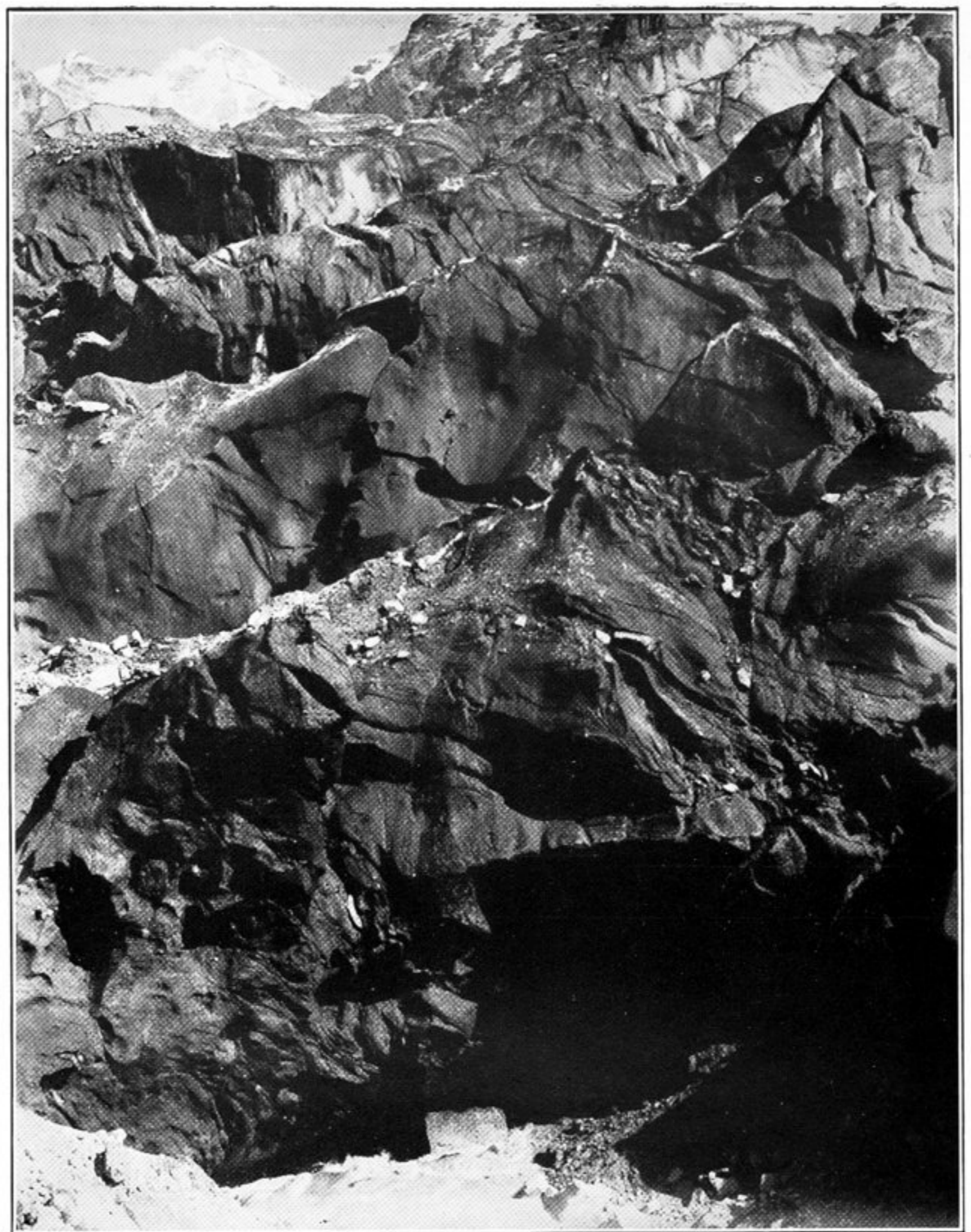


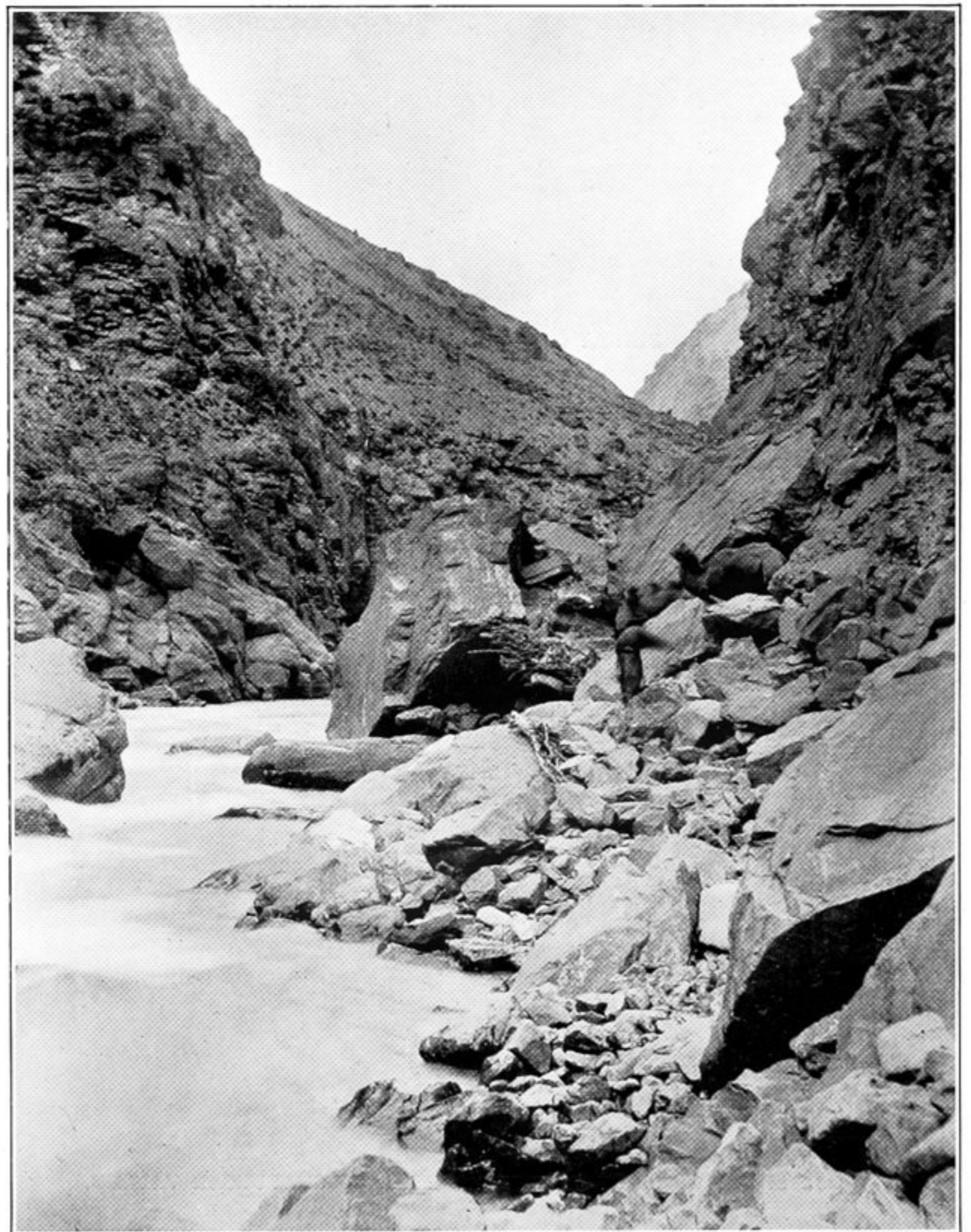
52. TERMINAL PORTION OF CHILLINJI GLACIER SEEN ACROSS KARAMBÄR RIVER.



53. GLACIER PUSHED ACROSS KARAMBÄR RIVER BELOW SHUIYENJ.



54. BRIDGE AND 'RAFİK' ON KARA-TÄSH RIVER AT BAKUCHAK



55. CAMELS DESCENDING KARA-TÄSH RIVER GORGE AT ARA-SÜNDE.