



56. VIEW EASTWARDS ACROSS LAKE FED BY EASTERN BRANCH OF KARAMBĀR GLACIER.



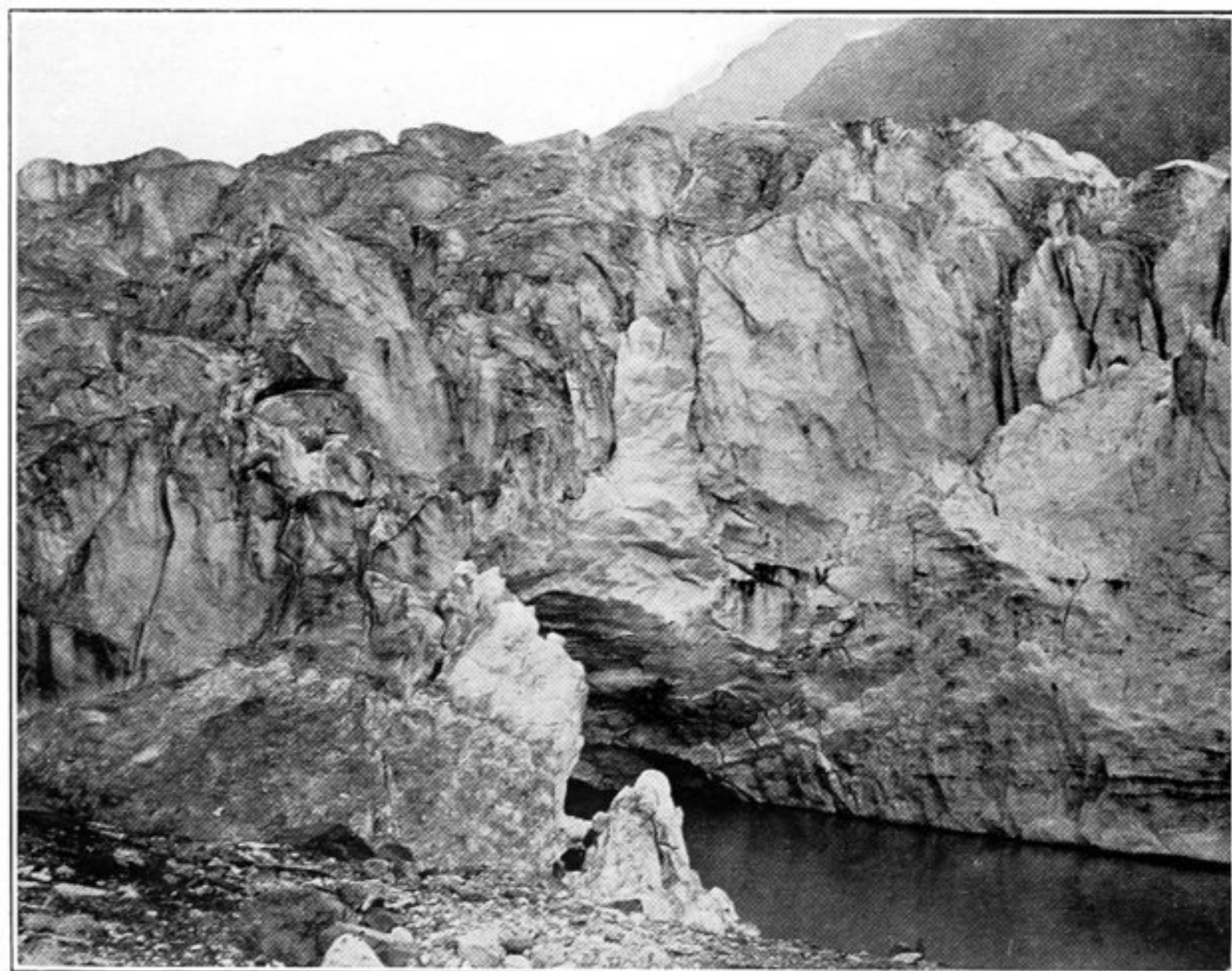
57. ROUTE OF ASCENT TO CHILLINJI PASS.
Pass, about 17,500 feet above sea-level, marked by arrow.



58. ZIĀRAT OF BĀBA-GHUNDI, CHAPURSAN.



59. FORT VILLAGE OF RĒSHIT, CHAPURSAN VALLEY.



60. SNOUT OF KHŪZ GLACIER AT HEAD OF CHAPURSAN VALLEY.



61. SNOUT OF GLACIER EAST OF CHILLINJI PASS, ABOVE BUATTAR.