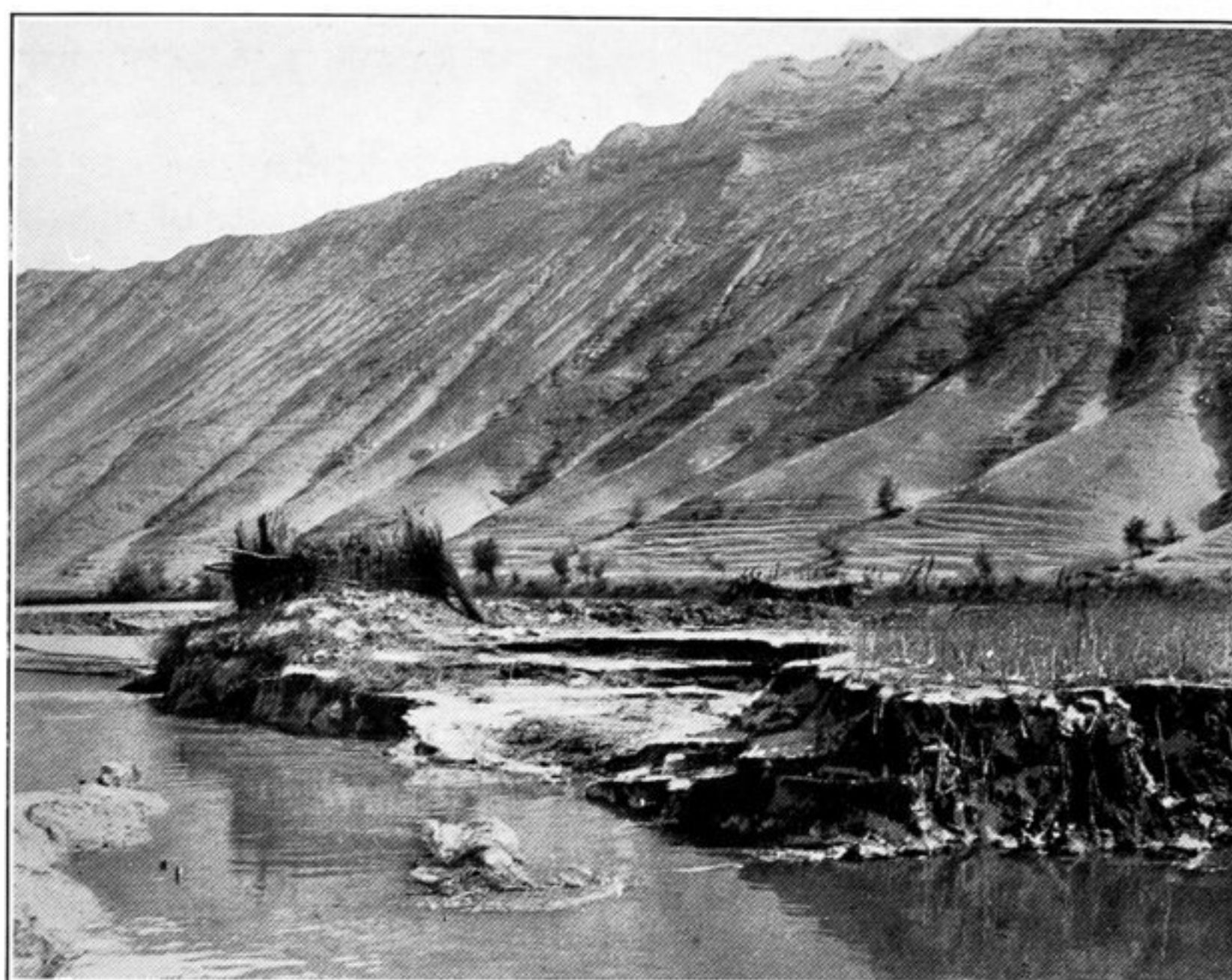


78. OUTER HILL RANGE OF T'IEN-SHAN SEEN FROM ROUTE TO VILVIL.



79. ON YÄRKAND RIVER BELOW NORTHERN OFFSHOOT OF CHOK-TÄGH.

ii

i

iii



80. RUINS AT LÄL-TÄGH SITE, NORTH-EAST OF MARÄL-BÄSHI.