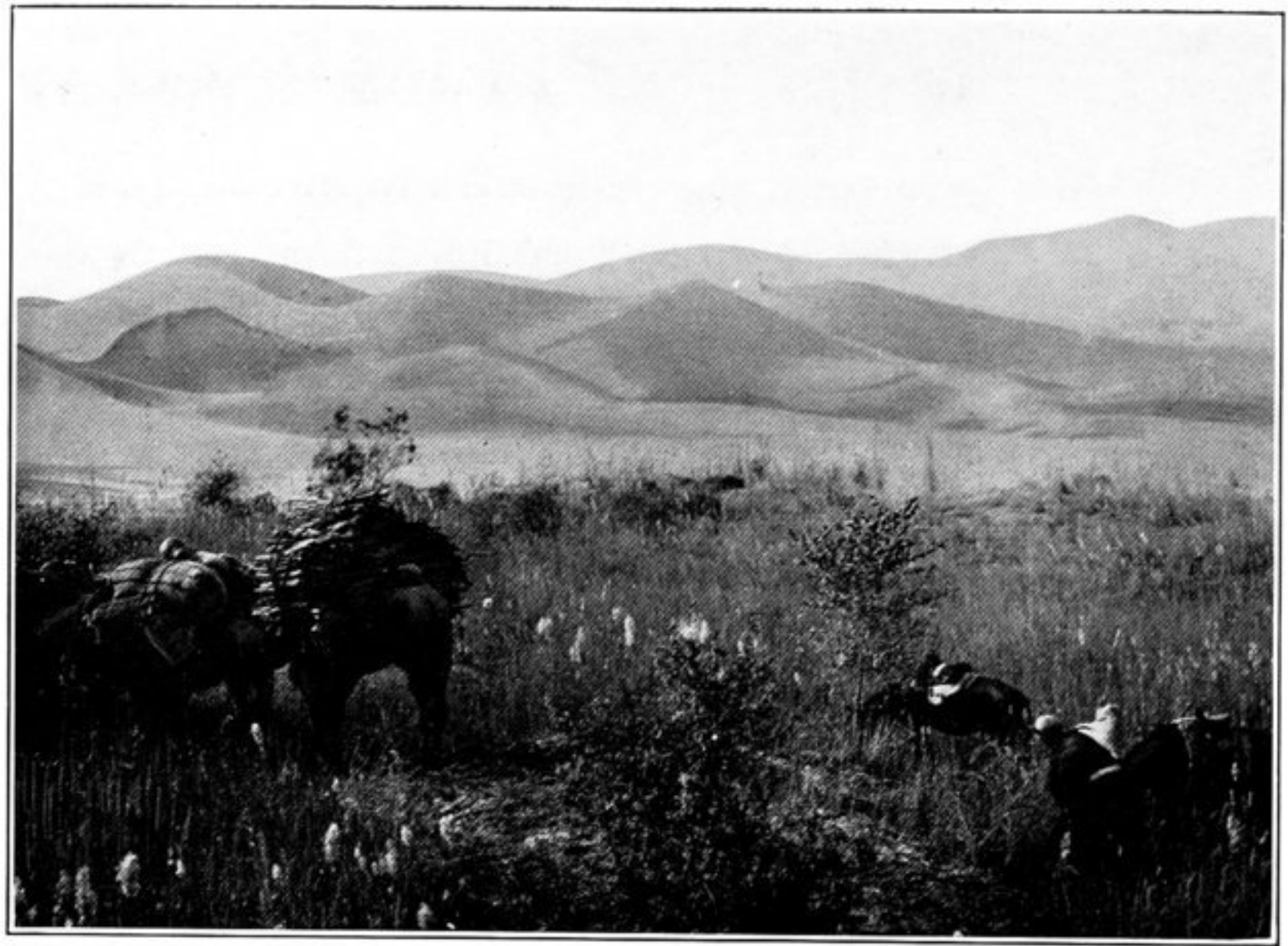
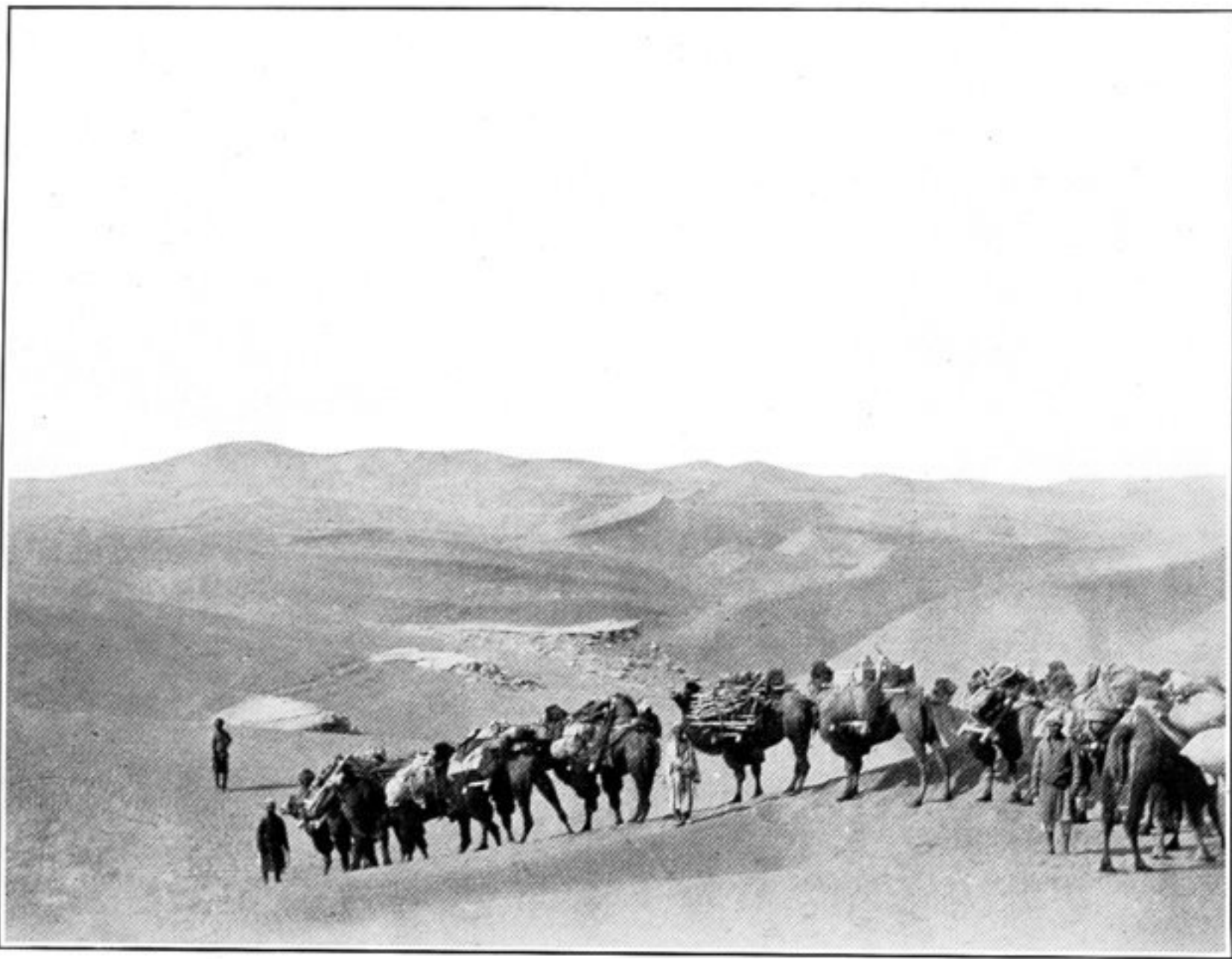




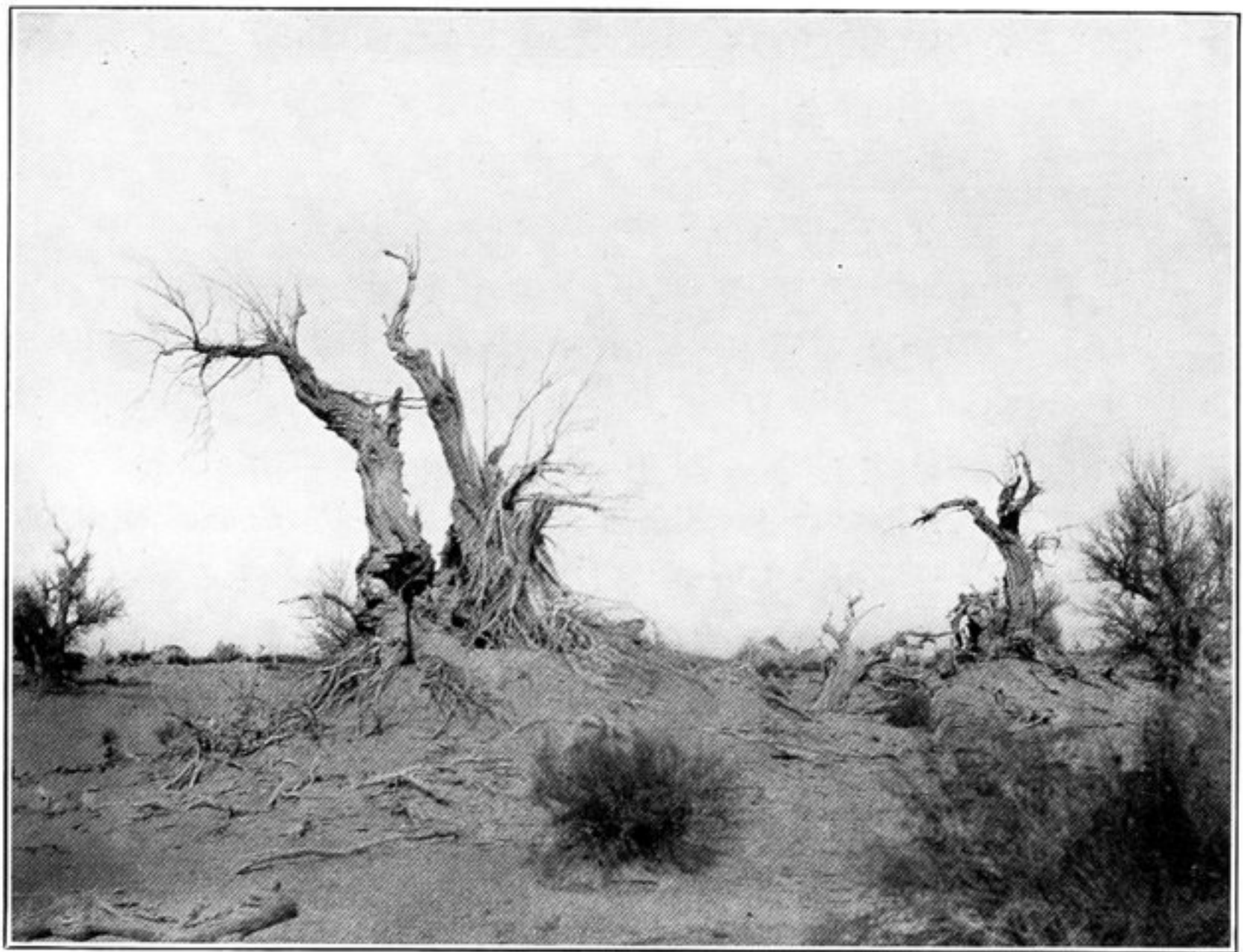
81. VIEW TOWARDS MAZĀR-TĀGH FROM ACROSS YĀRKAND RIVER.



82. DUNES OVER NORTH END OF KUM-TĀGH, SEEN FROM SHORE OF CHÖL-KÖL.



83. HIGH SAND RIDGES BETWEEN CAMPS XXVII-XXVIII, TAKLAMAKĀN.



84. LIVING AND DEAD TAMARISKS IN RIVERINE JUNGLE OF KARA-KÖL.



85. MARKET TRAFFIC ON ROAD TO MARĀL-BĀSHI.



86. KĀSĪM ĀKHŪN, AZĪZ PĀWĀN, AND TOKHTA-ĀKHŪN.  
(See pp. 82 sq., 93.)