

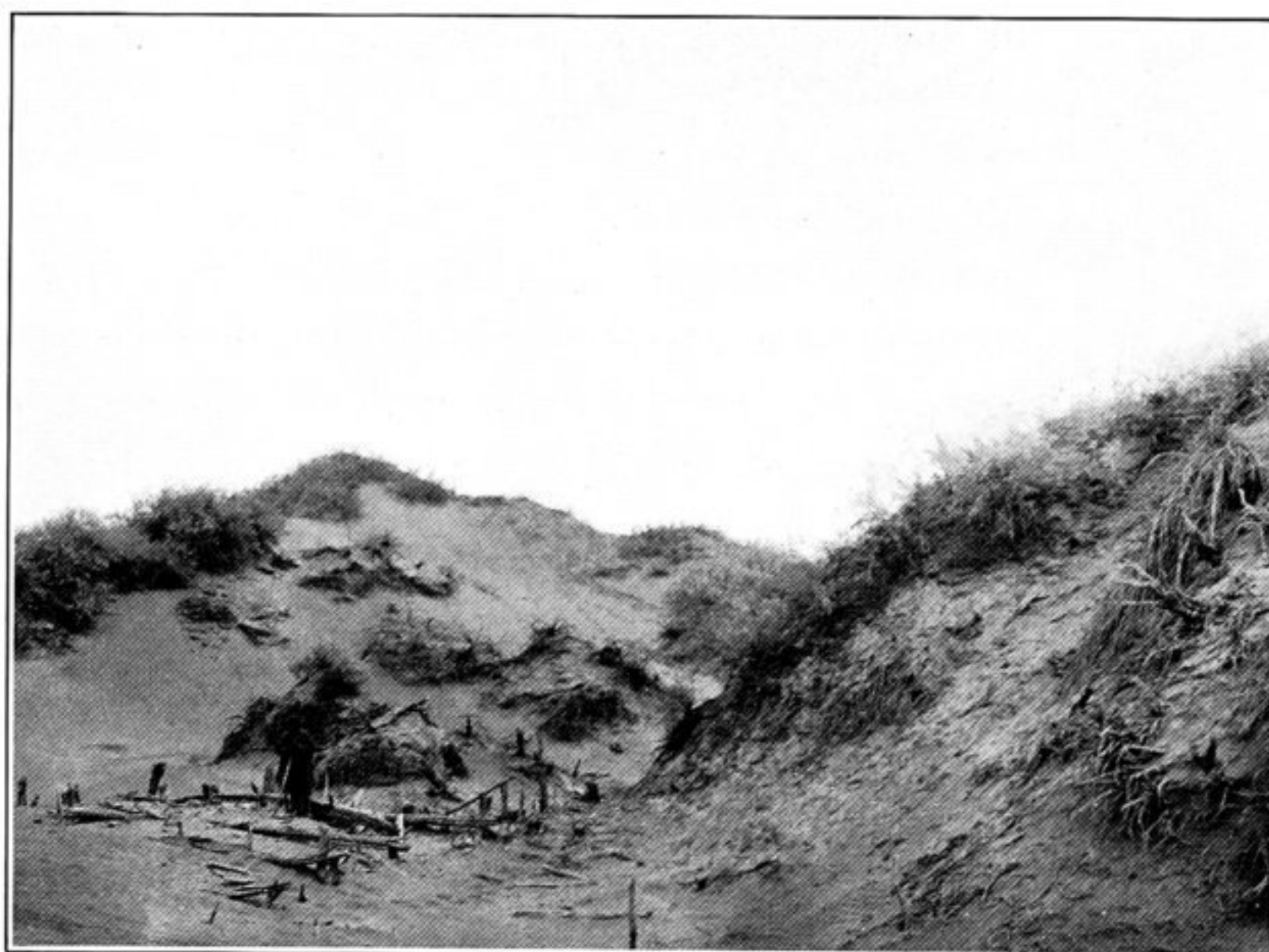
91. DEBRIS HEAP MARKING RUINED SHRINE BELOW MAZĀR-TĀGH FORT.



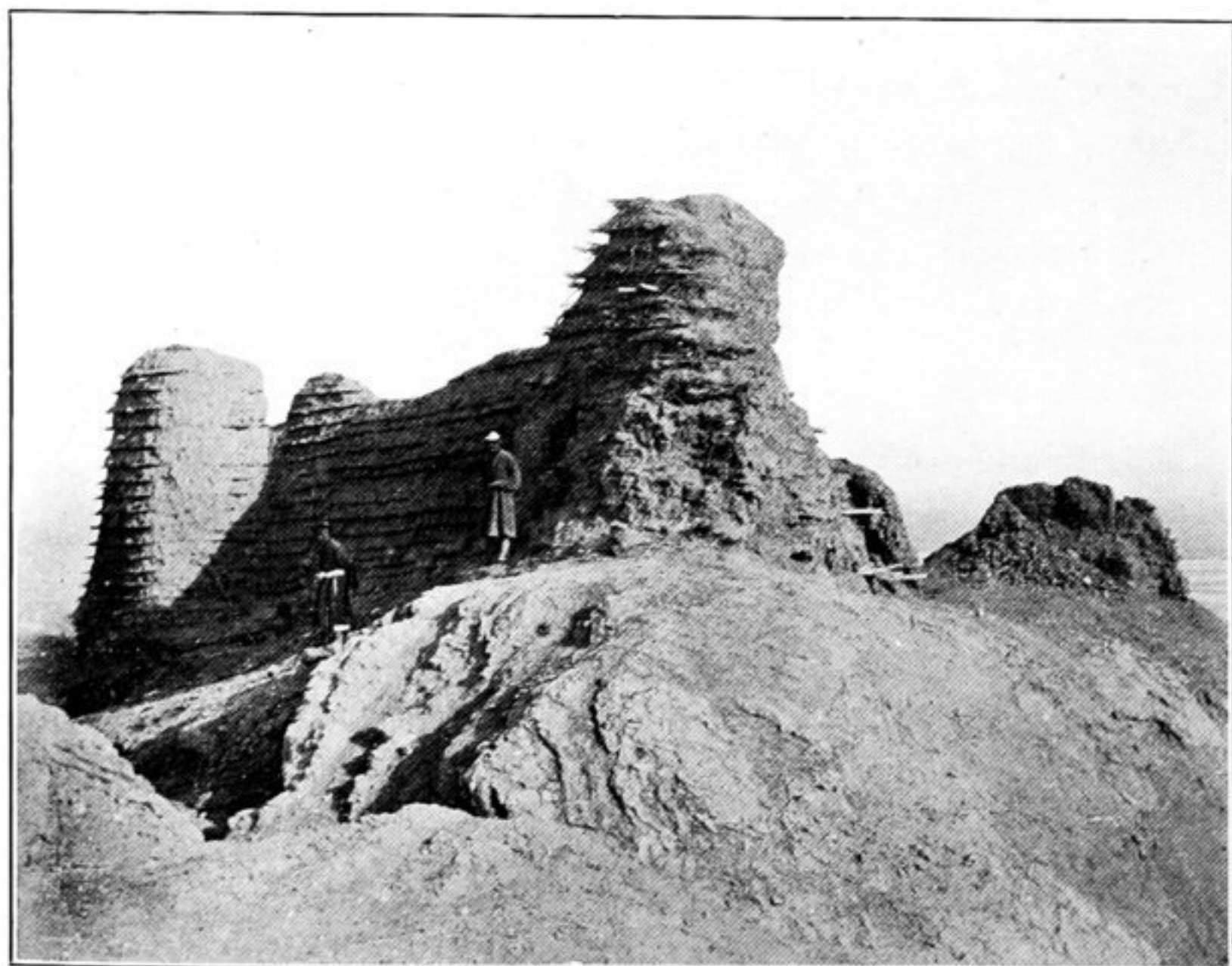
92. CREST OF MAZĀR-TĀGH HILL CHAIN, LOOKING NORTH-WEST FROM RUINED FORT.



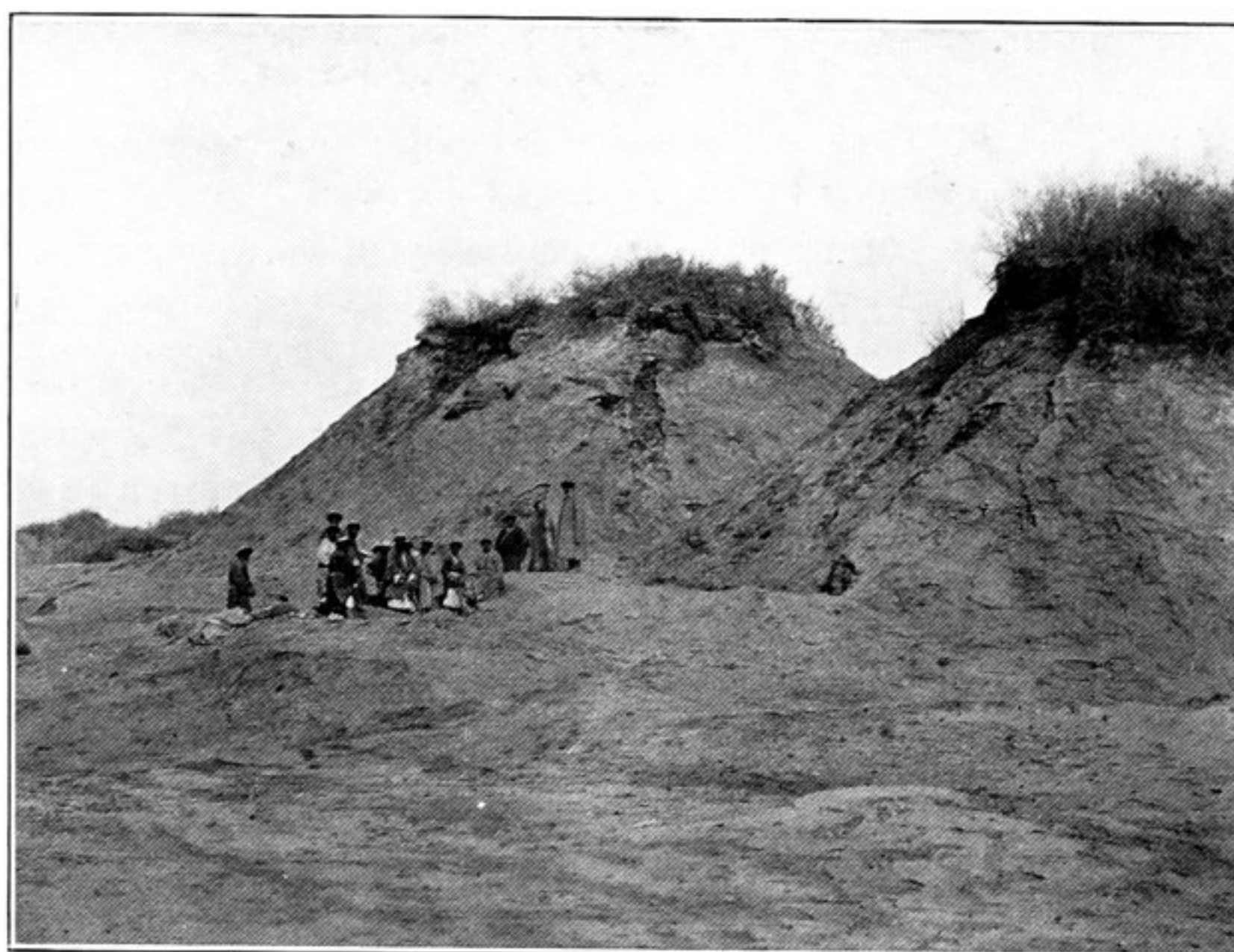
93. DEAD POPLARS AND SAND-BURIED STRUCTURE, N. XLIV, NIYA SITE.



94. RUINED DWELLING, N. XLIII, NIYA SITE, BETWEEN TAMARISK-CONES, BEFORE EXCAVATION



95. FORT ON MAZĀR-TĀGH HILL, SEEN FROM NORTH-WEST.  
(See p. 92.)



96. SITE OF RUINED SHRINE BELOW TAMARISK-CONES, KUDUK-KÖL.