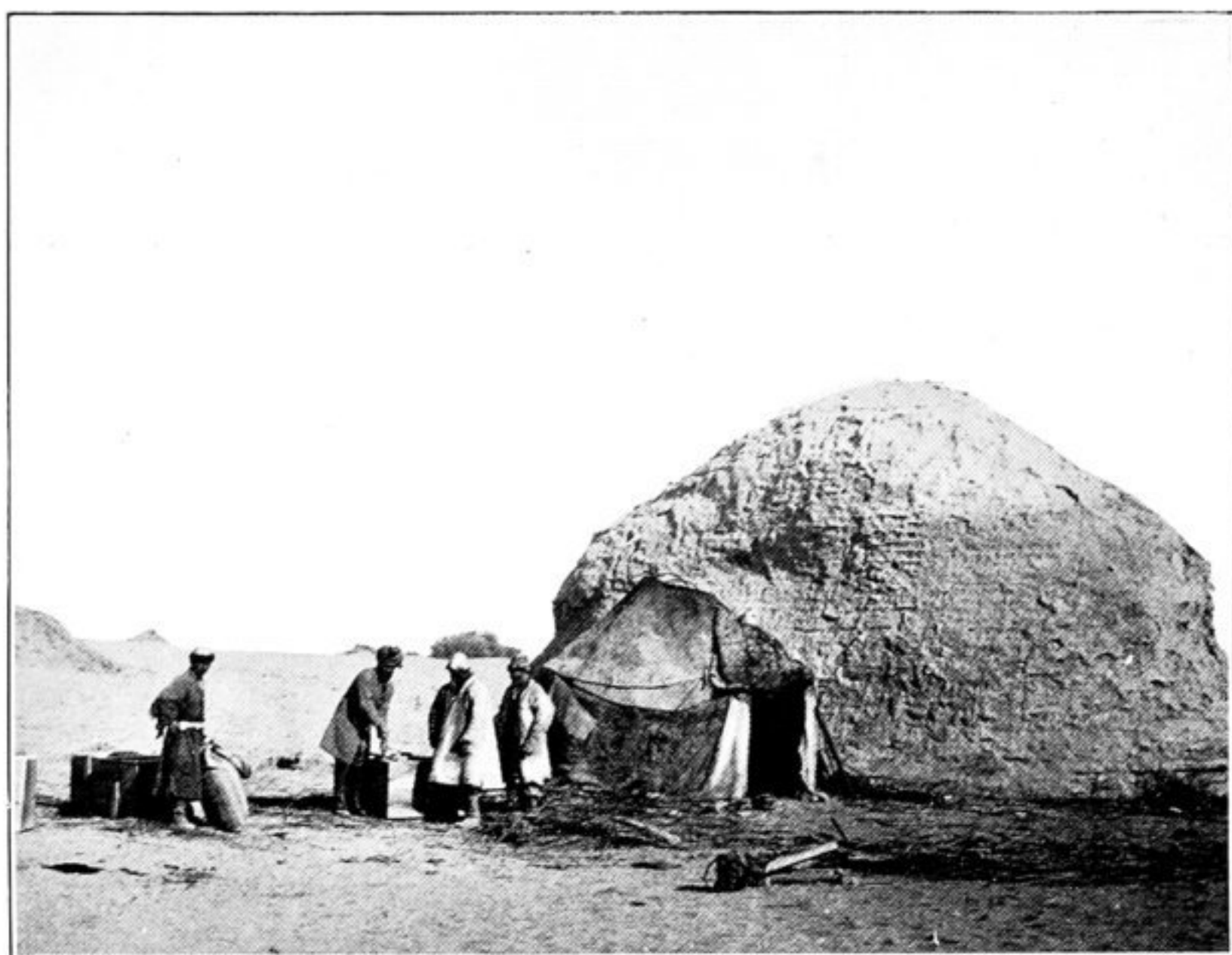




106. MEN OF VĀSH-SHAHRI GUARDING ROUTE FROM CHARCHAN.  
(See p. 159.)



107. REMAINS OF SHRINE OR STŪPA AT BĀSH-KOYUMAL, SEEN FROM NORTH-WEST.



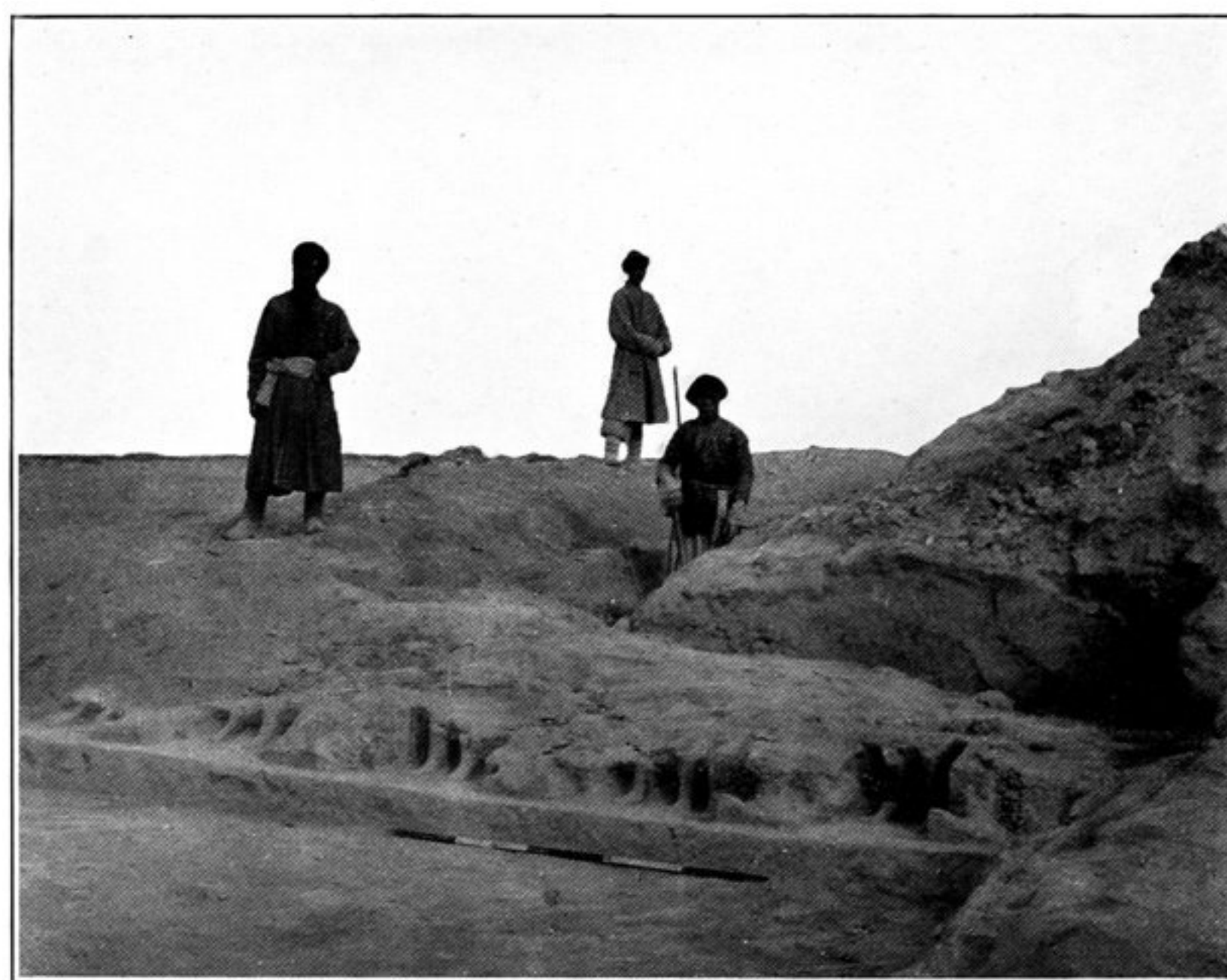
108. PACKING OF FRESCO PANELS FROM SHRINE M. V., MĪRĀN SITE.  
Ruined Stūpa M. VI in background.



109. WALL NEAR CENTRE OF ENCLOSURE, BĀSH-KOYUMAL.



110. MEN REMOVING FRESCO PANELS FROM WALL OF SHRINE M. V,  
MĪRĀN SITE.



111. REMAINS OF RELIEVOS IN CHAPEL AT FOOT OF STŪPA, KOYUMAL.