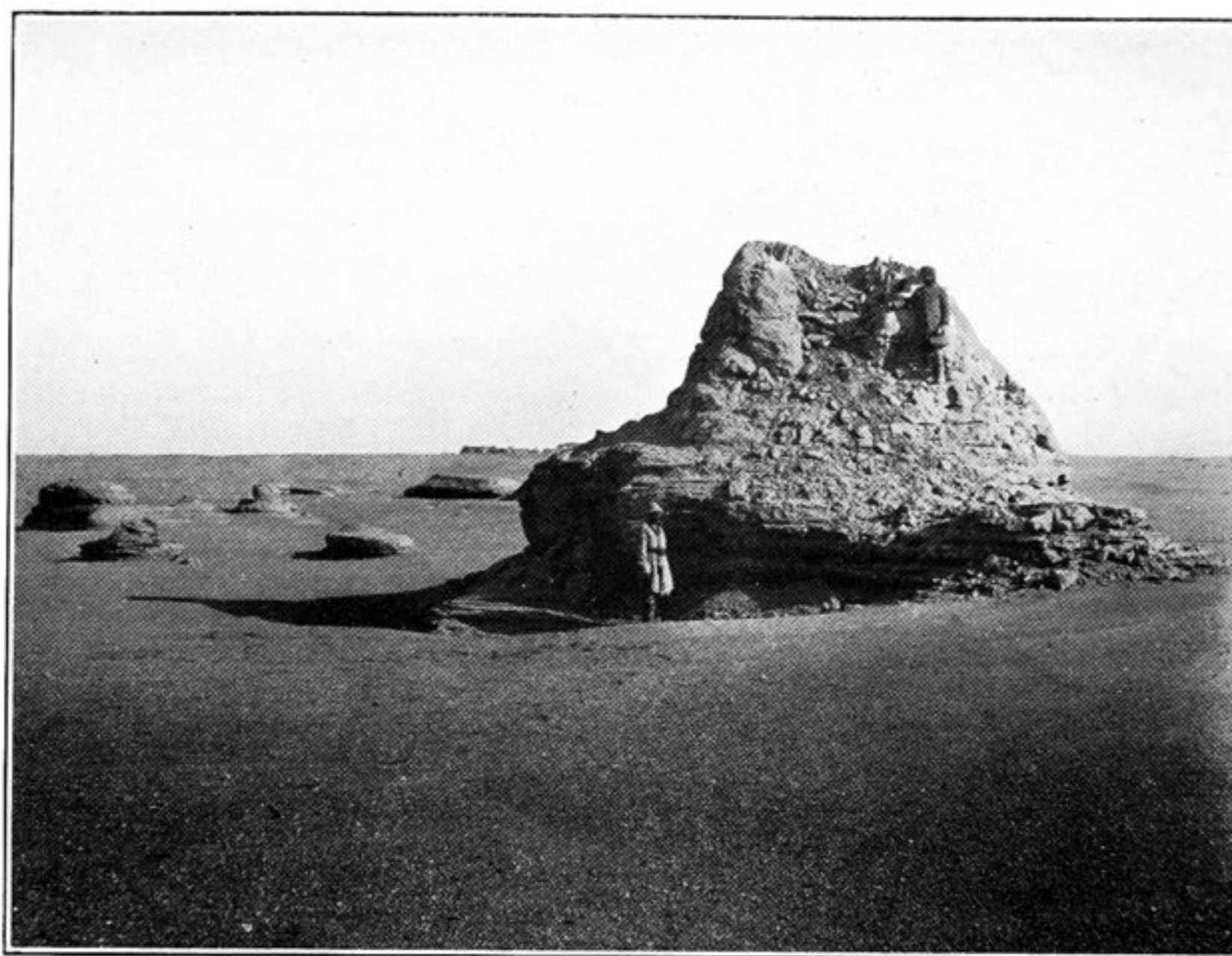
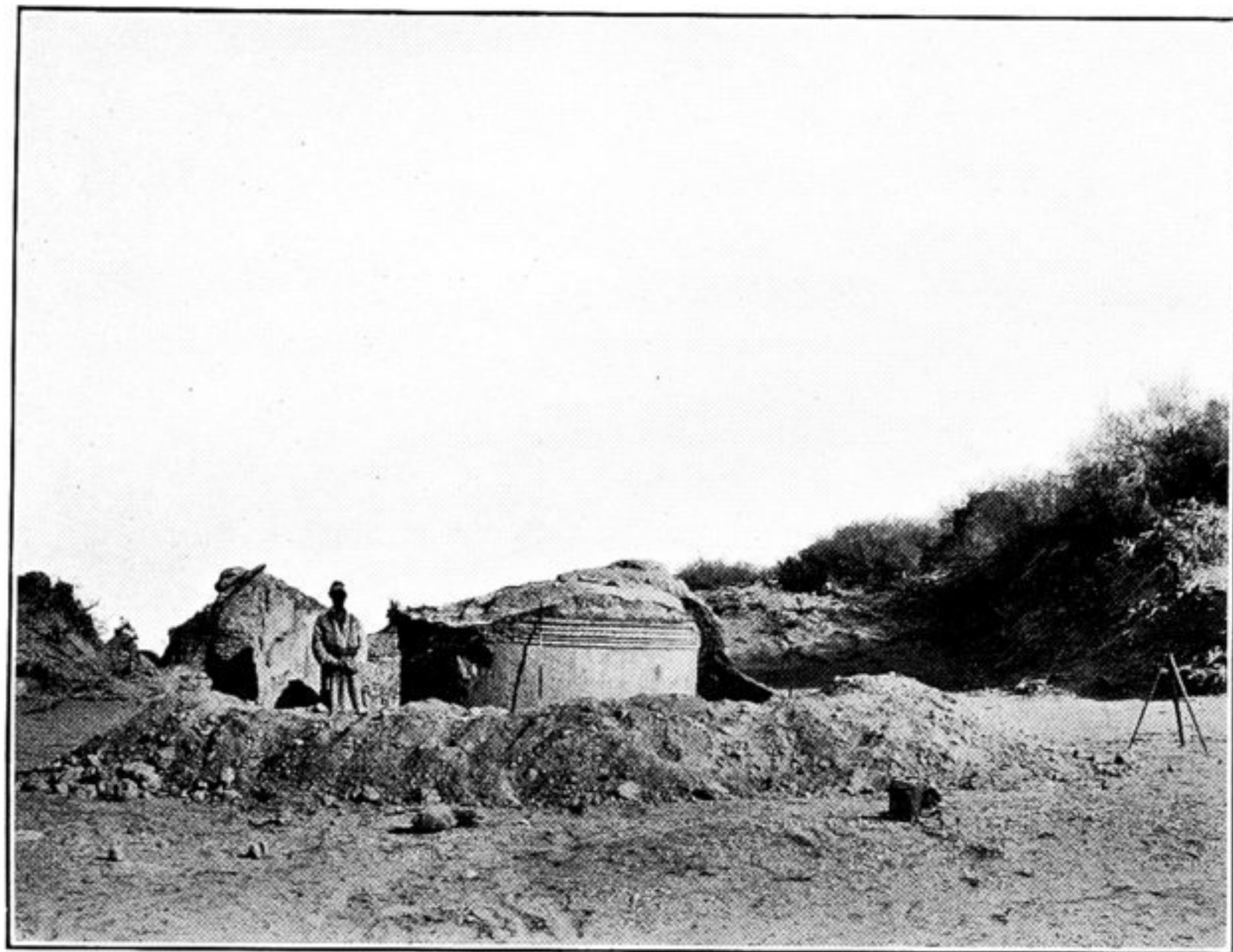




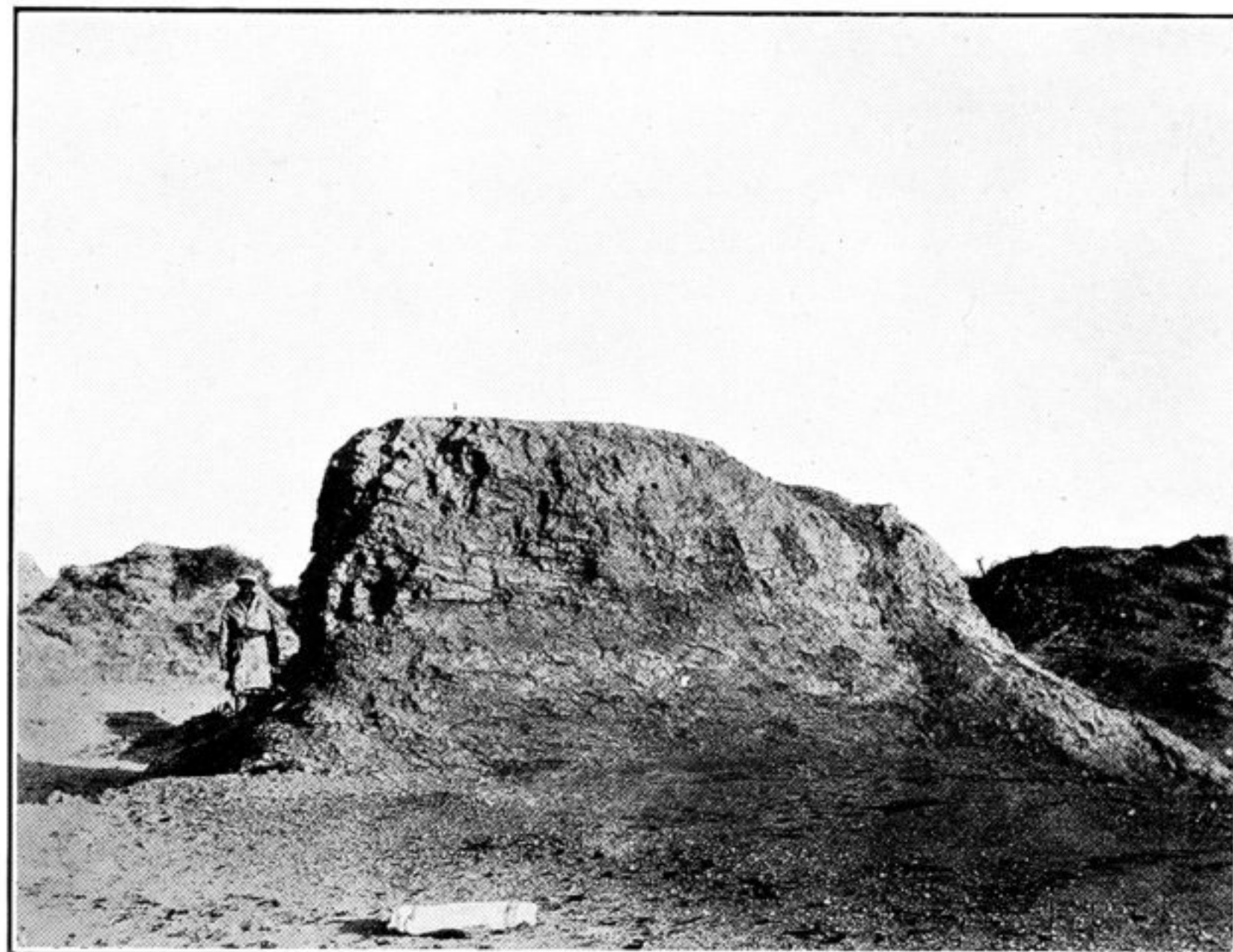
116. REMAINS OF SHRINE M. IV, MĪRĀN SITE, SEEN FROM WEST.
(See *Serindia*, i. p. 533.)



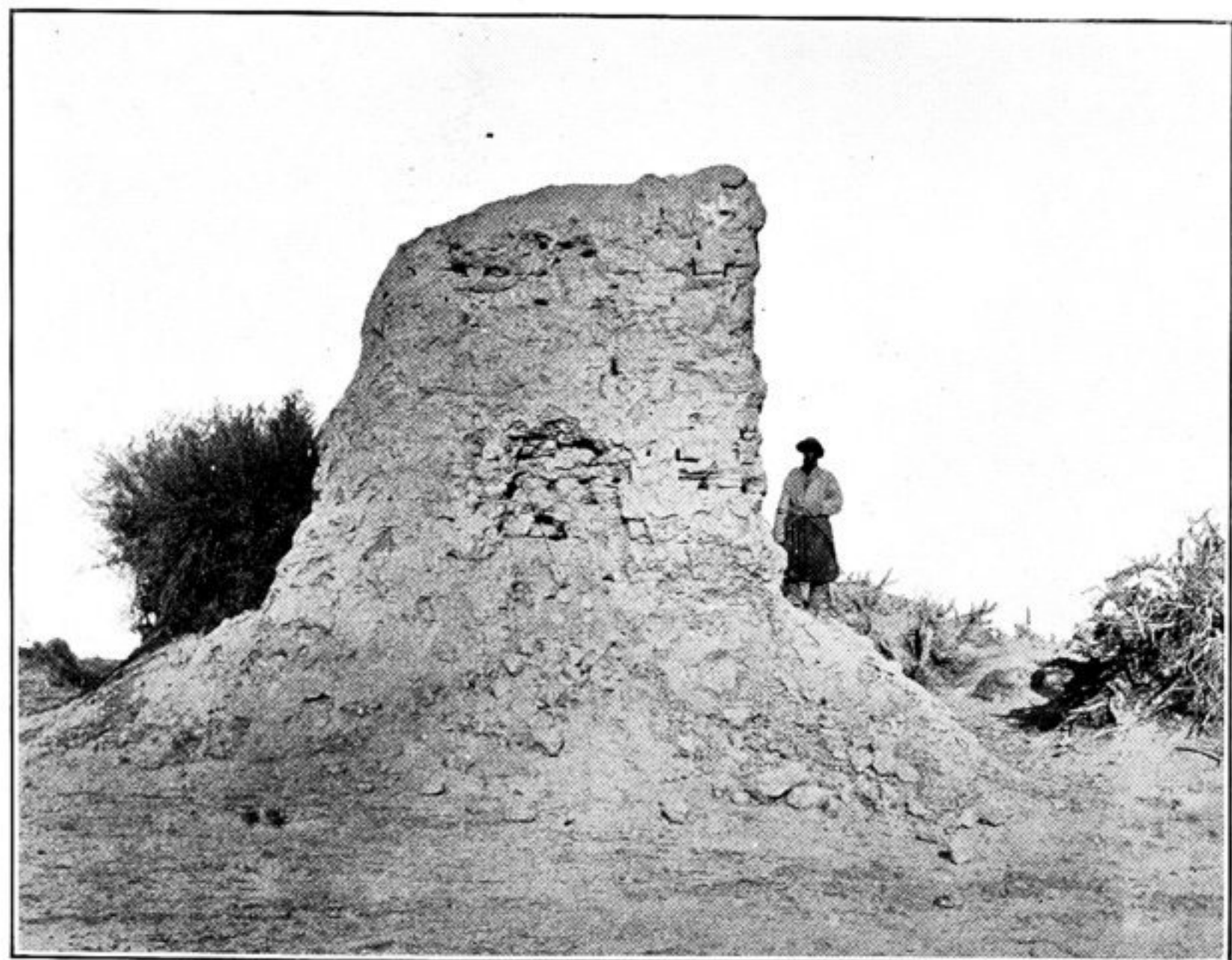
117. RUINED STRUCTURE, M. IX, ON WIND-ERODED TERRACE, MĪRĀN SITE.
(See *Serindia*, i. p. 534.)



118. RUINED SHRINE, M. XIV, MĪRĀN SITE, AFTER EXCAVATION.



119. MOUND CONTAINING REMAINS OF COLLAPSED SHRINE, M. XV, MĪRĀN SITE.



120. RUINED TOWER, M. XIII, MĪRĀN SITE, SEEN FROM SOUTH.



121. SHĒR 'ALĪ KHĀN, BAJAURI TRADER, WITH TWO TRAVEL COMPANIONS.