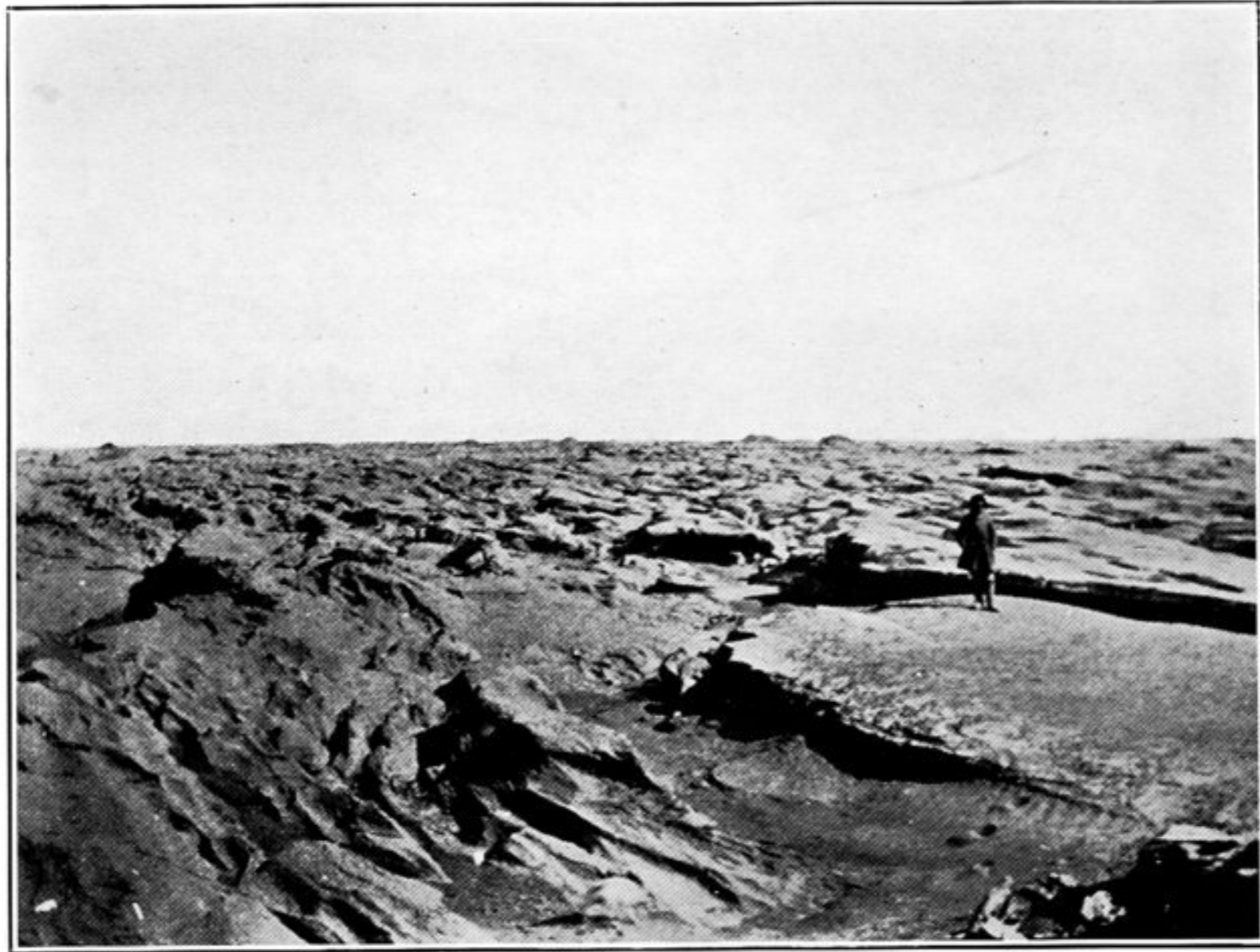
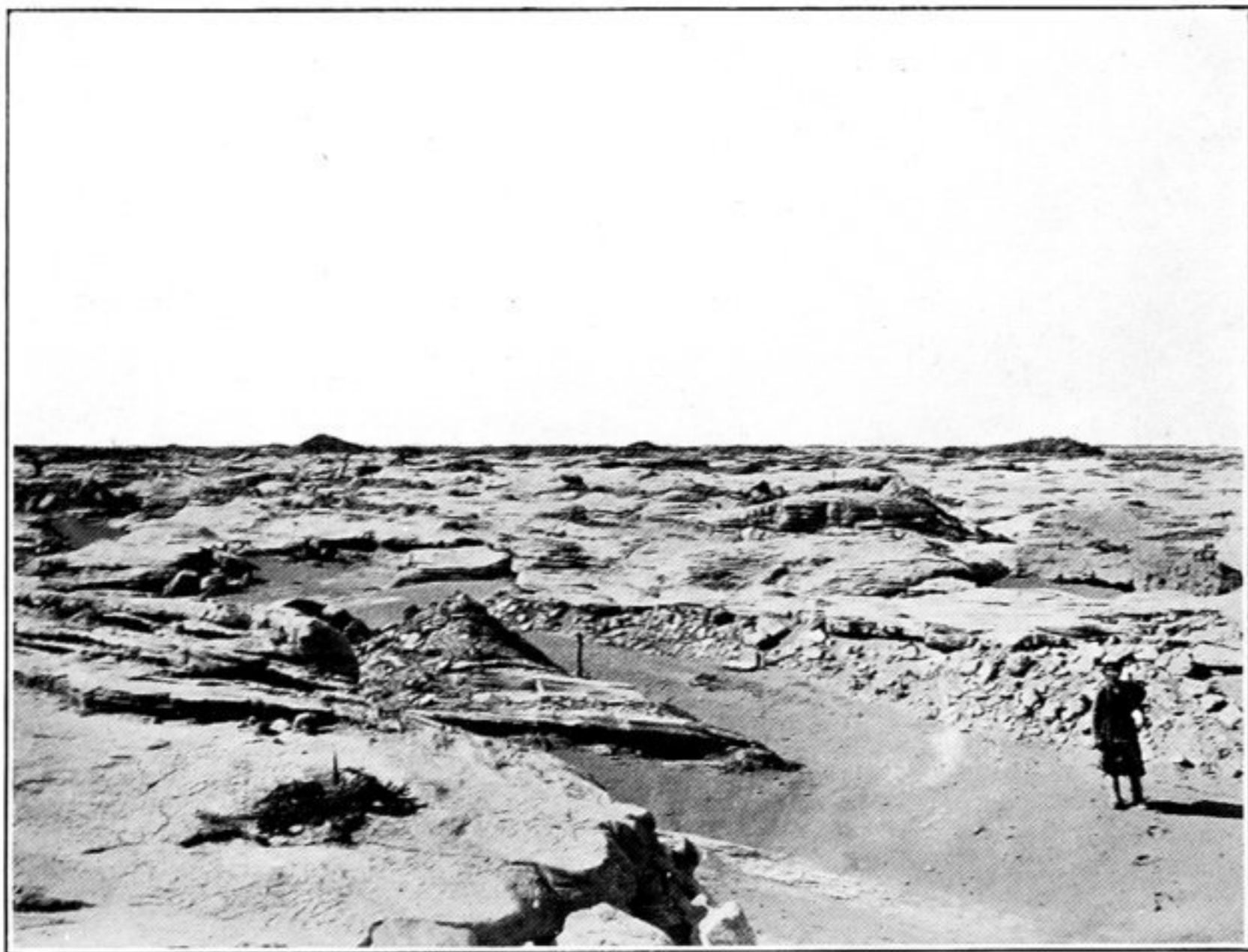




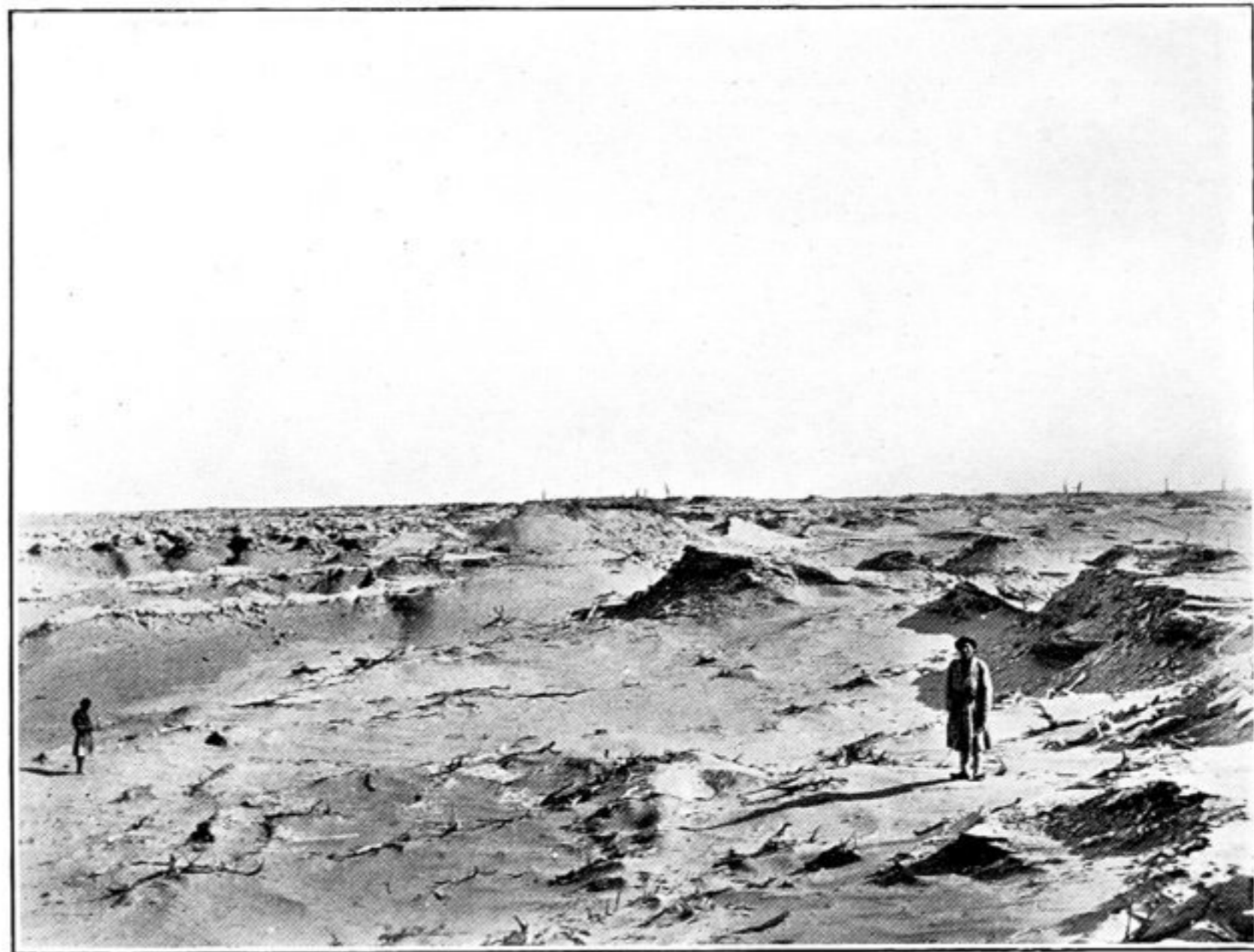
140. CAMELS CROSSING WIND-ERODED GROUND, ABOUT 13 MILES NORTH-EAST OF CAMP XCII.



141. YÄRDANG RIDGES AND TRENCHES, ABOUT 8½ MILES NORTH-EAST OF CAMP XCIII.



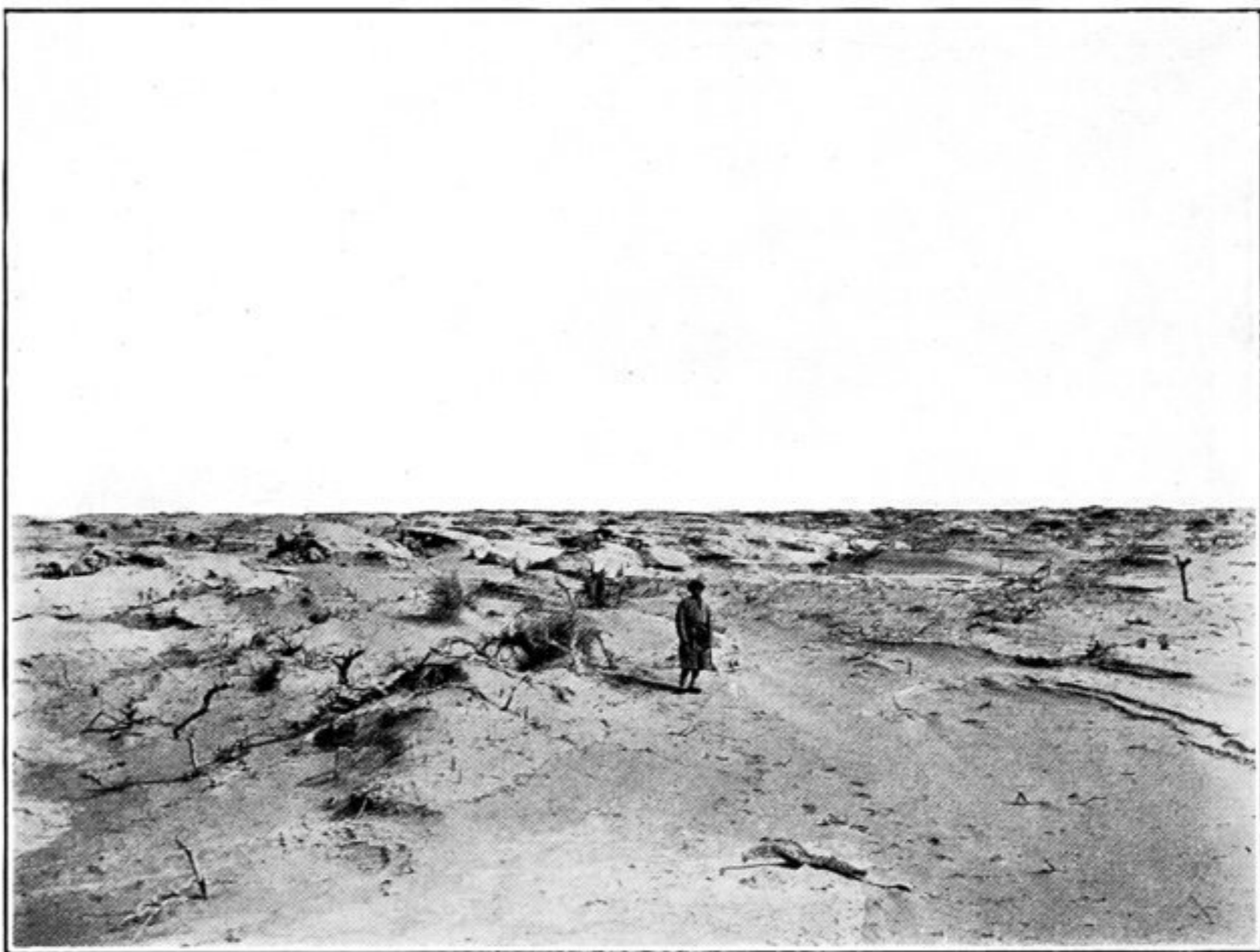
142. VIEW TO SOUTH-WEST ACROSS ERODED GROUND BEYOND CAMP XCIII.



143. DEPRESSION MARKING ANCIENT RIVER-BED ABOUT 7 MILES NORTH-EAST OF CAMP XCIII.



144. ANCIENT RIVER-BED BETWEEN LINES OF TAMARISK-CONES ABOUT 7 MILES SOUTH OF L.A. STATION, LOP DESERT.



145. ANCIENT WATER-COURSE WITH LIVING TAMARISKS NEAR L.D. SITE, LOP DESERT.