



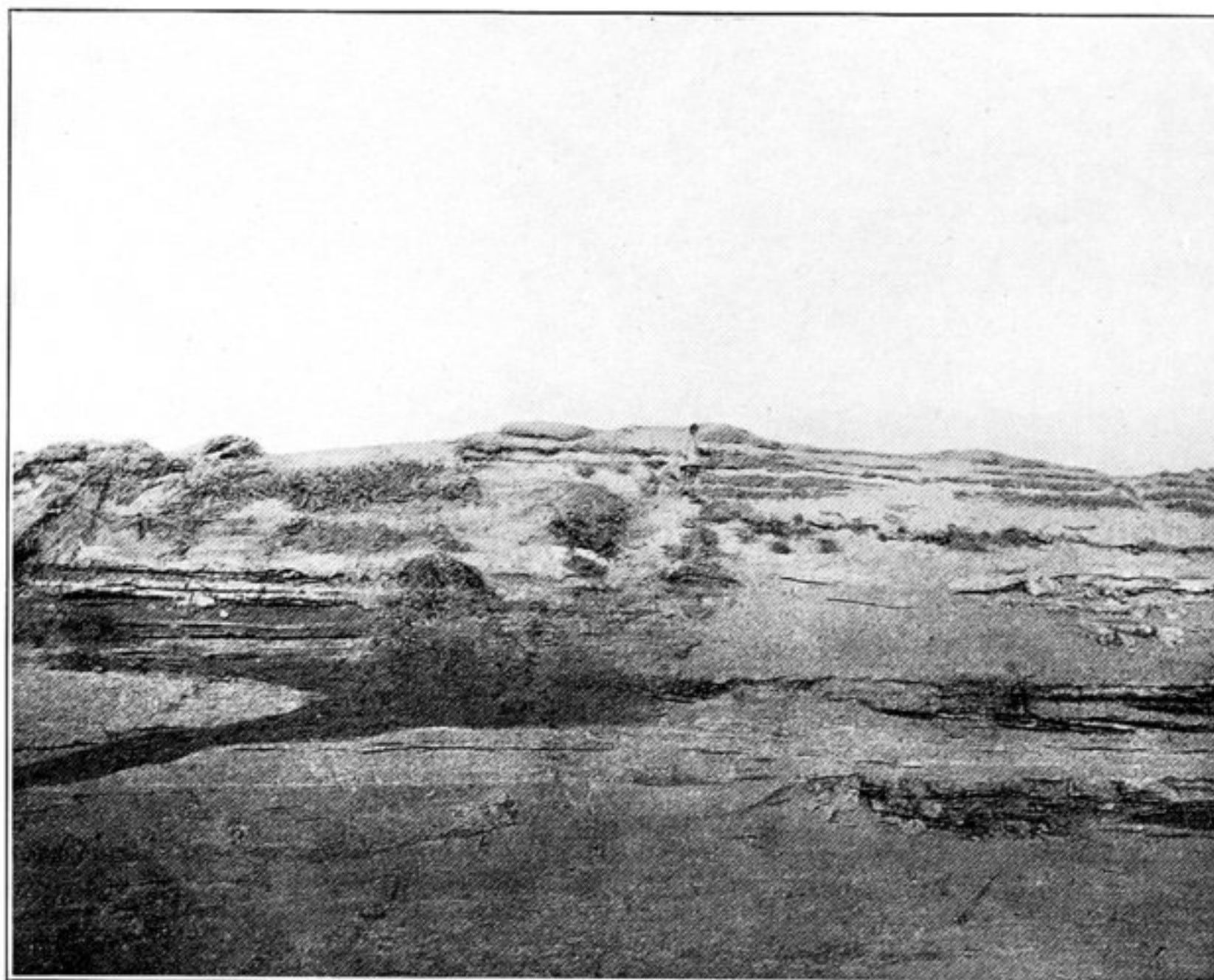
158. WESTERN PORTION OF MESA L.C., SEEN FROM SOUTH-EAST.



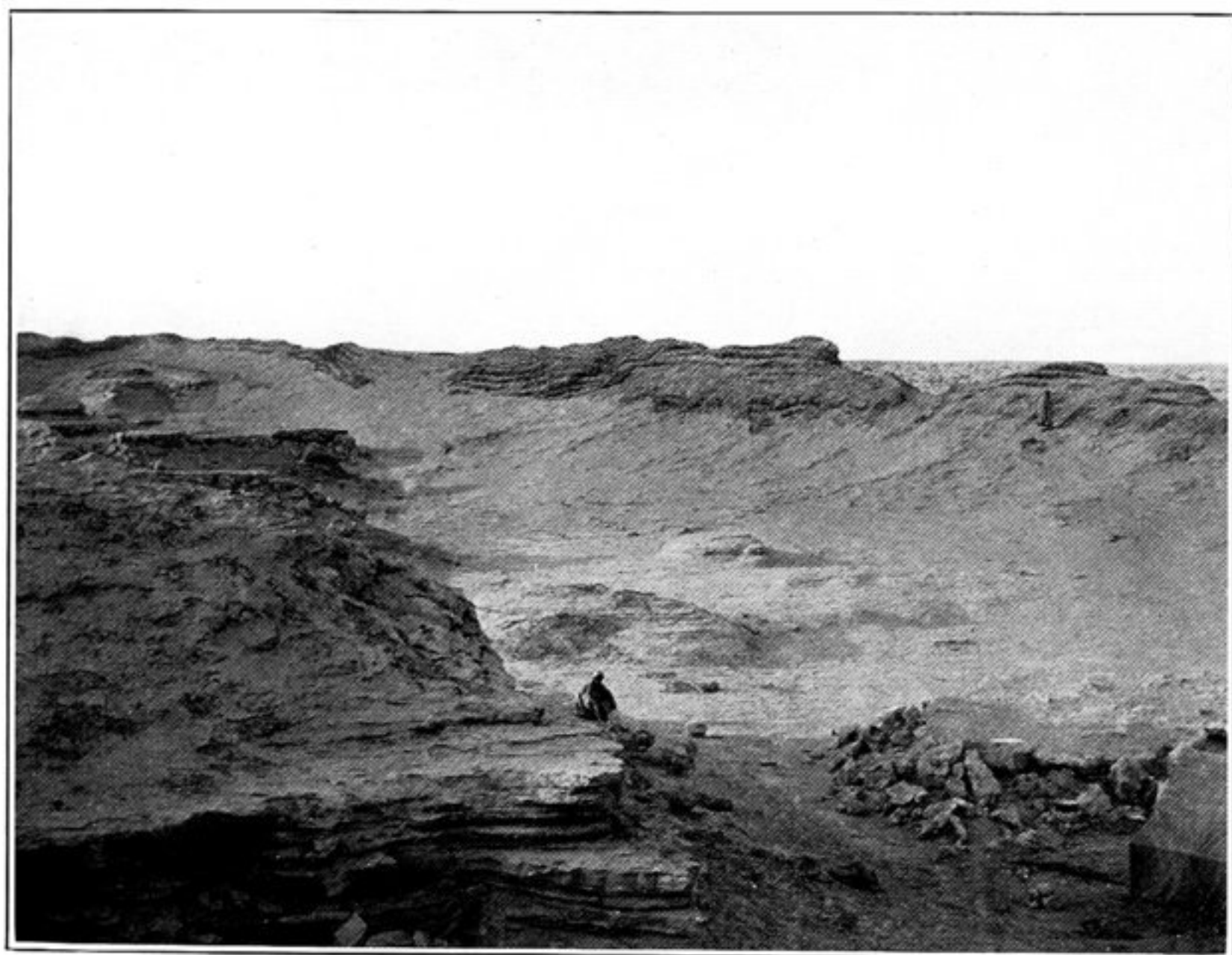
159. GRAVE PITS ON TOP OF MESA L.C. AFTER CLEARING.  
View obscured by effects of sand-storm.



160. VIEW ACROSS INTERIOR OF ANCIENT CASTRUM L.E., FROM NORTH.  
Position of main gate marked by arrow.



161. RAMPART AT SOUTH-EAST CORNER OF ANCIENT CASTRUM L.E.,  
LOP DESERT.



162. WEST RAMPART OF ANCIENT CASTRUM L.E., LOP DESERT,  
SEEN FROM INSIDE NORTH GATE.



163. PORTION OF EAST RAMPART OF ANCIENT CASTRUM L.E., SEEN  
FROM WITHIN.  
(Man on right stands on original ground level.)