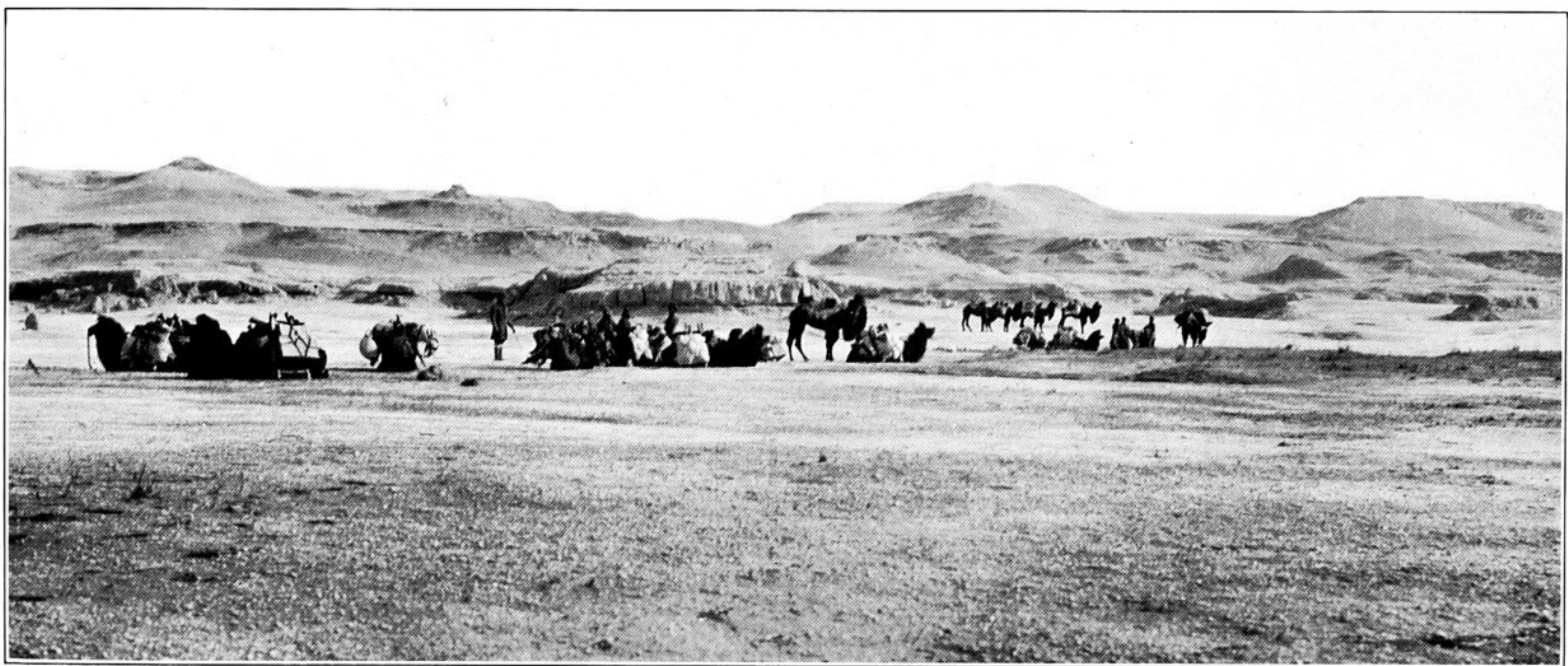


181. STRIP OF BOGGY GROUND ON SALT-ENCRUSTED LOP SEA BED, CROSSED TOWARDS KUM-KUDUK.



182. CAMP CVII AT FOOT OF CLAY TERRACES OVERLOOKING EASTERNMOST BAY OF DRIED-UP LOP SEA BED.



183. CAMP CVI WITH FIRST VEGETATION REACHED ON NORTH SHORE OF DRIED-UP LOP SEA BED.