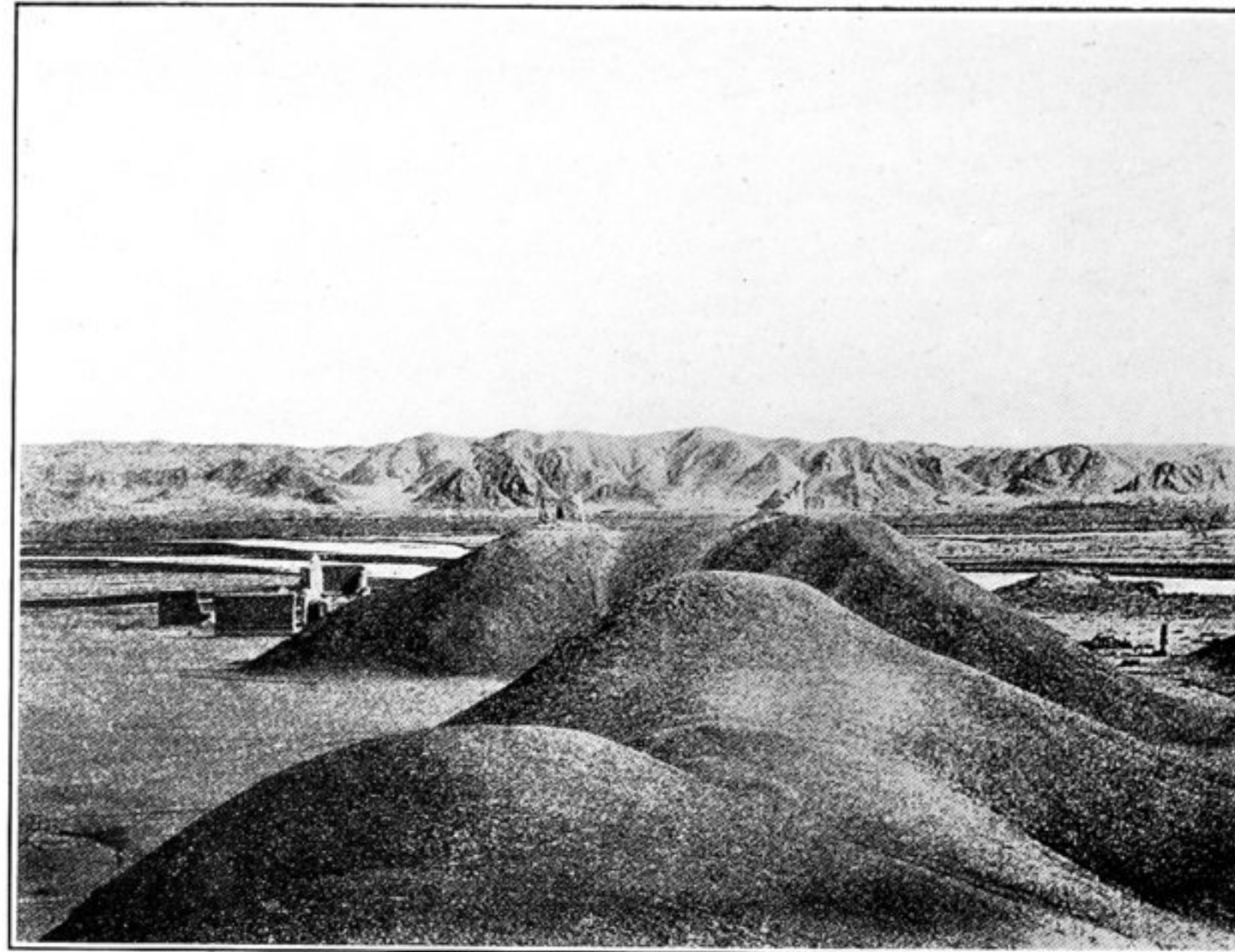


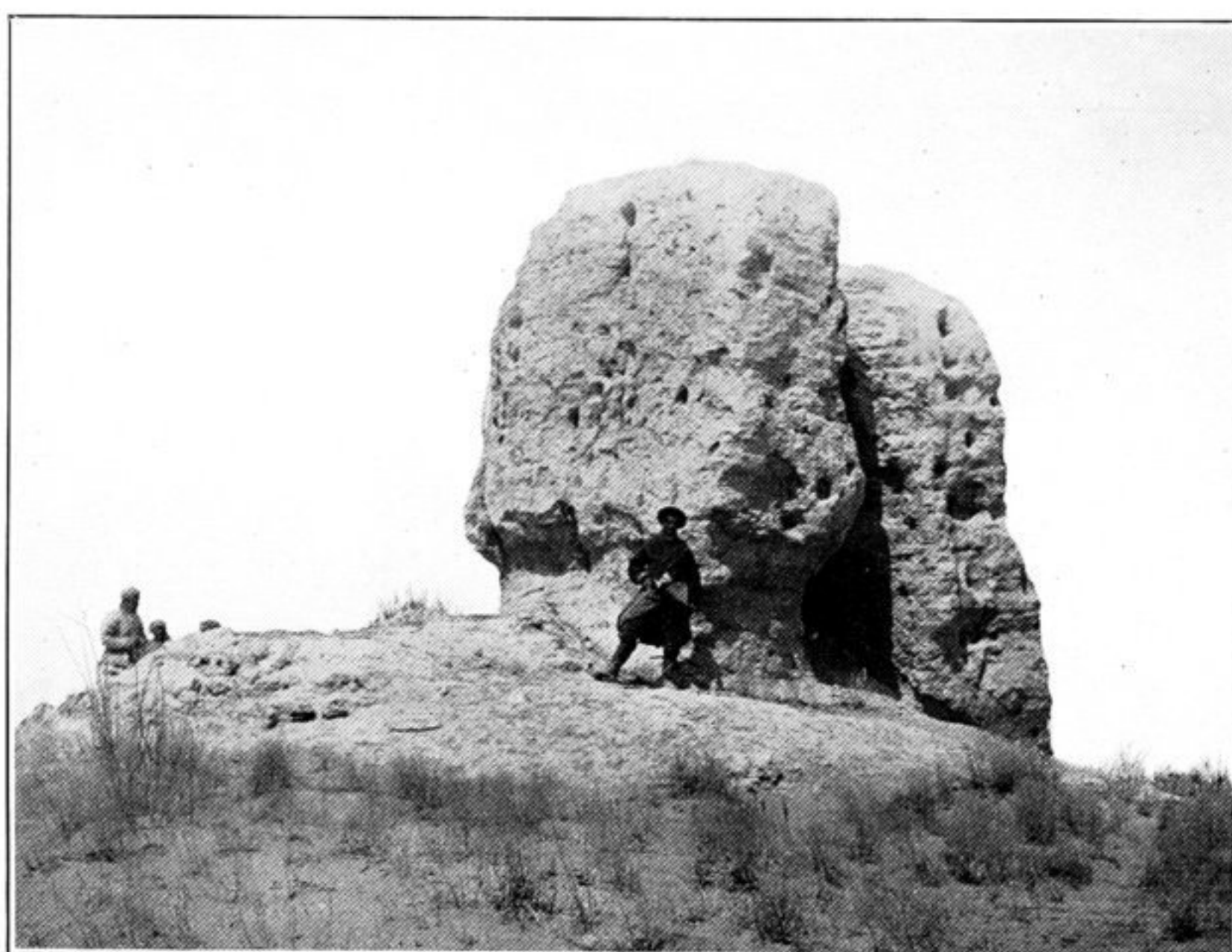
212. WATCH-STATION T. XLI. o, OF LATER DATE, OUTSIDE LIMES LINE, NORTH-WEST OF SHIH-ÉRH-TUN.



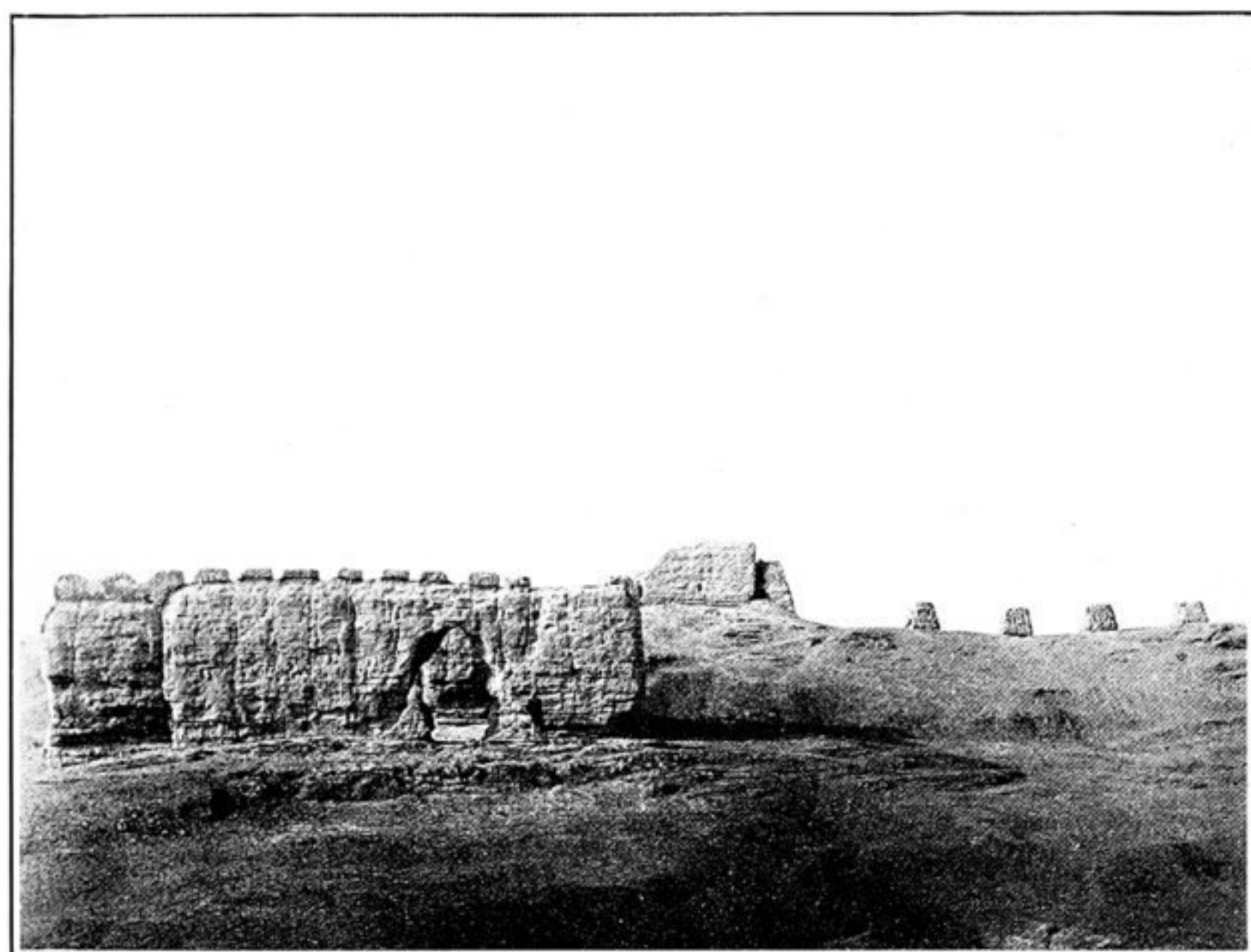
213. RUINED TEMPLE ON LEFT RIVER-BANK, WAN-SHAN-TZÜ DEFILE.



214. WATCH-TOWER T. XLII. f, ON LIMES LINE EAST OF SHIH-ÉRH-TUN.



215. WATCH-TOWER T. XXXVIII. a, ON LIMES LINE NEAR AN-HSI.



216. RUINED FORT AND WATCH-TOWER T. XLII. d OF LIMES, NEAR SHIH-ÉRH-TUN.



217. INTERIOR OF RUINED FORTRESS CH'IAO-WAN-CH'ÉNG ON LIMES EAST OF BULUNGIR.