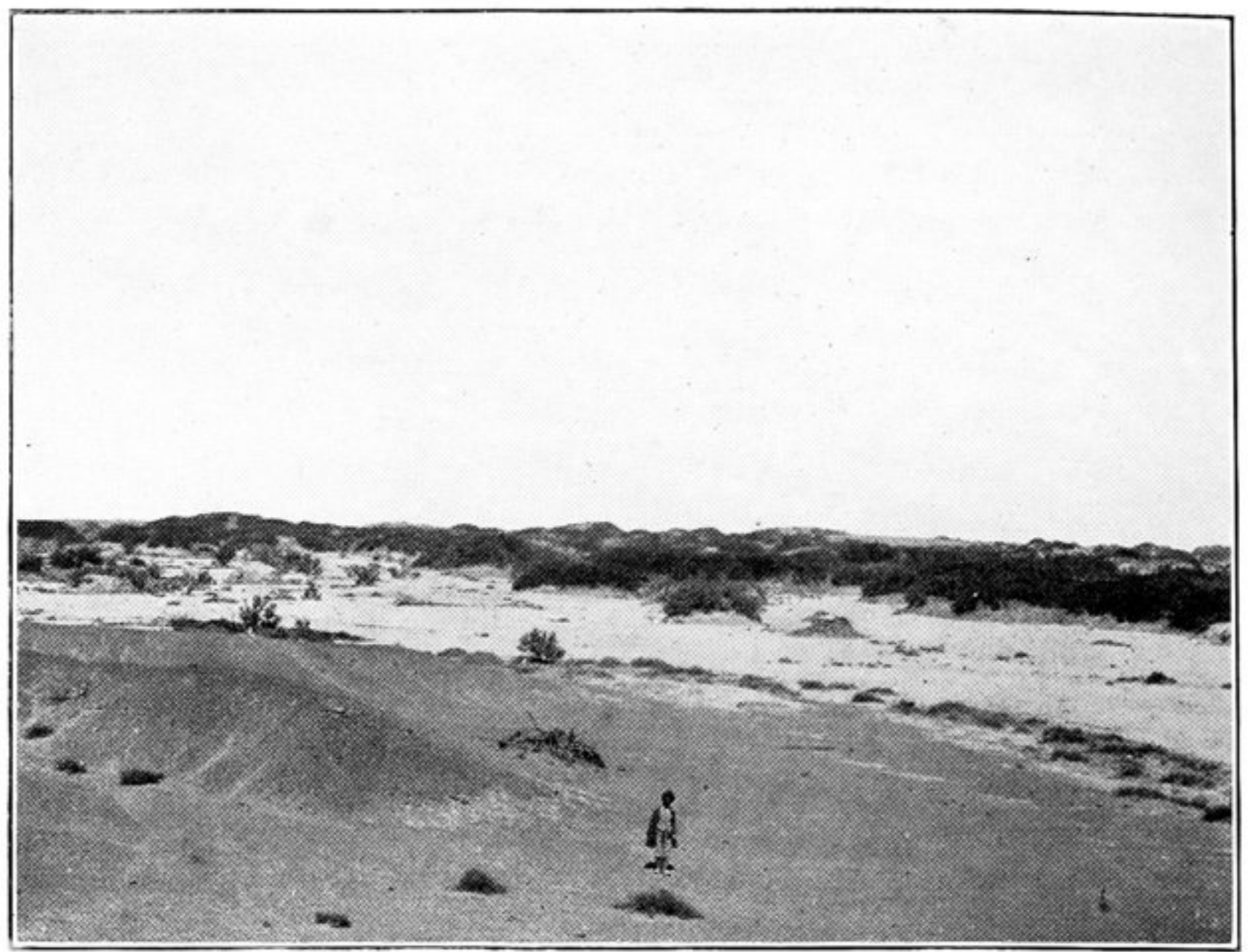
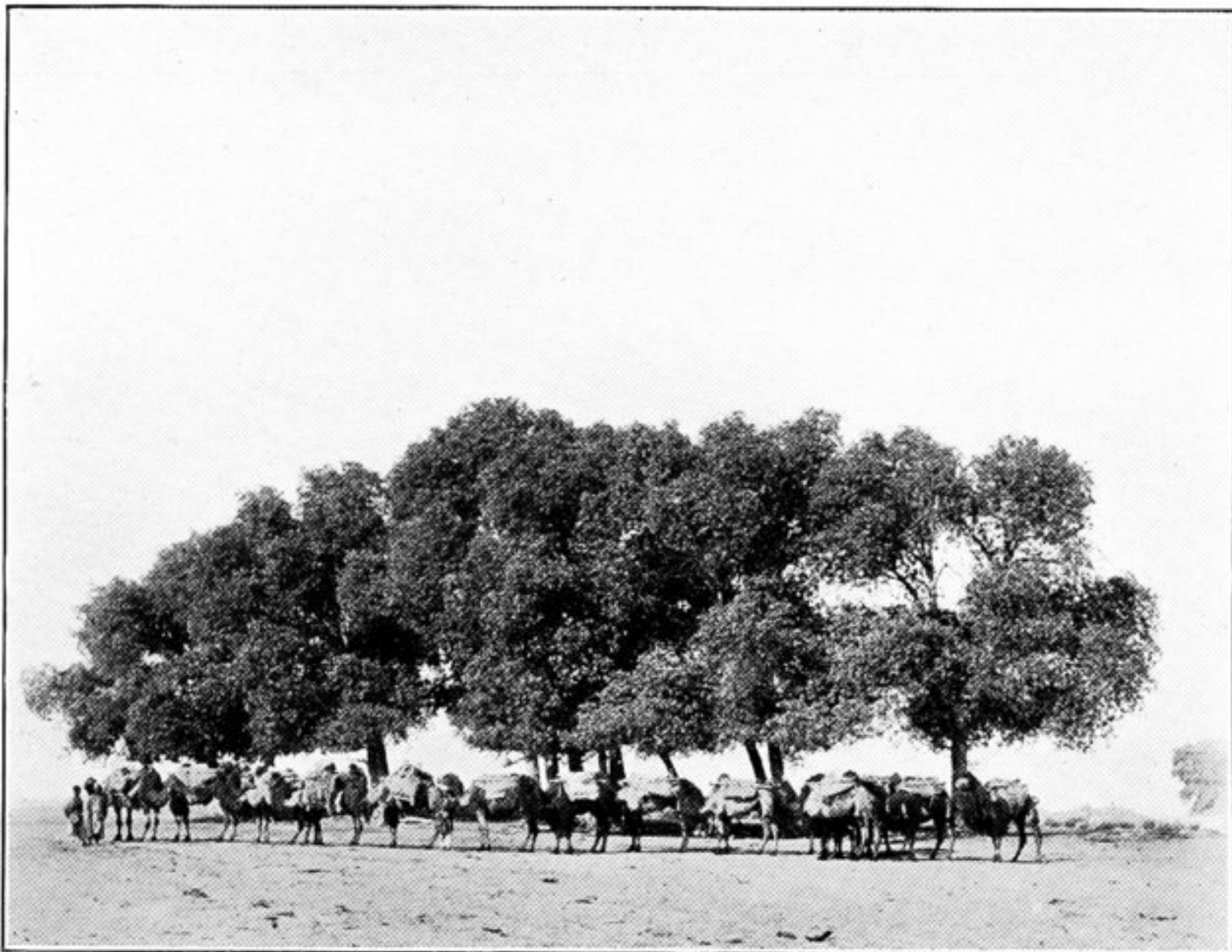


234. INNER FORT OF ADŪNA-KŌRA, NEAR KHARA-KHOTO.



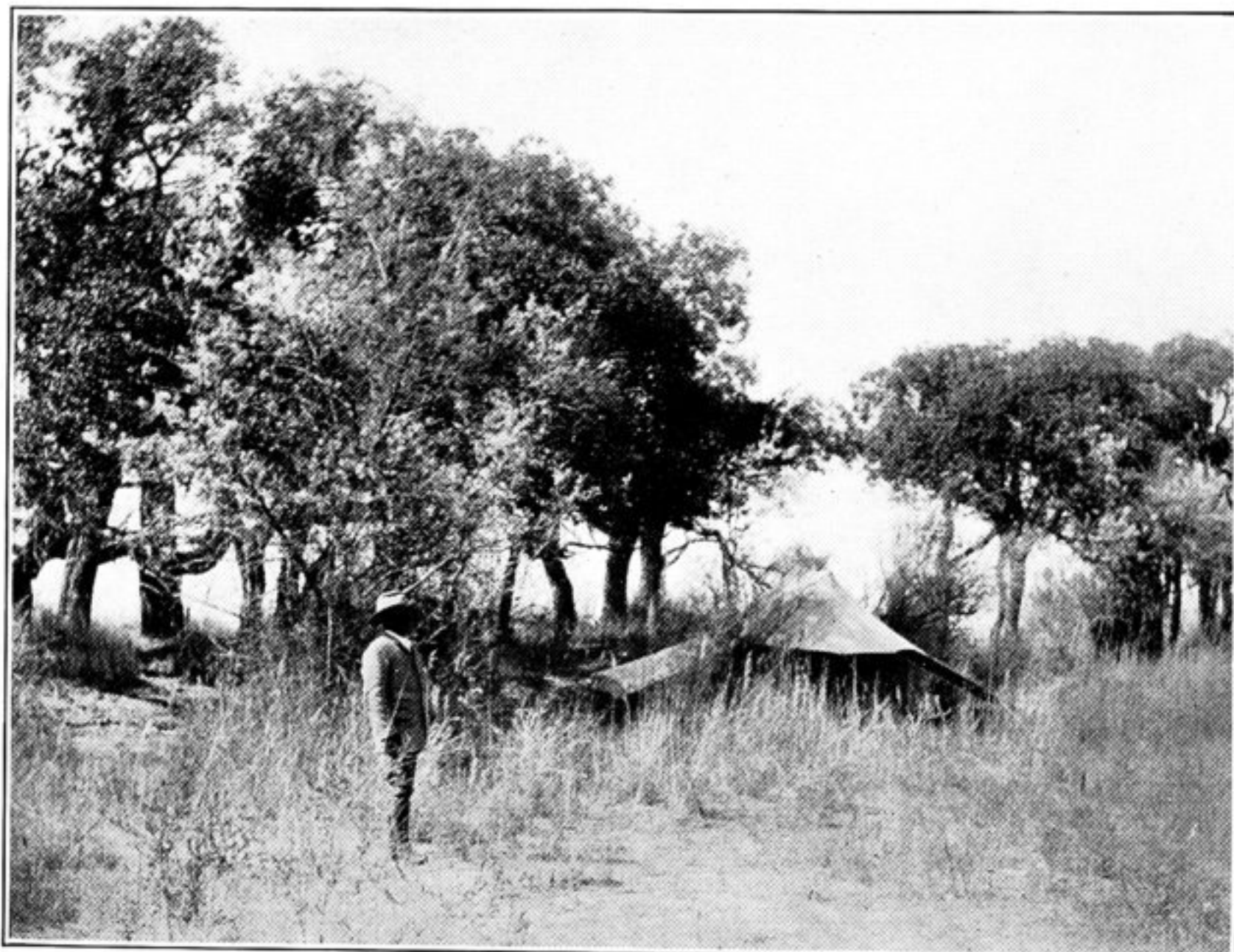
235. DRY RIVER-BED WEST OF KHARA-KHOTO.



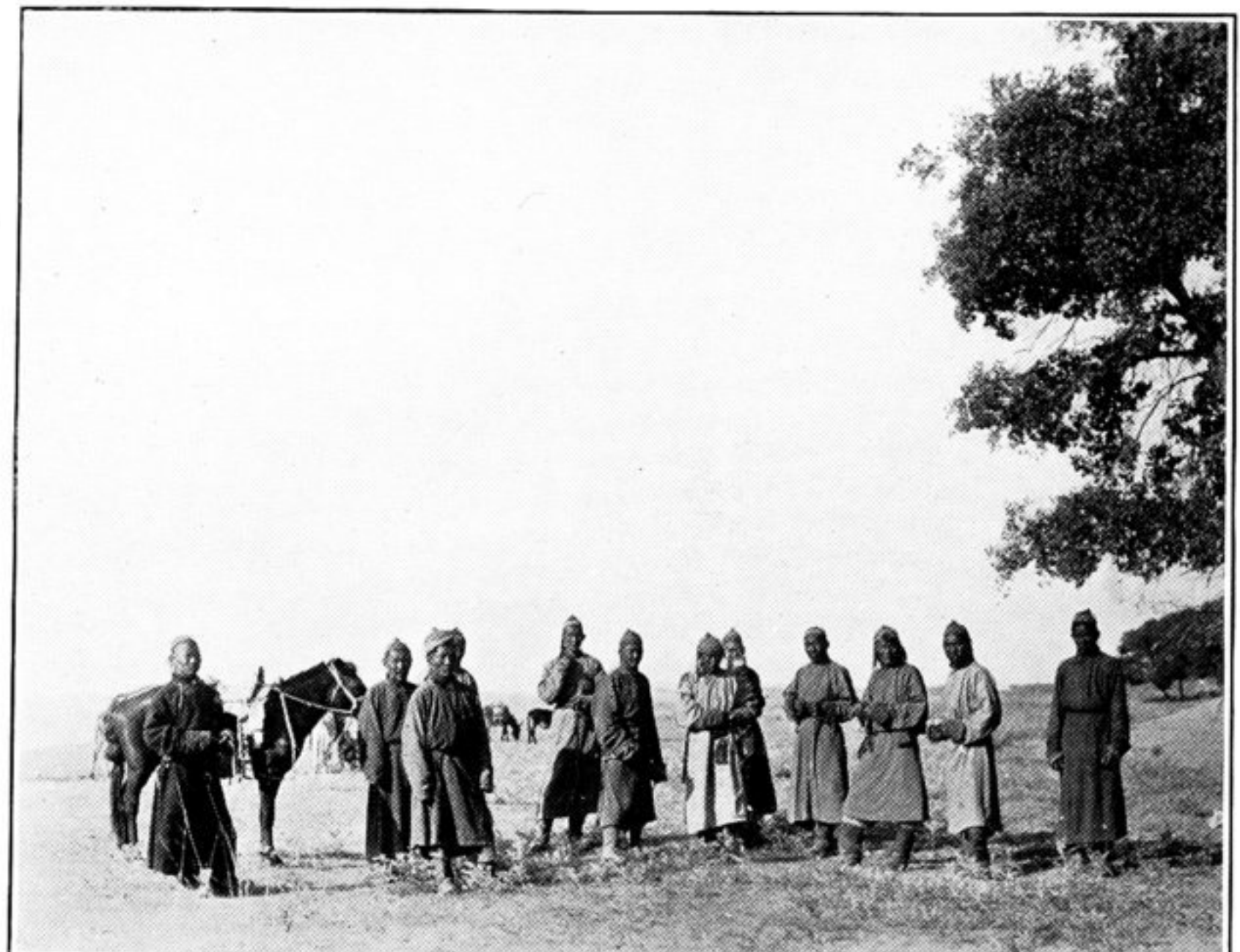
236. GROVE OF WILD POPLARS NEAR TĀWUN-TORA, ETSIN-GOL DELTA.



237. HALT AT BAHĀN-DURWULJIN, ETSIN-GOL DELTA.



238. CAMP AT BORGASU, ON ETSIN-GOL.



239. TORGUT MONGOLS AT TĀWUN-TORA, ETSIN-GOL DELTA.