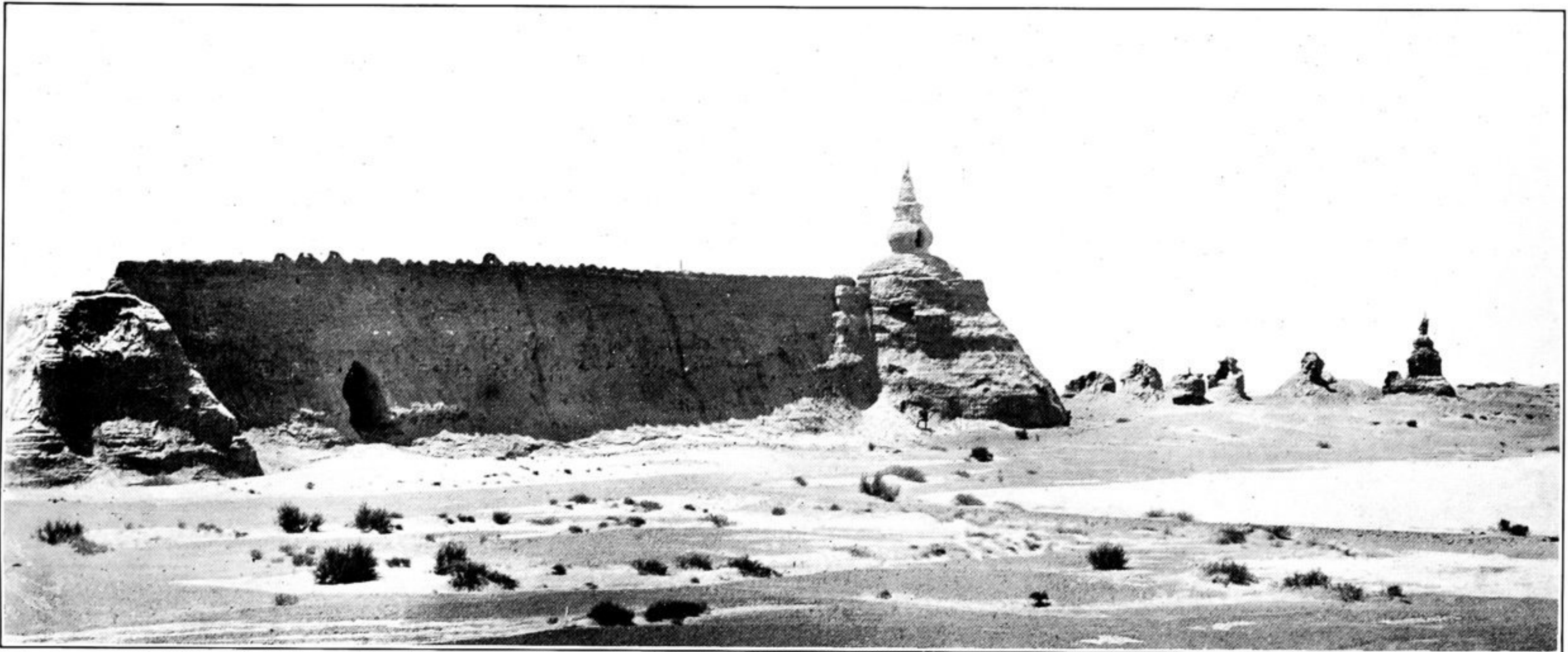
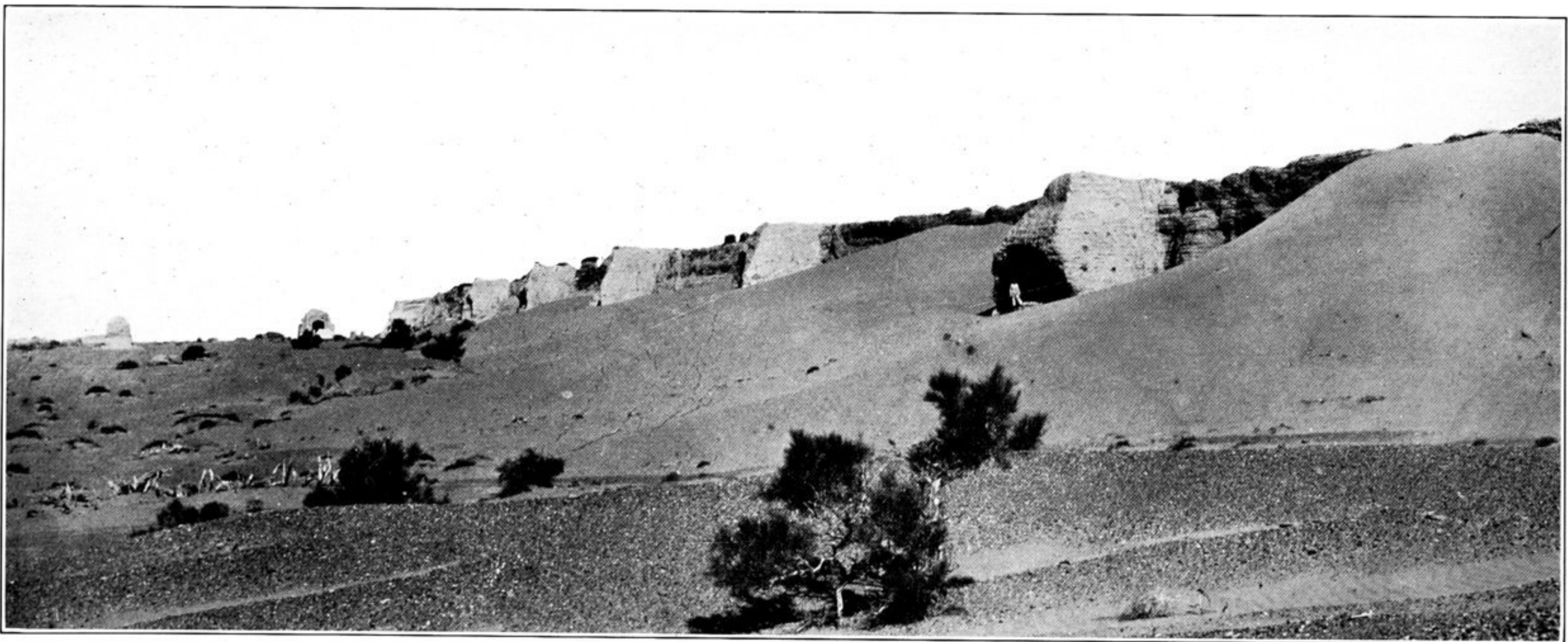


240. CIRCUMVALLATION OF KHARA-KHOTO, SEEN FROM SOUTH-WEST.



241. NORTH-WESTERN CORNER OF CIRCUMVALLATION OF KHARA-KHOTO, WITH STÜPAS OUTSIDE, SEEN FROM NORTH.



242. SOUTH FACE OF CIRCUMVALLATION OF KHARA-KHOTO, WITH SAND HEAPED UP ON LEE SIDE.