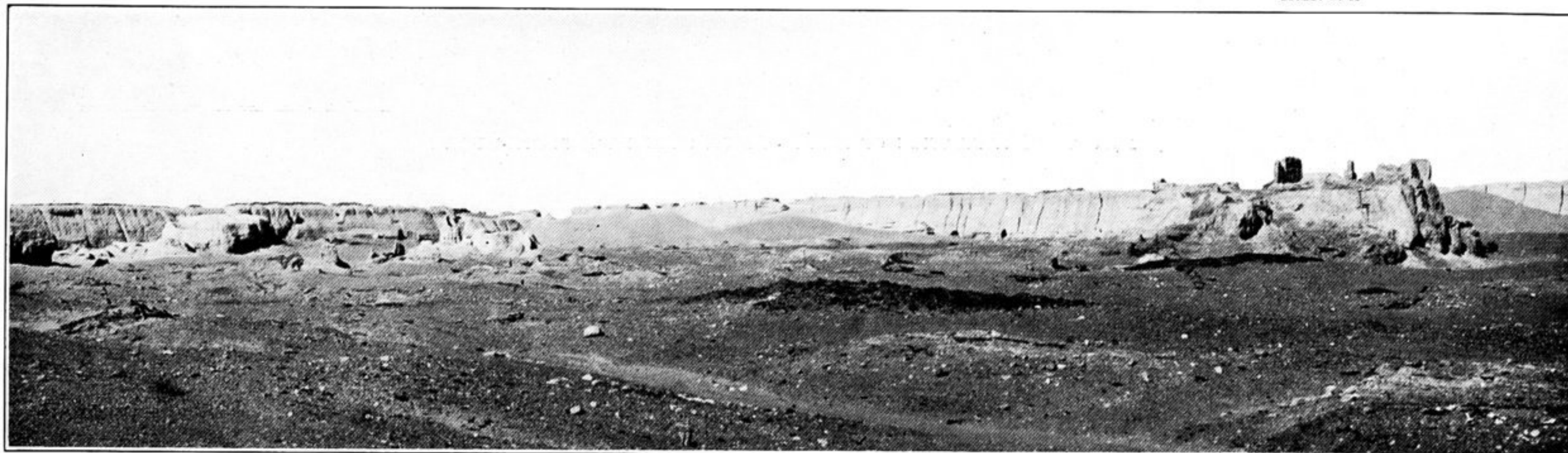


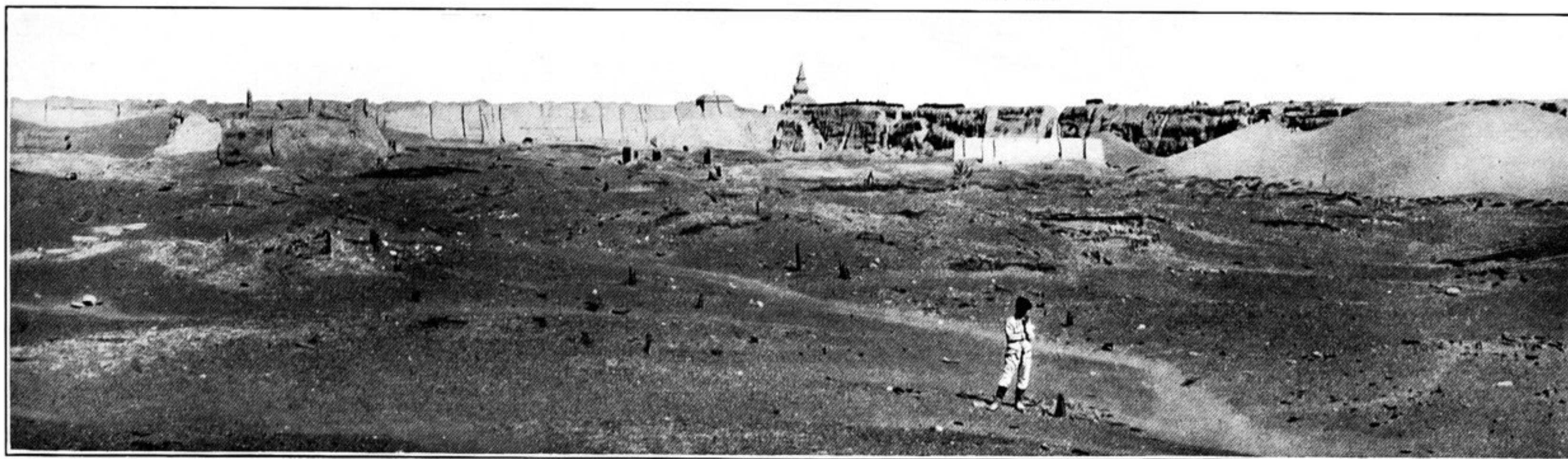
243. WEST FACE OF CIRCUMVALLATION OF KHARA-KHOTO, WITH MUHAMMADAN TOMB AT SOUTH-WEST CORNER.

K.K. I. ii

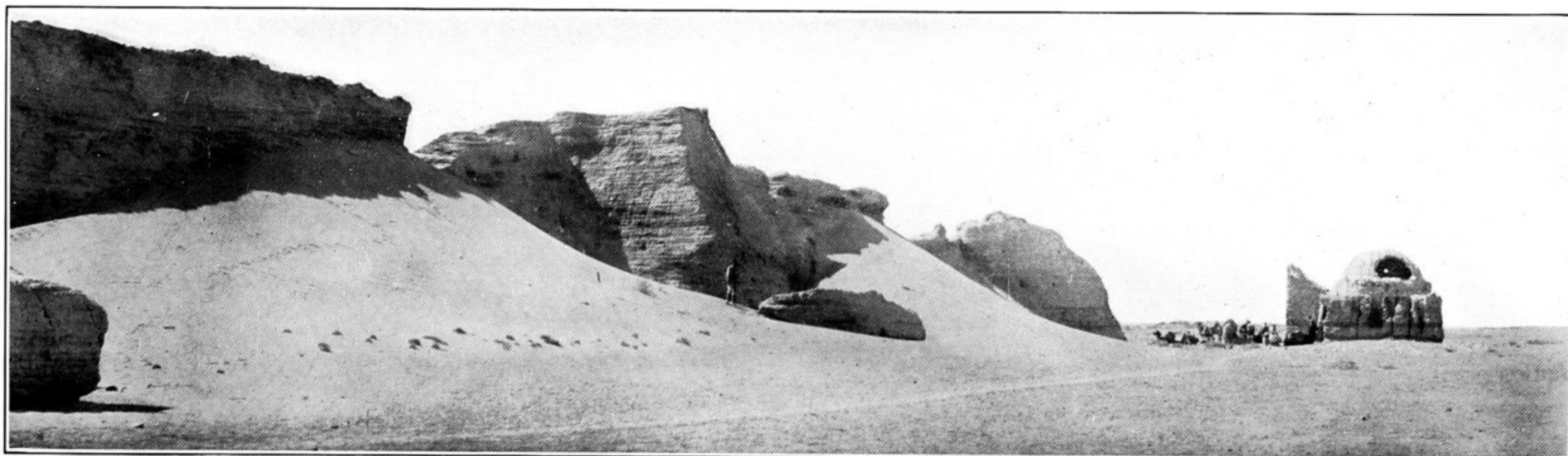


244. INTERIOR OF KHARA-KHOTO, LOOKING TOWARDS SOUTH-EAST.

K.K. I. i



245. INTERIOR OF KHARA-KHOTO, LOOKING TOWARDS NORTH-WEST.



246. WESTERN WALL OF KHARA-KHOTO, WITH BREACHES DUE TO WIND-DRIVEN SAND, NEAR SOUTH-WEST CORNER.