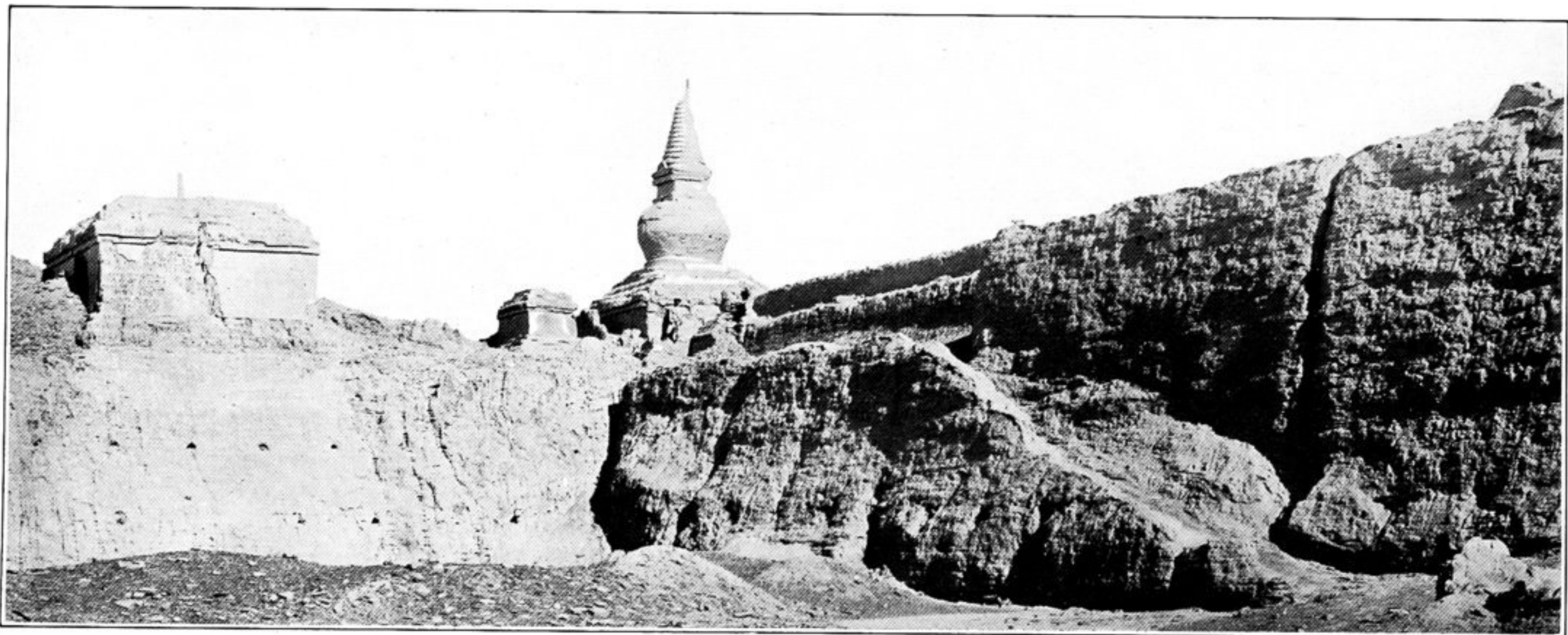
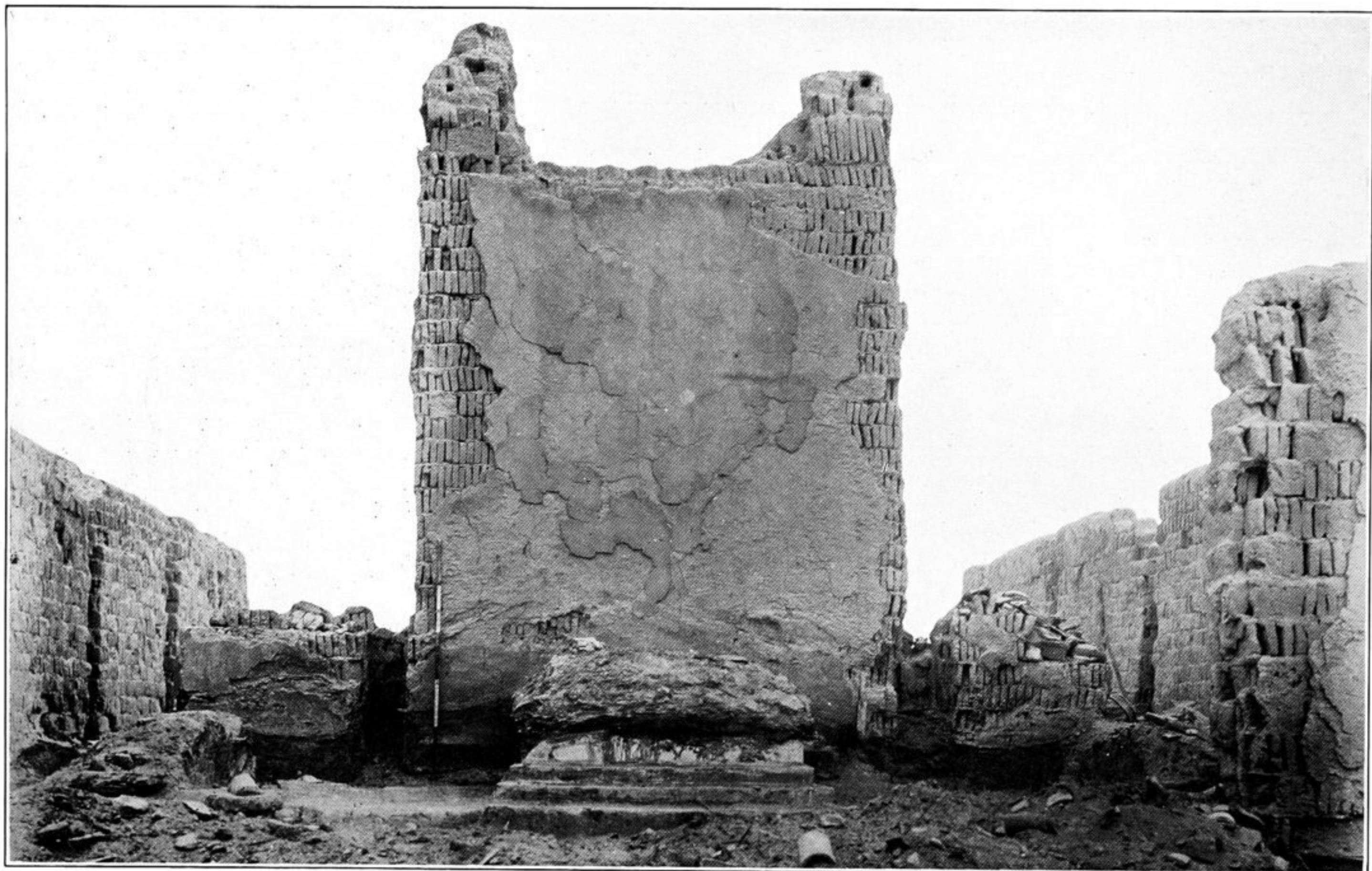


247. NORTH-WEST CORNER OF CIRCUMVALLATED AREA, KHARA-KHOTO, SEEN FROM WITHIN.
Arrow marks position of passage cut through north wall.



248. RUINED STÜPAS BUILT ABOVE NORTH-WEST CORNER OF CIRCUMVALLATION, KHARA-KHOTO.



249. ALCOVE AT BACK OF TEMPLE K.K. I. i, KHARA-KHOTO, WITH IMAGE BASES.