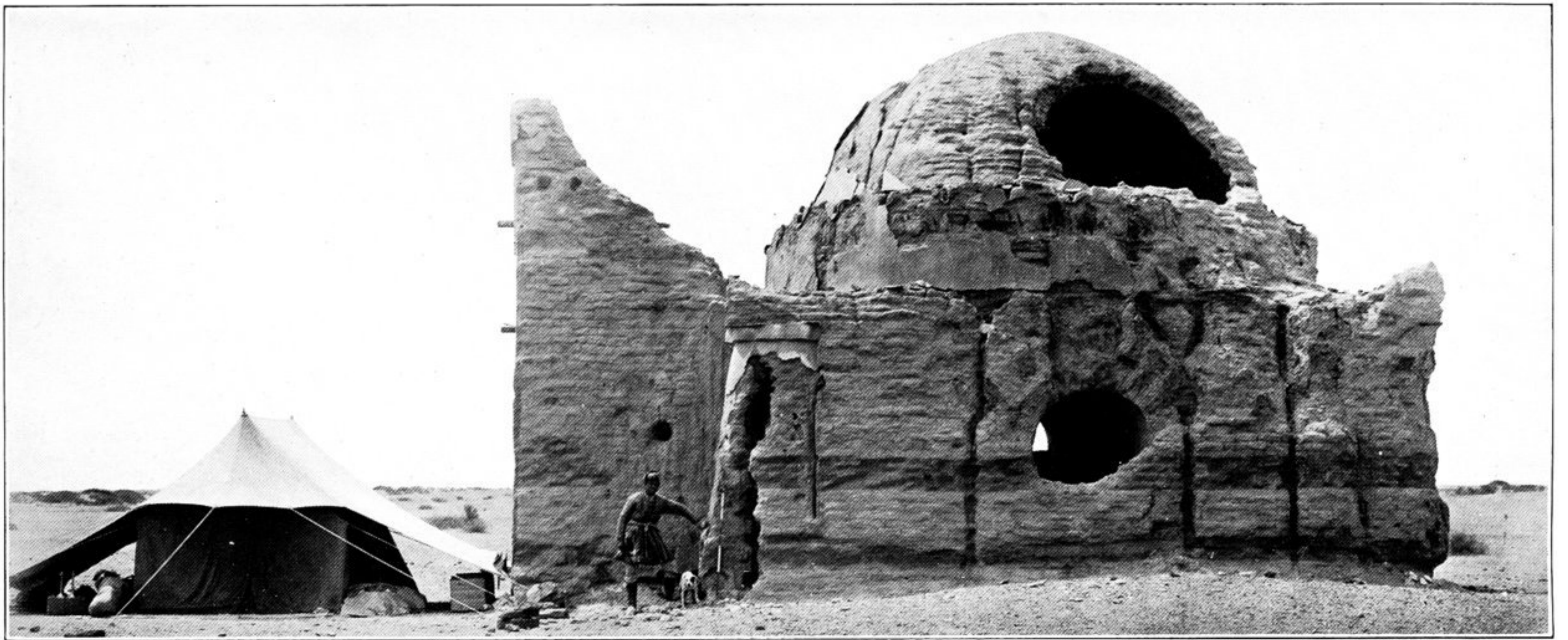
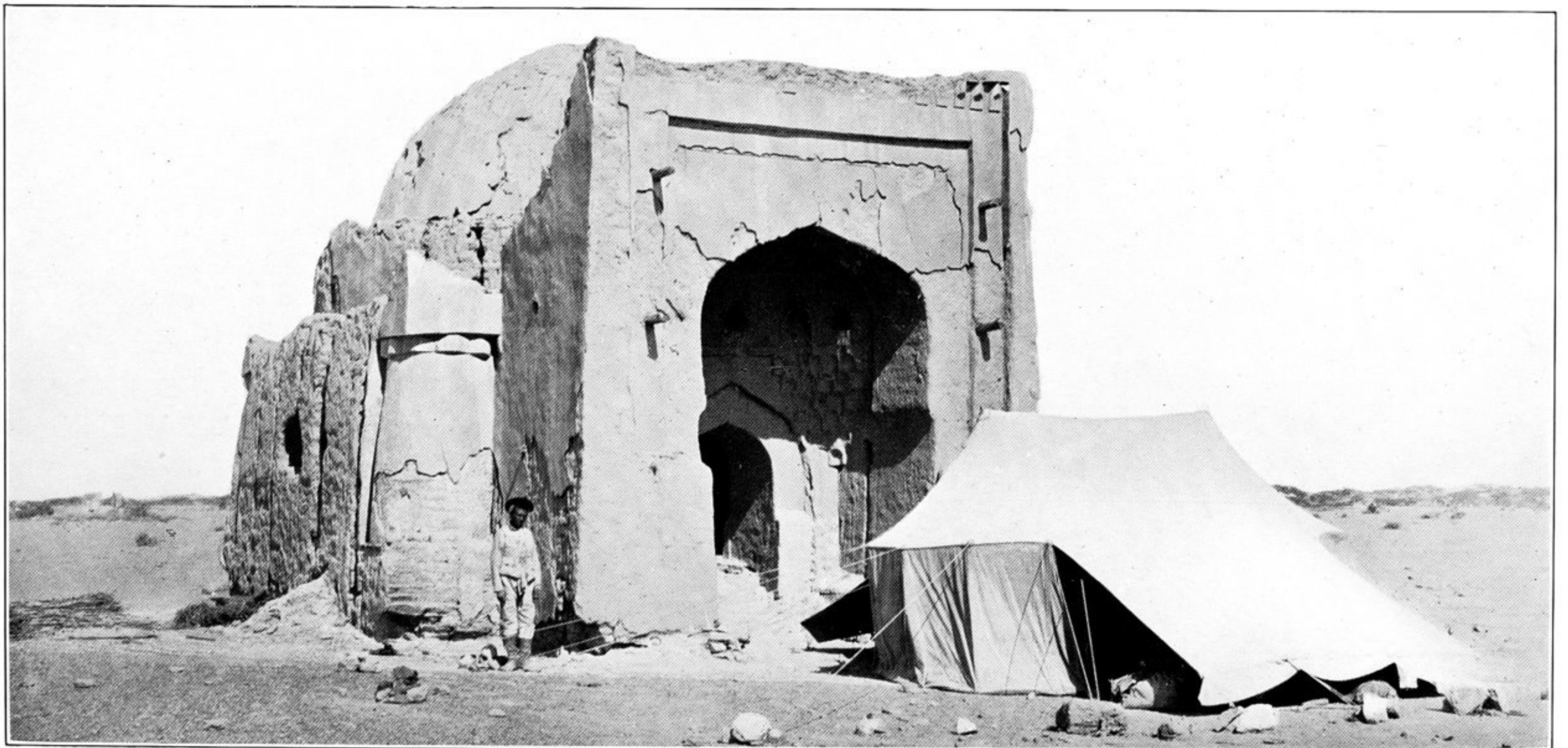


250. BASTIONS GUARDING EASTERN GATE OF KHARA-KHOTO.



251. RUIN OF MUHAMMADAN TOMB, K.K. VI, KHARA-KHOTO, SEEN FROM NORTH.



252. FRONT OF MUHAMMADAN TOMB, K.K. VI, KHARA-KHOTO, FACING EASTWARD.