



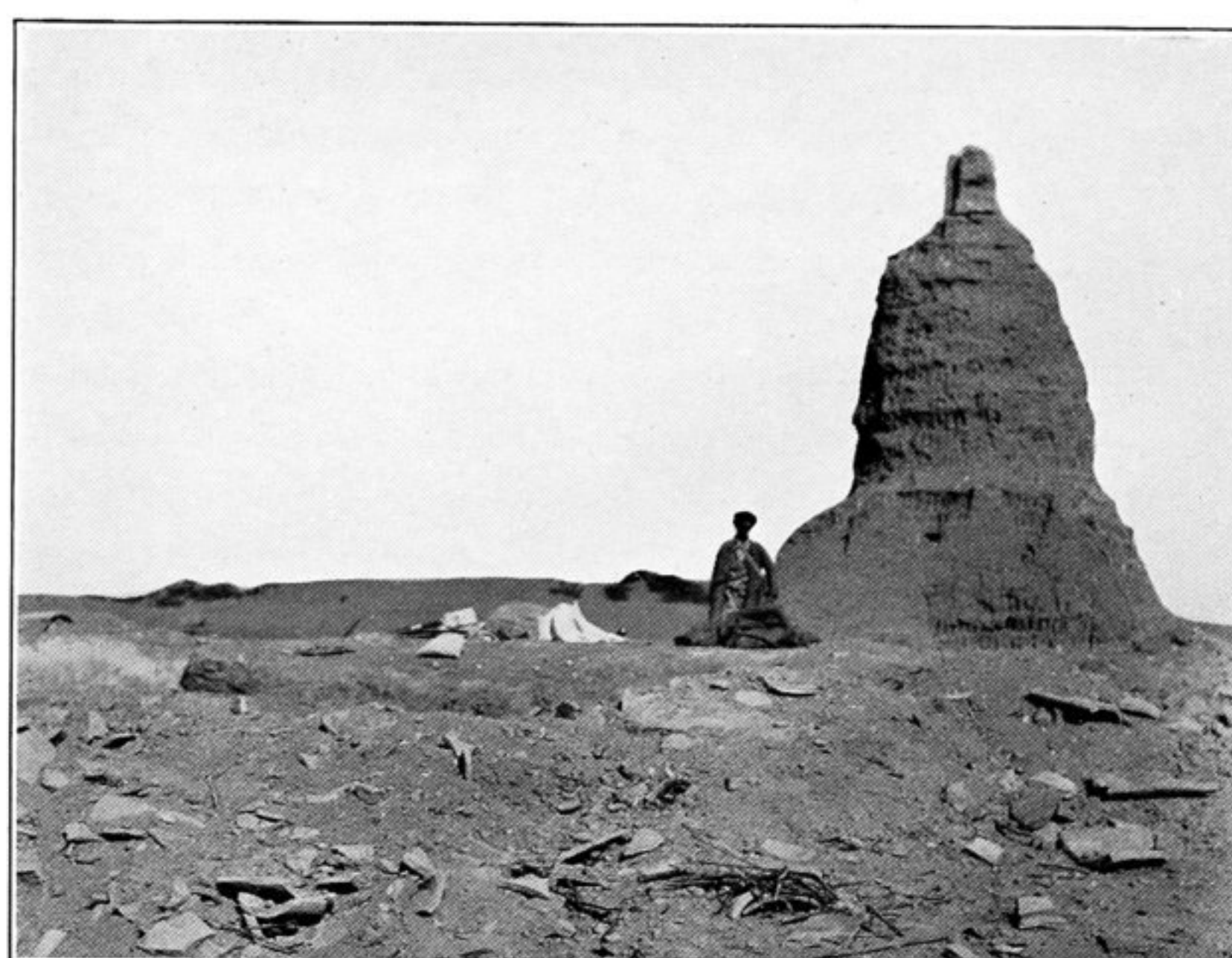
253. RUINED DWELLING, EAST OF K.K. IV, NEAR KHARA-KHOTO.



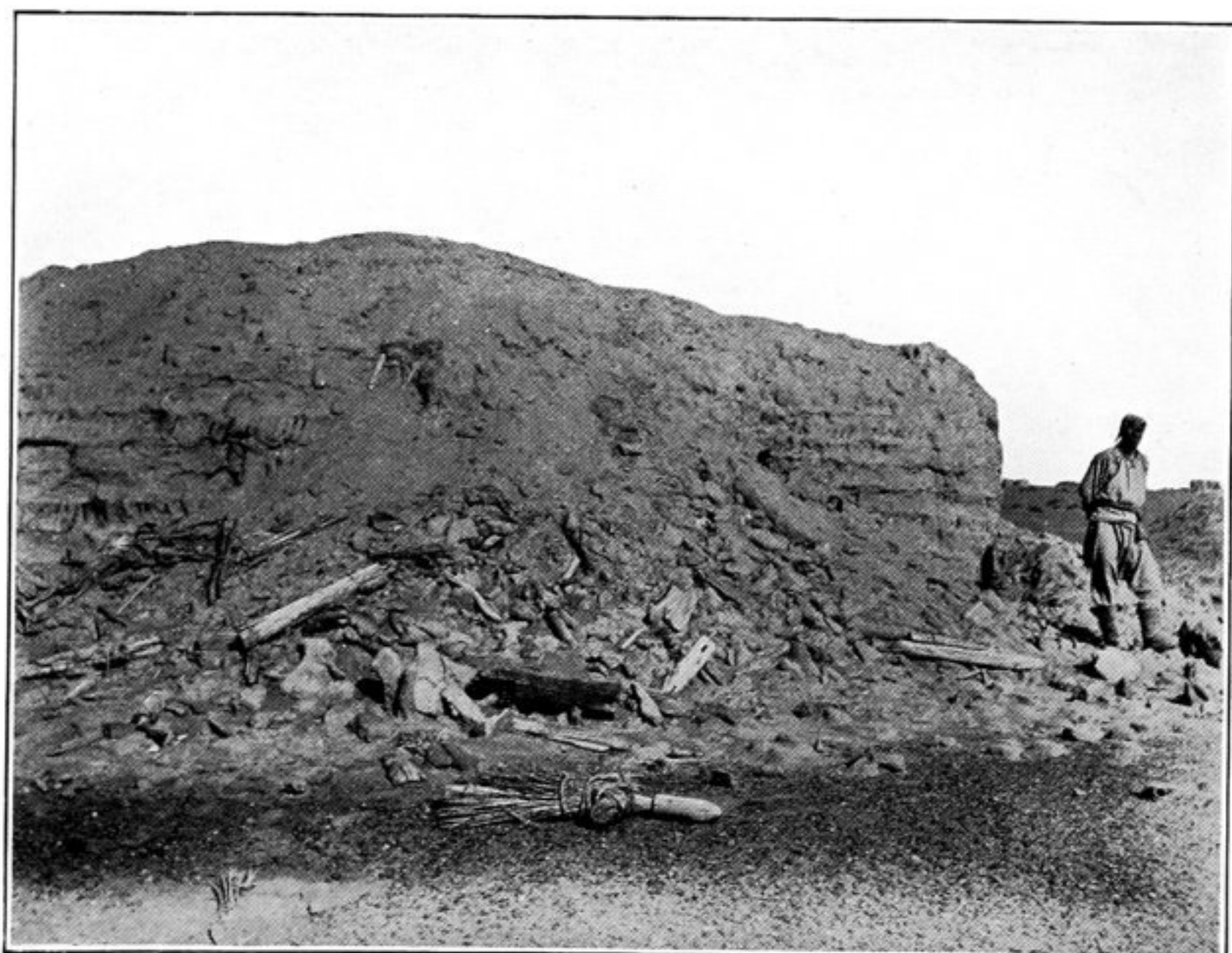
254. RUINS OF DWELLING, EAST OF K.K. XIV, NEAR KHARA-KHOTO.



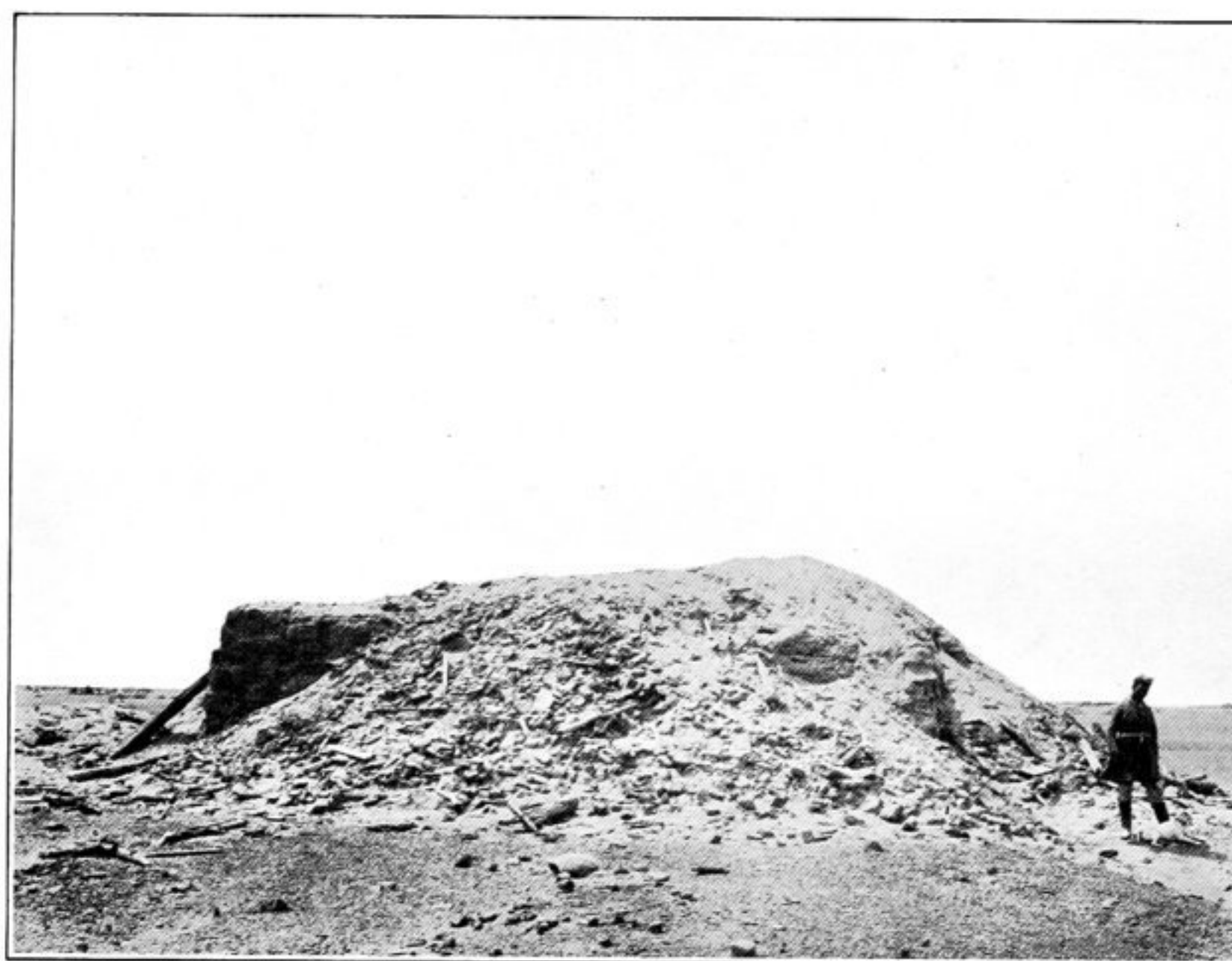
255. REMAINS OF DWELLING, EAST OF K.K. II, NEAR KHARA-KHOTO, PARTIALLY BURIED IN TAMARISK-CONE.



256. RUINED SHRINE AND STŪPA, K.K. IV, KHARA-KHOTO.



257. BASE OF DESTROYED STŪPA, K.K. II, WITH DEBRIS OF STUCCO SCULPTURE, BEFORE CLEARING.



258. DEBRIS COVERING SLOPES OF BASE OF DESTROYED STŪPA, K.K. II, KHARA-KHOTO.