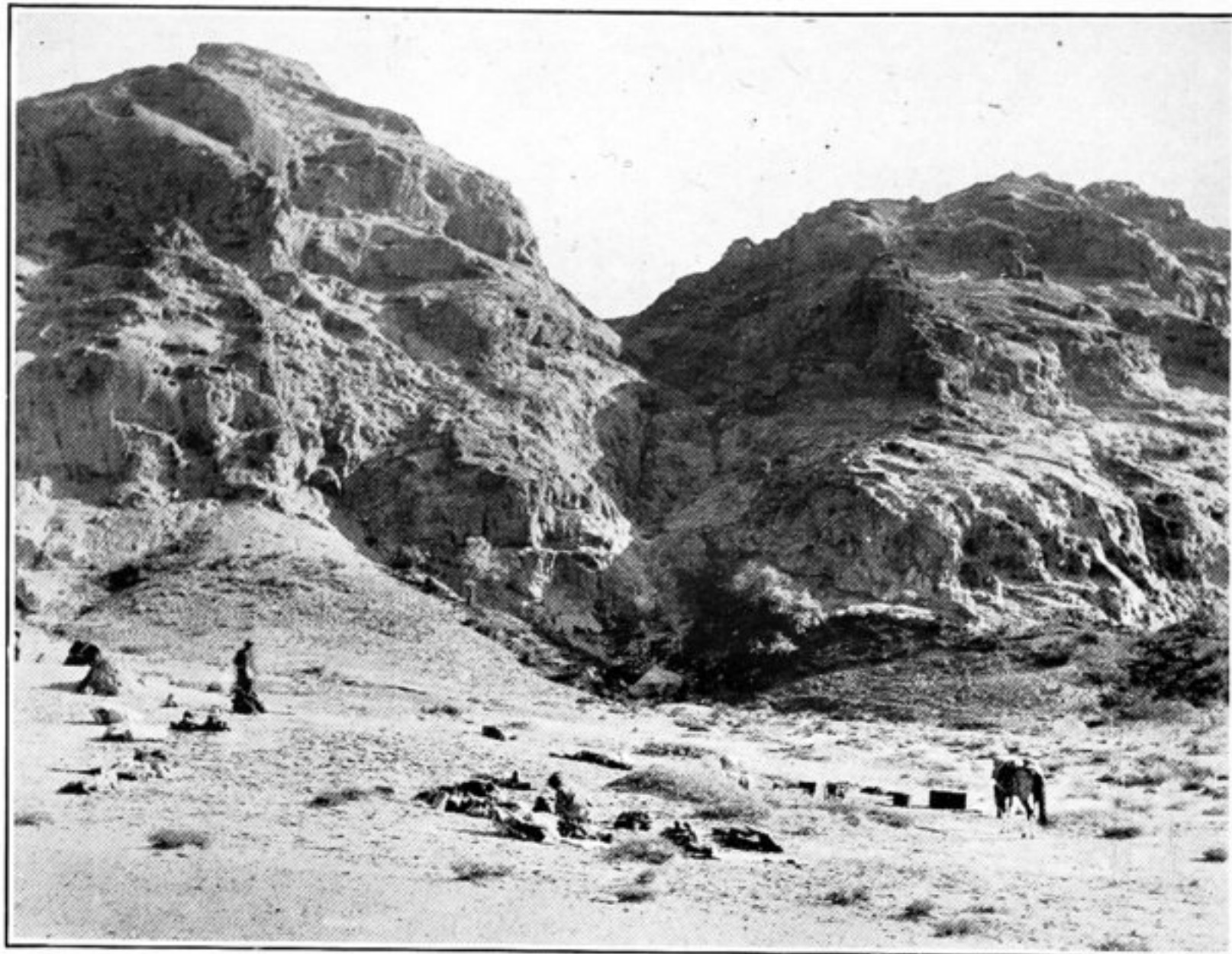


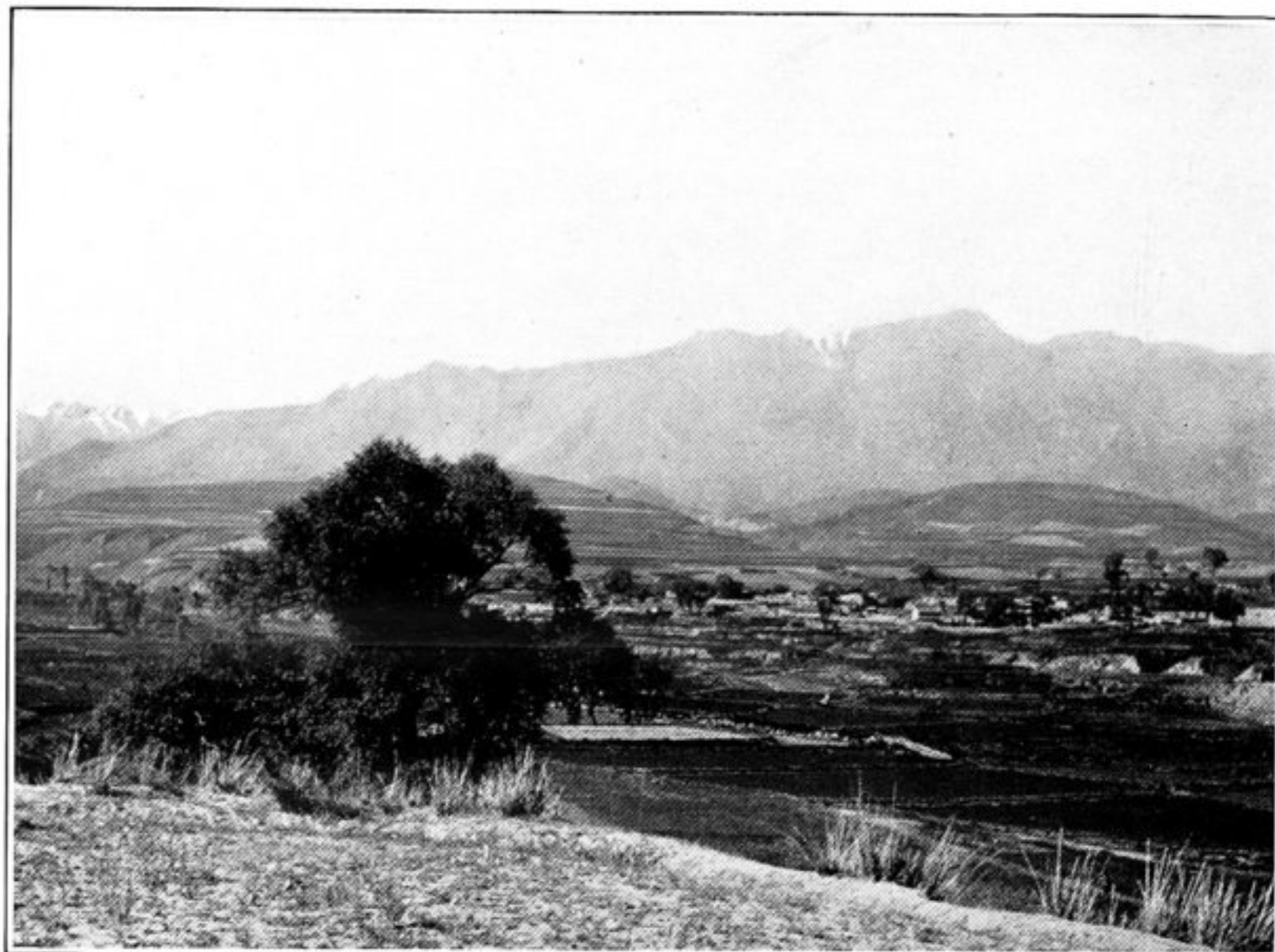
259. SAND-SMOTHERED RIDGE OF DESERT CHAIN, SOUTH OF CAMP 160.



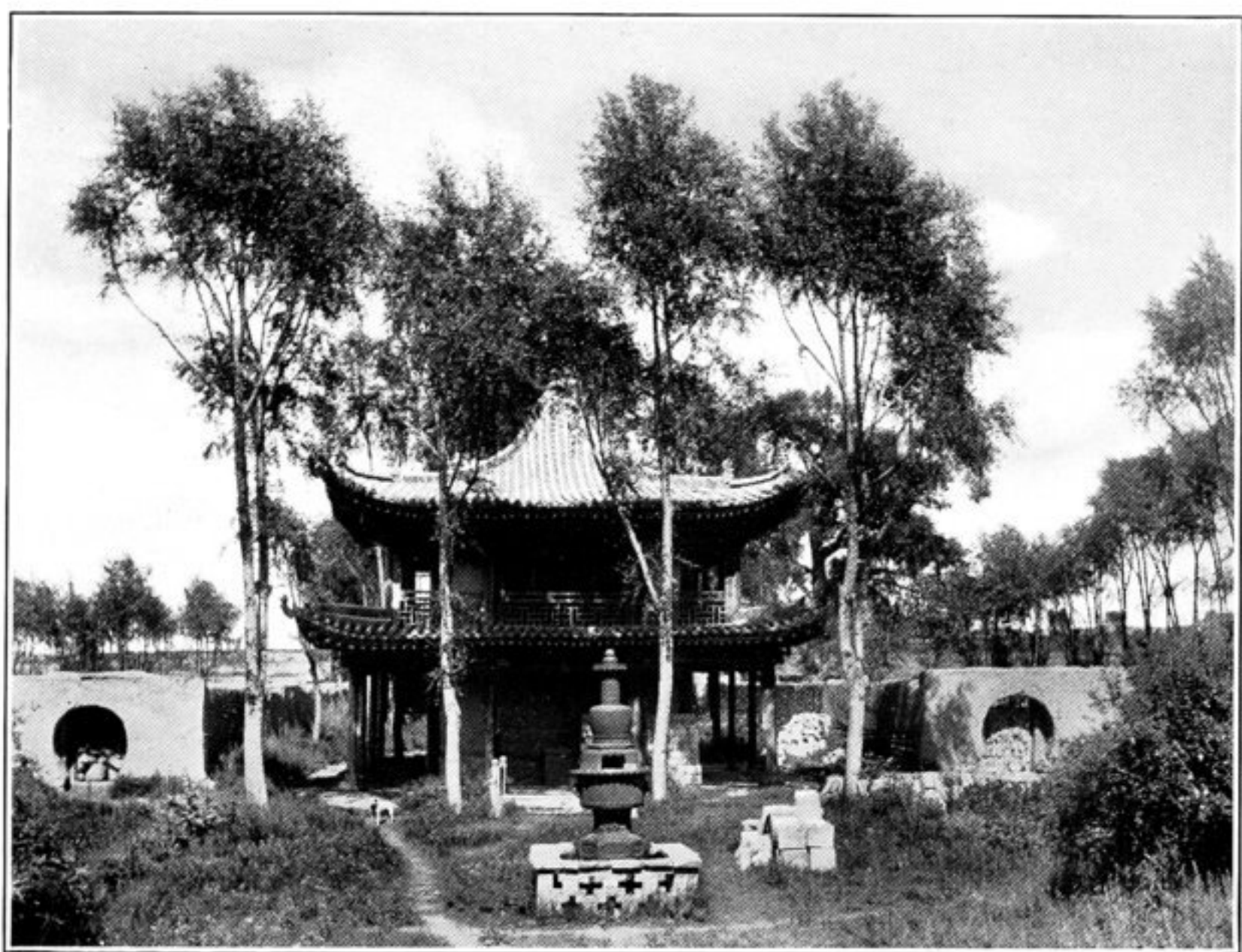
260. CAMP AT ZIGDA-KAYA SPRING, ON ROUTE TO KAO-T'AI.



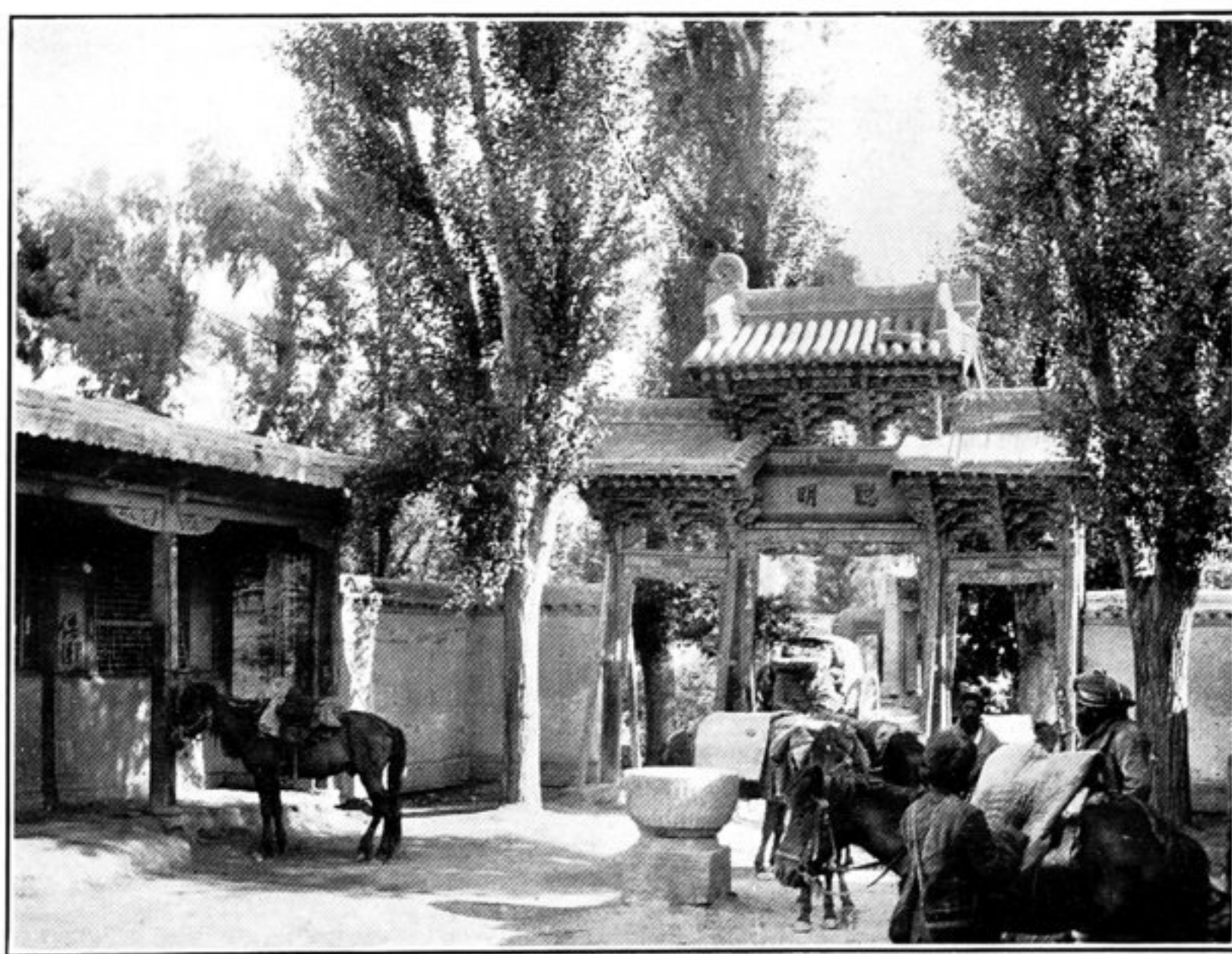
261. SITE OF MA-TI-SSŪ MONASTERY, SEEN ACROSS VALLEY.



262. NAN-SHAN RANGE AND VILLAGES AT ITS FOOT, LOOKING SOUTH OF NAN-KOU-CH'ENG.



263. TEMPLE COURT OUTSIDE HUNG-SHUI.



264. TEMPLE QUARTERS NEAR EAST GATE OF KAO-T'AI TOWN.