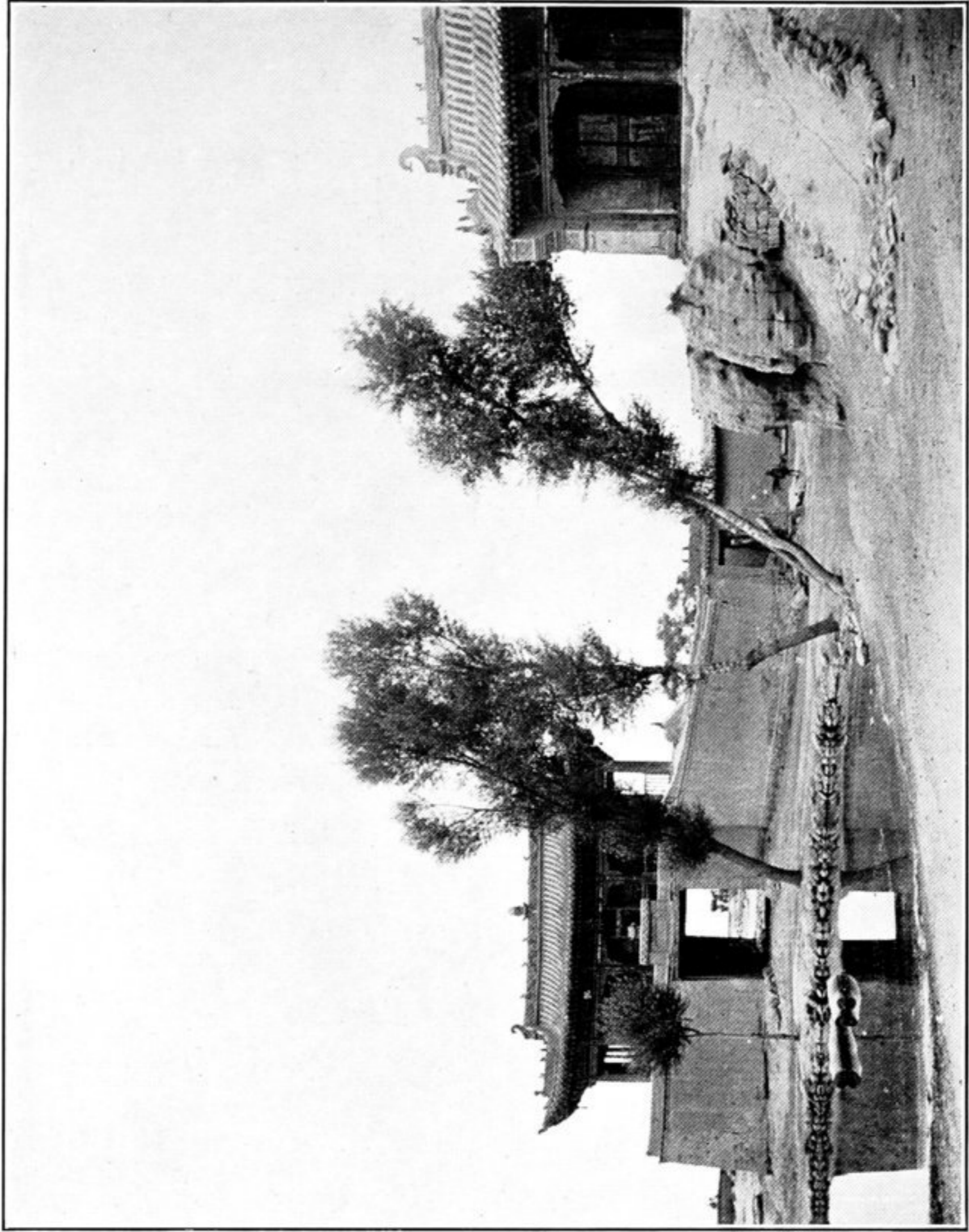
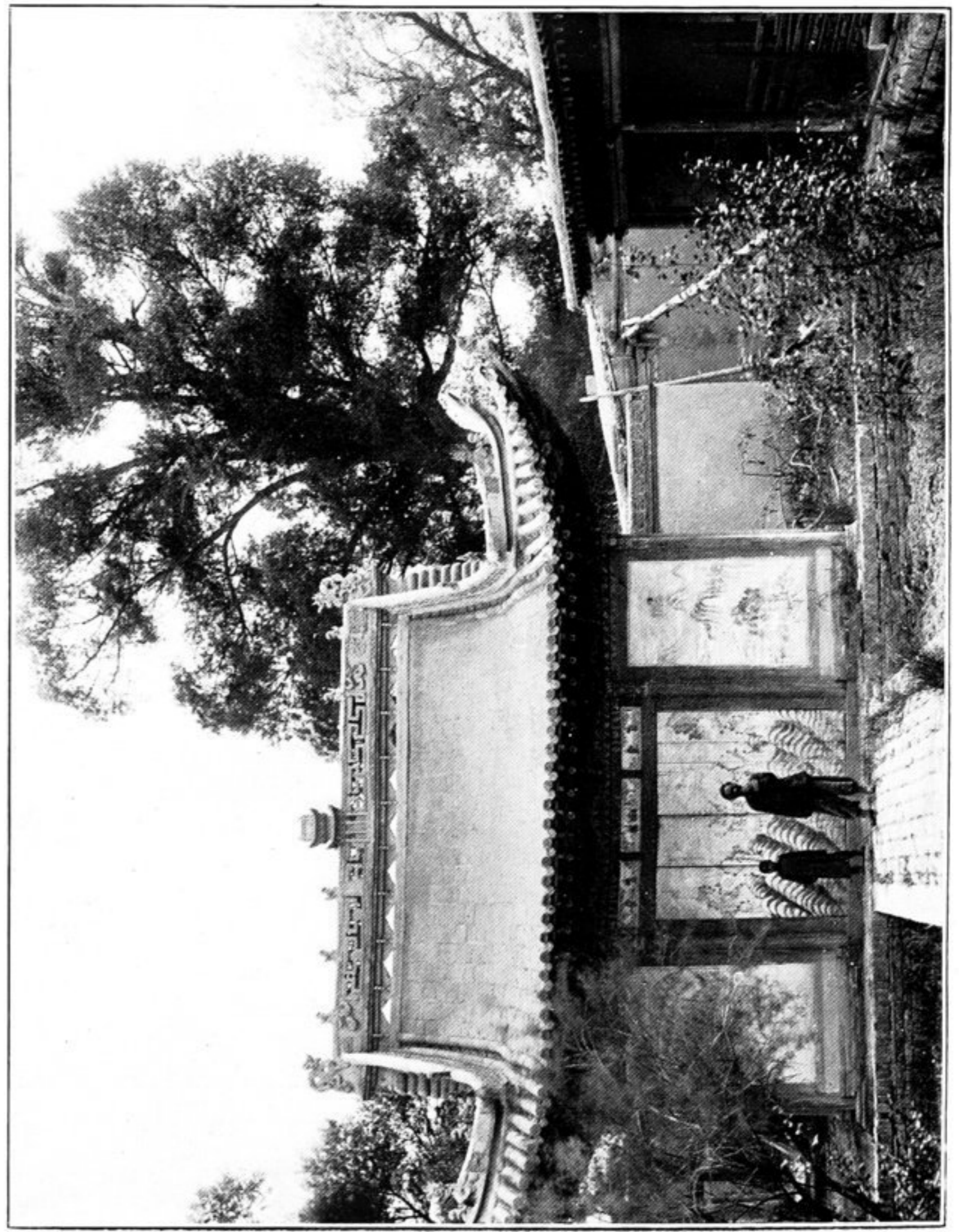


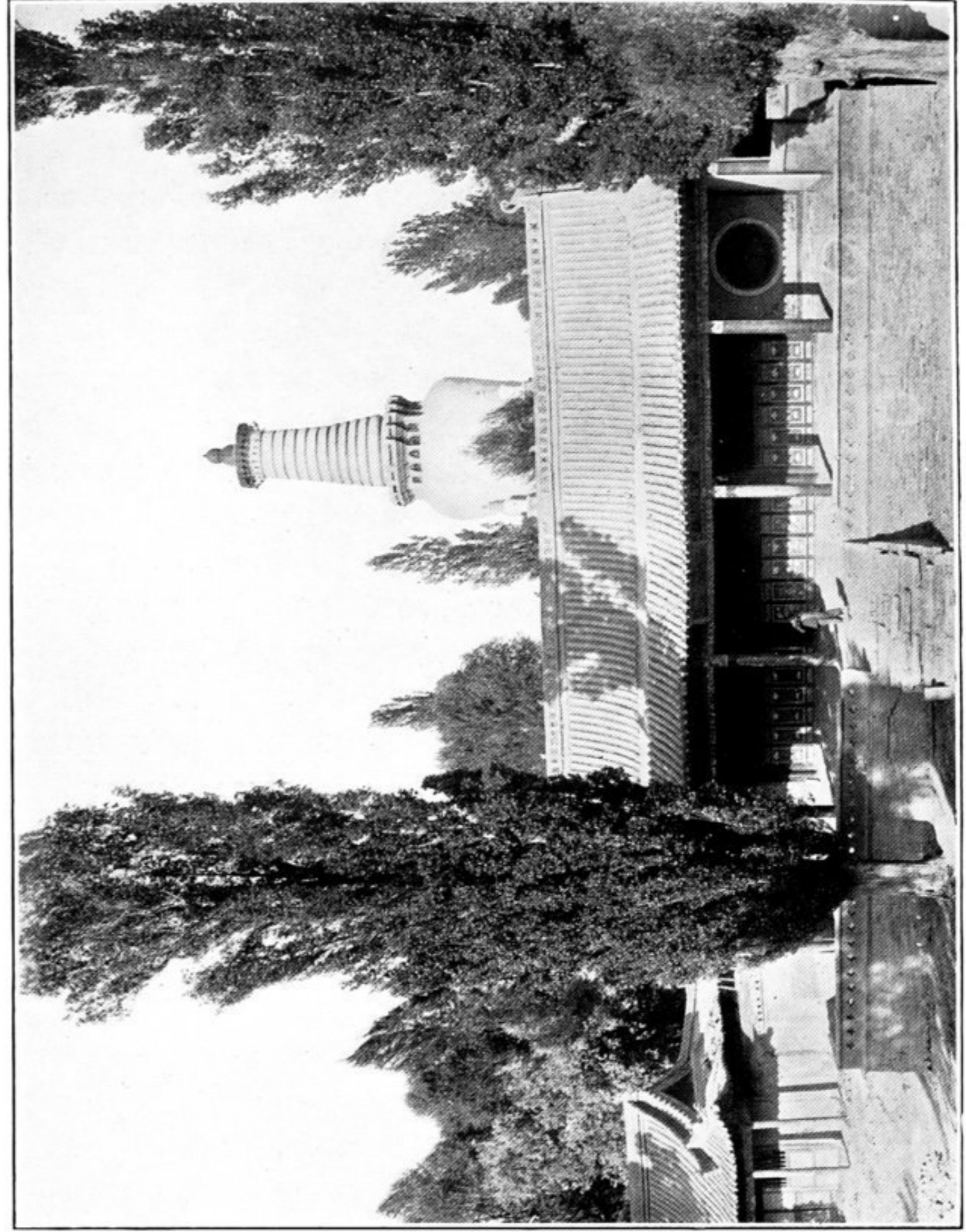
265. STREET IN NAN-KOU-CH'ENG.



266. VILLAGE SHRINES AT NAN-KOU-TAI-TZÜ



267. TEMPLE QUARTERS OUTSIDE CITY WALL OF KAN-CHOU.



268. STÜPA AND TEMPLE BEHIND SHRINE OF THE 'GREAT BUDDHAS', KAN-CHOU